

Product datasheet for **TA351202**

FXR1 Rabbit Polyclonal Antibody

Product data:

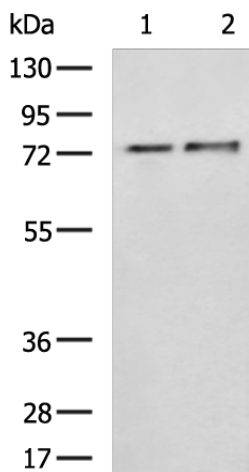
Product Type:	Primary Antibodies
Applications:	IHC, WB
Recommended Dilution:	WB: 200-1000 WB positive control: A431 and U251 cell lysates IHC: 50-200 Positive control: Human liver cancer Predicted cell location: Cytoplasm
Reactivity:	Human, Mouse, Rat
Host:	Rabbit
Isotype:	IgG
Clonality:	Polyclonal
Immunogen:	Synthetic peptide of human FXR1
Formulation:	pH7.4 PBS, 0.05% NaN ₃ , 40% Glycerol
Concentration:	lot specific
Purification:	Antigen affinity purification
Conjugation:	Unconjugated
Storage:	Store at -20°C as received.
Stability:	Stable for 12 months from date of receipt.
Predicted Protein Size:	70 kDa
Gene Name:	FMR1 autosomal homolog 1
Database Link:	NP_005078 Entrez Gene 14359 Mouse Entrez Gene 361927 Rat Entrez Gene 8087 Human P51114
Background:	The protein encoded by this gene is an RNA binding protein that interacts with the functionally-similar proteins FMR1 and FXR2. These proteins shuttle between the nucleus and cytoplasm and associate with polyribosomes, predominantly with the 60S ribosomal subunit. Three transcript variants encoding different isoforms have been found for this gene
Synonyms:	FXR1P



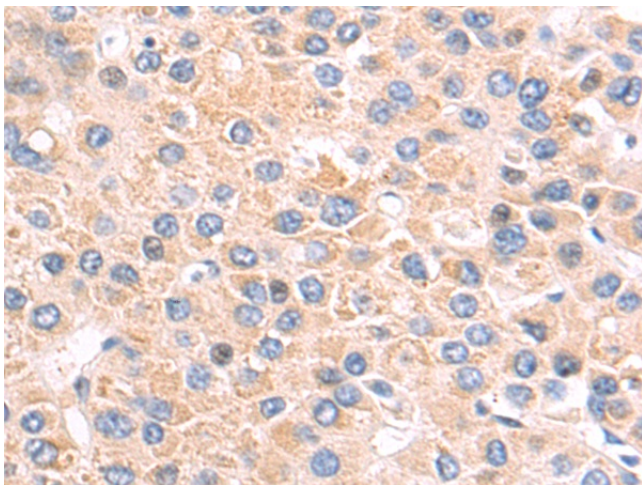
[View online »](#)

Protein Families: Druggable Genome

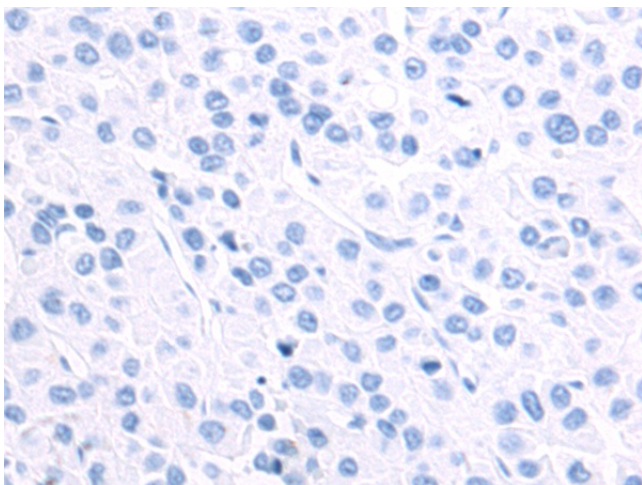
Product images:



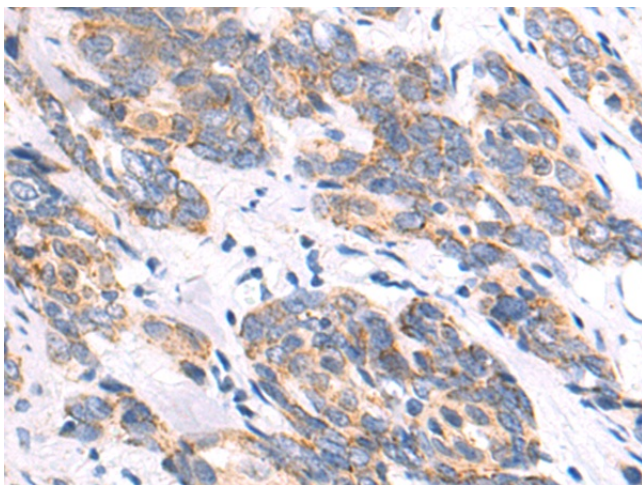
Gel: 8%SDS-PAGE
Lysate: 40 μ g
Lane 1-2: A431 and U251 cell lysates
Primary antibody: TA351202 (FXR1 Antibody) at dilution 1/200
Secondary antibody: Goat anti rabbit IgG at 1/5000 dilution
Exposure time: 3 minutes



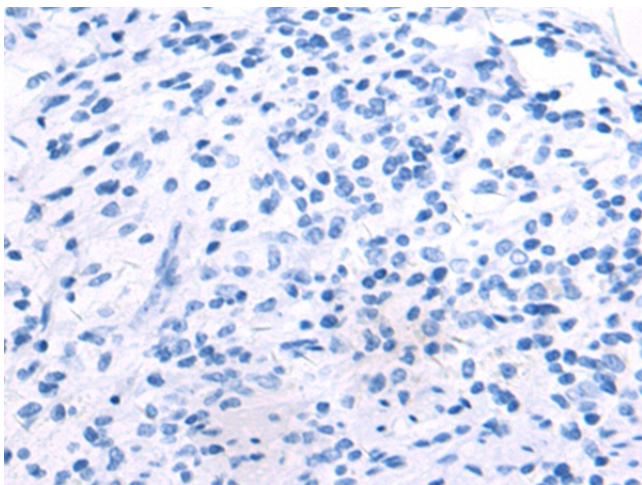
Immunohistochemistry of paraffin-embedded Human liver cancer tissue using TA351202 (FXR1 Antibody) at dilution 1/50 (Original magnification: \times 200)



Immunohistochemistry of paraffin-embedded Human liver cancer tissue using TA351202 (FXR1 Antibody) at dilution 1/50, treated with synthetic peptide. (Original magnification: $\times 200$)



Immunohistochemistry of paraffin-embedded Human cervical cancer tissue using TA351202 (FXR1 Antibody) at dilution 1/50 (Original magnification: $\times 200$)



Immunohistochemistry of paraffin-embedded Human cervical cancer tissue using TA351202 (FXR1 Antibody) at dilution 1/50, treated with synthetic peptide. (Original magnification: $\times 200$)