

Product datasheet for **TA351200**

Galactoside 2 alpha L fucosyltransferase 1 (FUT1) Rabbit Polyclonal Antibody

Product data:

Product Type:	Primary Antibodies
Applications:	IHC, WB
Recommended Dilution:	WB: 500-2000 WB positive control: Raji cell lysate IHC: 50-100 Positive control: Human cervical cancer Predicted cell location: Cytoplasm
Reactivity:	Human
Host:	Rabbit
Isotype:	IgG
Clonality:	Polyclonal
Immunogen:	Synthetic peptide of human FUT1
Formulation:	pH7.4 PBS, 0.05% NaN ₃ , 40% Glycerol
Concentration:	lot specific
Purification:	Antigen affinity purification
Conjugation:	Unconjugated
Storage:	Store at -20°C as received.
Stability:	Stable for 12 months from date of receipt.
Predicted Protein Size:	41 kDa
Gene Name:	fucosyltransferase 1 (H blood group)
Database Link:	NP_000139 Entrez Gene 2523 Human P19526
Background:	The protein encoded by this gene is a Golgi stack membrane protein that is involved in the creation of a precursor of the H antigen, which is required for the final step in the soluble A and B antigen synthesis pathway. This gene is one of two encoding the galactoside 2-L-fucosyltransferase enzyme. Mutations in this gene are a cause of the H-Bombay blood group.
Synonyms:	H; HH; HSC

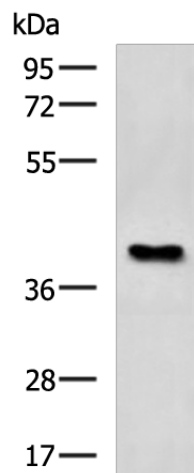


[View online »](#)

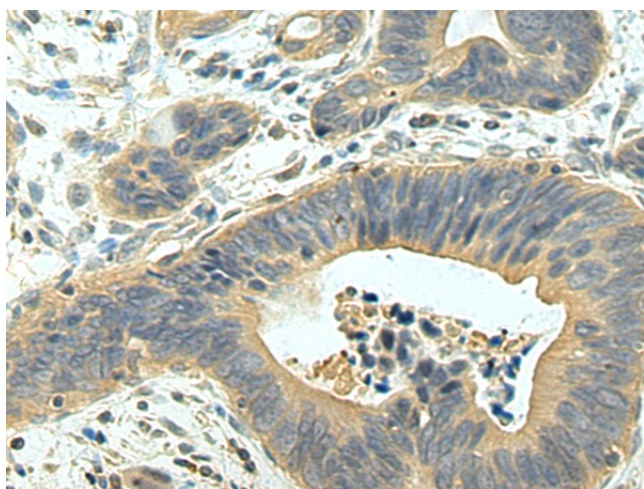
Protein Families: Druggable Genome, Transmembrane

Protein Pathways: Glycosphingolipid biosynthesis - globo series, Glycosphingolipid biosynthesis - lacto and neolacto series, Metabolic pathways

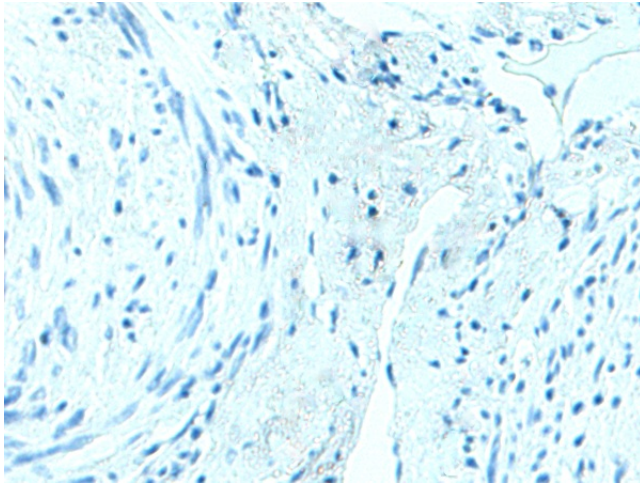
Product images:



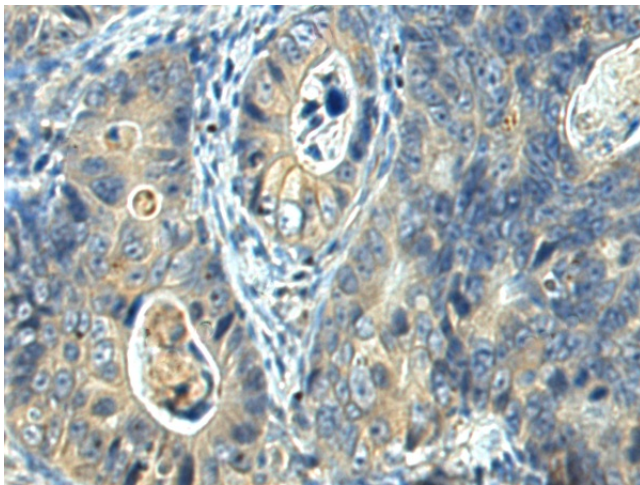
Gel: 8%SDS-PAGE
Lysate: 40 μ g
Lane: Raji cell lysate
Primary antibody: TA351200 (FUT1 Antibody) at dilution 1/800
Secondary antibody: Goat anti rabbit IgG at 1/5000 dilution
Exposure time: 1 minute



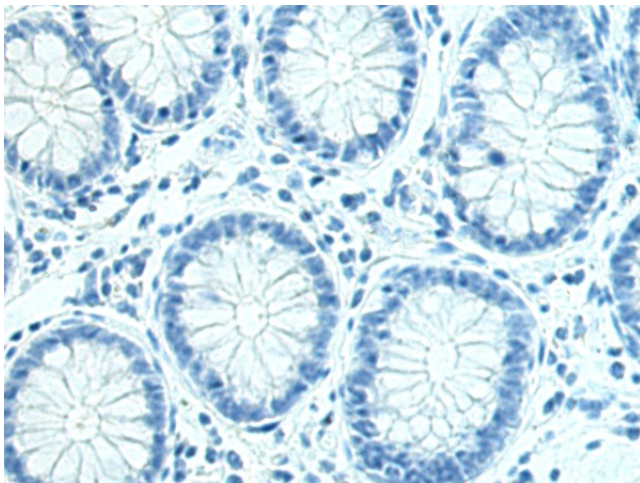
Immunohistochemistry of paraffin-embedded Human cervical cancer tissue using TA351200 (FUT1 Antibody) at dilution 1/35 (Original magnification: \times 200)



Immunohistochemistry of paraffin-embedded Human cervical cancer tissue using TA351200 (FUT1 Antibody) at dilution 1/35, treated with synthetic peptide. (Original magnification: x200)



Immunohistochemistry of paraffin-embedded Human colorectal cancer tissue using TA351200 (FUT1 Antibody) at dilution 1/35 (Original magnification: x200)



Immunohistochemistry of paraffin-embedded Human colorectal cancer tissue using TA351200 (FUT1 Antibody) at dilution 1/35, treated with synthetic peptide. (Original magnification: x200)