

Product datasheet for **TA351196**

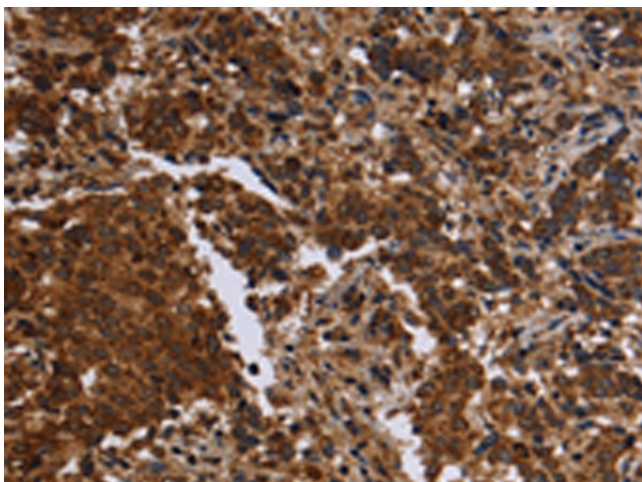
FMN2 Rabbit Polyclonal Antibody

Product data:

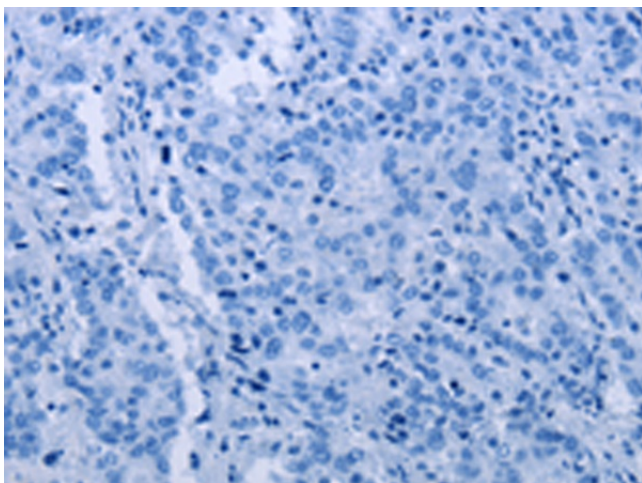
Product Type:	Primary Antibodies
Applications:	IHC
Recommended Dilution:	IHC: 50-200 Positive control: Human liver cancer Predicted cell location: Cytoplasm
Reactivity:	Human
Host:	Rabbit
Isotype:	IgG
Clonality:	Polyclonal
Immunogen:	Synthetic peptide of human FMN2
Formulation:	pH7.4 PBS, 0.05% NaN ₃ , 40% Glycerol
Concentration:	lot specific
Purification:	Antigen affinity purification
Conjugation:	Unconjugated
Storage:	Store at -20°C as received.
Stability:	Stable for 12 months from date of receipt.
Gene Name:	formin 2
Database Link:	NP_064450 Entrez Gene 56776 Human Q9NZ56
Background:	Formin homology (FH) domain proteins (see FMN1; MIM 136535) play a role in cytoskeletal organization and/or establishment of cell polarity.
Synonyms:	formin 2; formin 2-like; OTTHUMP00000037814
Protein Pathways:	Dorso-ventral axis formation



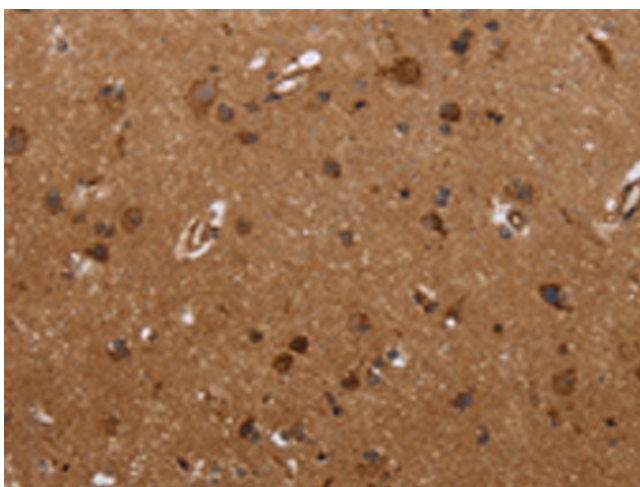
[View online »](#)

Product images:

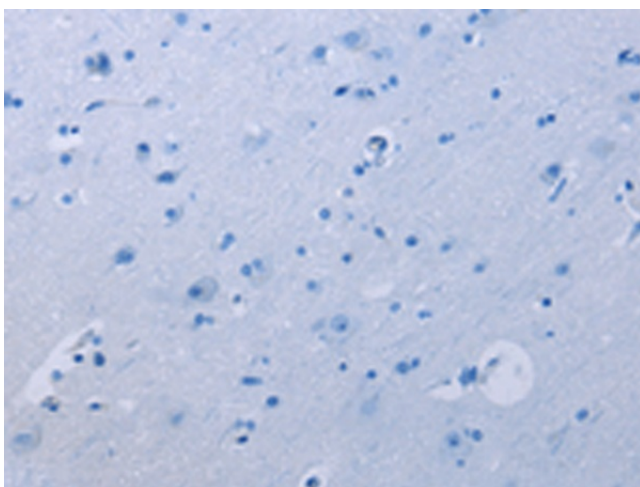
Immunohistochemistry of paraffin-embedded Human liver cancer tissue using TA351196 (FMN2 Antibody) at dilution 1/30 (Original magnification: $\times 200$)



Immunohistochemistry of paraffin-embedded Human liver cancer tissue using TA351196 (FMN2 Antibody) at dilution 1/30, treated with synthetic peptide. (Original magnification: $\times 200$)



Immunohistochemistry of paraffin-embedded Human brain tissue using TA351196 (FMN2 Antibody) at dilution 1/30 (Original magnification: ×200)



Immunohistochemistry of paraffin-embedded Human brain tissue using TA351196 (FMN2 Antibody) at dilution 1/30, treated with synthetic peptide. (Original magnification: ×200)