

## Product datasheet for **TA351195S**

### FLIP (CFLAR) Rabbit Polyclonal Antibody

#### Product data:

Product Type:	Primary Antibodies
Applications:	IHC, WB
Recommended Dilution:	WB: 500-2000 WB positive control: Mouse thymus tissue IHC: 25-100 Positive control: Human colon cancer Predicted cell location: Nucleus
Reactivity:	Human, Mouse
Host:	Rabbit
Isotype:	IgG
Clonality:	Polyclonal
Immunogen:	Synthetic peptide of human CFLAR
Formulation:	pH7.4 PBS, 0.05% NaN <sub>3</sub> , 40% Glycerol
Purification:	Antigen affinity purification
Conjugation:	Unconjugated
Storage:	Store at -20°C as received.
Stability:	Stable for 12 months from date of receipt.
Predicted Protein Size:	55 kDa
Gene Name:	CASP8 and FADD like apoptosis regulator
Database Link:	<a href="#">NP_003870</a> <a href="#">Entrez Gene 12633 Mouse</a> <a href="#">Entrez Gene 8837 Human</a> <a href="#">O15519</a>
Background:	The protein encoded by this gene is a regulator of apoptosis and is structurally similar to caspase-8. However, the encoded protein lacks caspase activity and appears to be itself cleaved into two peptides by caspase-8. Several transcript variants encoding different isoforms have been found for this gene, and partial evidence for several more variants exists.
Synonyms:	c-FLIP; c-FLIPL; c-FLIPR; c-FLIPS; CASH; CASP8AP1; Casper; CLARP; FLAME; FLAME-1; FLAME1; FLIP

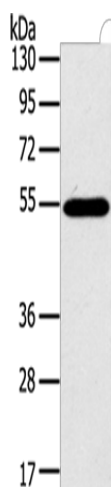


[View online »](#)

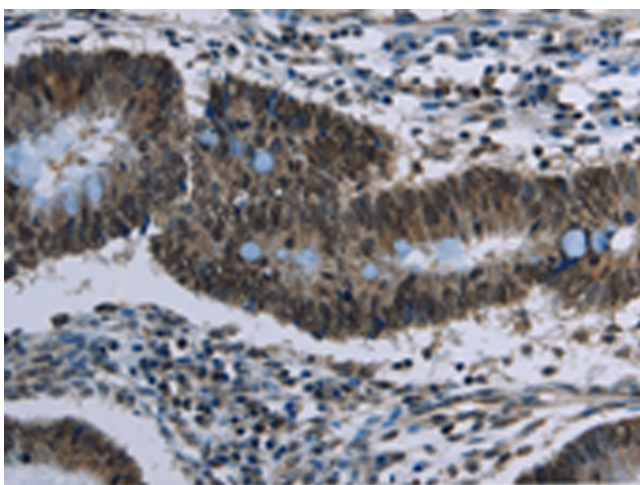
Protein Families: Druggable Genome, Protease

Protein Pathways: Apoptosis

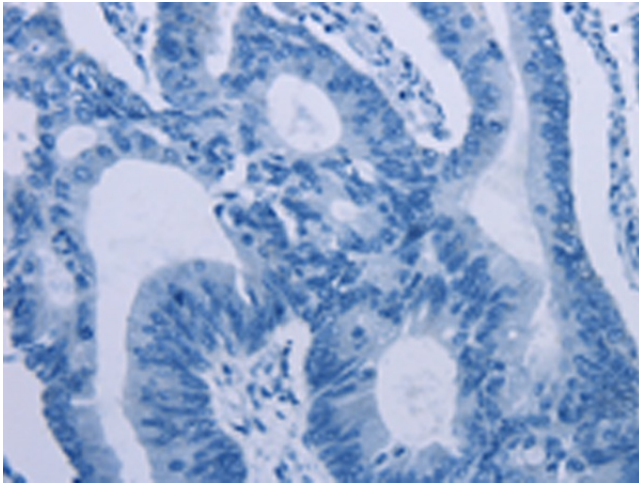
### Product images:



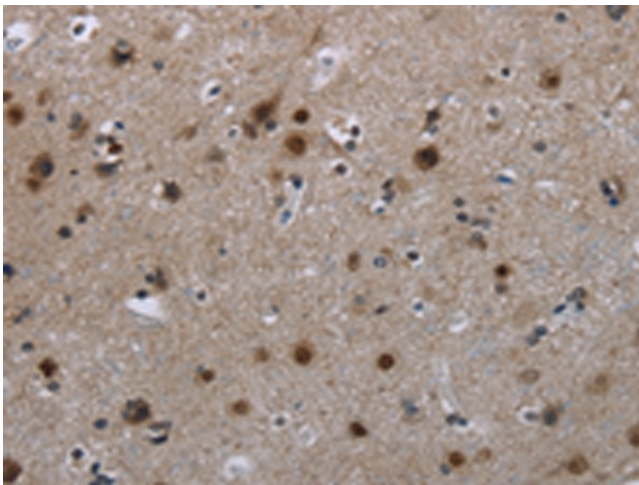
Gel: 8%SDS-PAGE  
Lysate: 40 µg  
Lane: Mouse thymus tissue  
Primary antibody: [TA351195] (CFLAR Antibody)  
at dilution 1/200  
Secondary antibody: Goat anti rabbit IgG at  
1/8000 dilution  
Exposure time: 1 minute



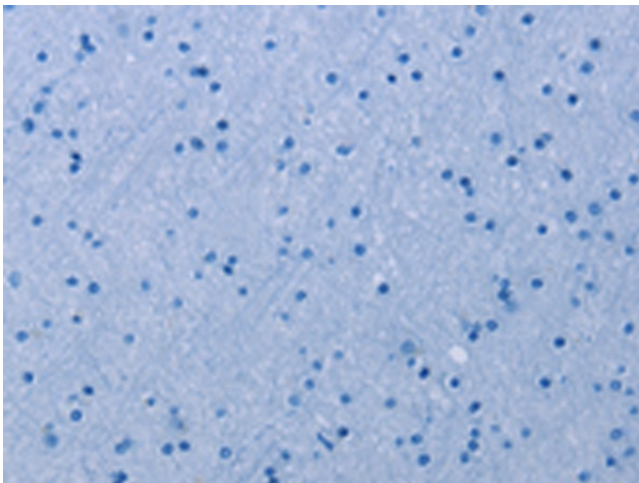
Immunohistochemistry of paraffin-embedded  
Human colon cancer tissue using [TA351195]  
(CFLAR Antibody) at dilution 1/20 (Original  
magnification: ×200)



Immunohistochemistry of paraffin-embedded Human colon cancer tissue using [TA351195] (CFLAR Antibody) at dilution 1/20, treated with synthetic peptide. (Original magnification: ×200)



Immunohistochemistry of paraffin-embedded Human brain tissue using [TA351195] (CFLAR Antibody) at dilution 1/20 (Original magnification: ×200)



Immunohistochemistry of paraffin-embedded Human brain tissue using [TA351195] (CFLAR Antibody) at dilution 1/20, treated with synthetic peptide. (Original magnification: ×200)