

## Product datasheet for **TA351186**

### FEM1A Rabbit Polyclonal Antibody

#### Product data:

Product Type:	Primary Antibodies
Applications:	IHC
Recommended Dilution:	IHC: 25-100 Positive control: Human thyroid cancer Predicted cell location: Cytoplasm
Reactivity:	Human
Host:	Rabbit
Isotype:	IgG
Clonality:	Polyclonal
Immunogen:	Synthetic peptide of human FEM1A
Formulation:	pH7.4 PBS, 0.05% NaN <sub>3</sub> , 40% Glycerol
Concentration:	lot specific
Purification:	Antigen affinity purification
Conjugation:	Unconjugated
Storage:	Store at -20°C as received.
Stability:	Stable for 12 months from date of receipt.
Gene Name:	fem-1 homolog A
Database Link:	<a href="#">NP_061178</a> <a href="#">Entrez Gene 55527 Human</a> <a href="#">Q9BSK4</a>

**Background:** FEM1A (FEM-1 homolog a), also known as EPRAP (Prostaglandin E receptor 4-associated protein), is a 669 amino acid cytoplasmic protein that belongs to the FEM-1 family. FEM1A is present in atheromata and in macrophages derived from peripheral blood monocytes. FEM1A may be a component of an E3 ubiquitin-protein ligase complex and functions as a substrate recognition subunit. It is suggested that FEM1A participates in anti-inflammatory signaling of macrophages via its interaction with EP4. FEM1A is down-regulated in Rhabdomyosarcoma, the most common soft tissue neoplasm of children. FEM1A is considered a candidate gene for polycystic ovary syndrome.

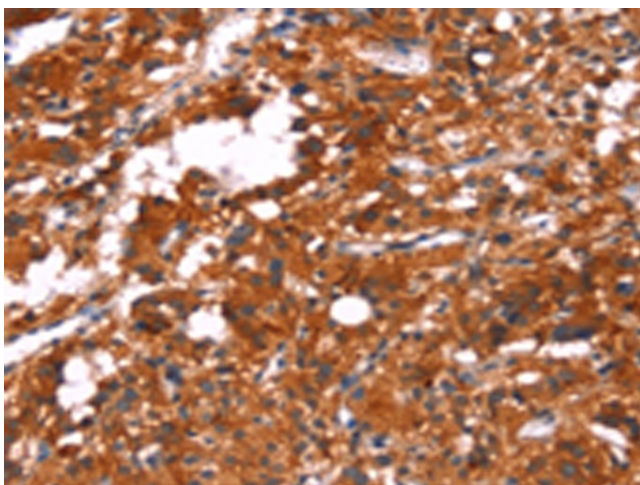


[View online »](#)

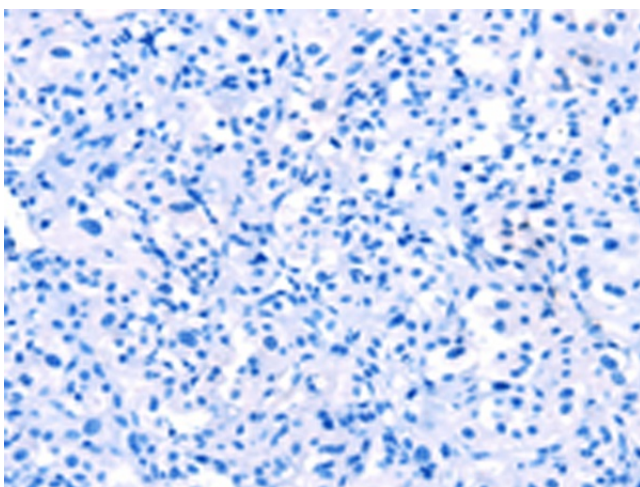
Synonyms: EPRAP

Protein Families: Druggable Genome

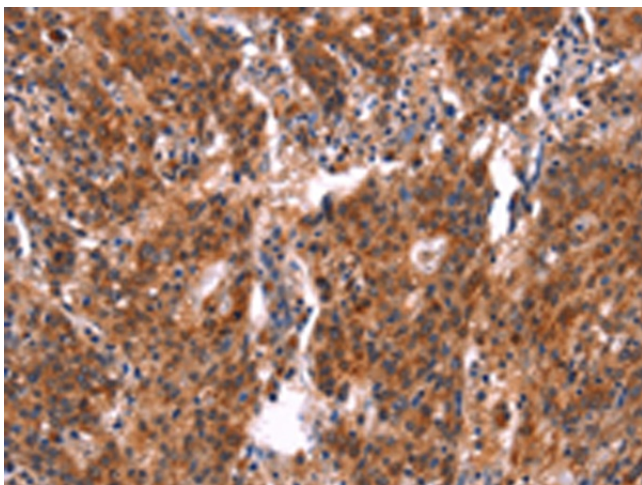
### Product images:



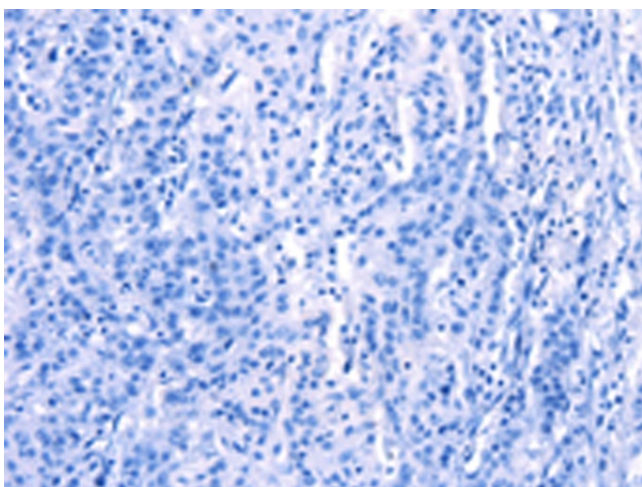
Immunohistochemistry of paraffin-embedded Human thyroid cancer tissue using TA351186 (FEM1A Antibody) at dilution 1/20 (Original magnification:  $\times 200$ )



Immunohistochemistry of paraffin-embedded Human thyroid cancer tissue using TA351186 (FEM1A Antibody) at dilution 1/20, treated with synthetic peptide. (Original magnification:  $\times 200$ )



Immunohistochemistry of paraffin-embedded Human gastric cancer tissue using TA351186 (FEM1A Antibody) at dilution 1/20 (Original magnification:  $\times 200$ )



Immunohistochemistry of paraffin-embedded Human gastric cancer tissue using TA351186 (FEM1A Antibody) at dilution 1/20, treated with synthetic peptide. (Original magnification:  $\times 200$ )