

Product datasheet for **TA351185S**

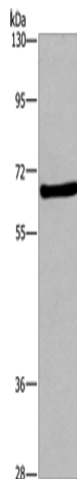
FEM 1B (FEM1B) Rabbit Polyclonal Antibody

Product data:

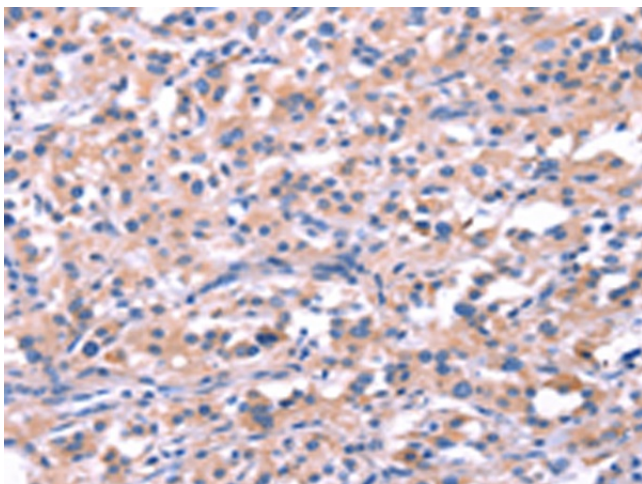
Product Type:	Primary Antibodies
Applications:	IHC, WB
Recommended Dilution:	WB: 500-2000 WB positive control: PC3 IHC: 25-100 Positive control: Human thyroid cancer Predicted cell location: Cytoplasm
Reactivity:	Human, Mouse, Rat
Host:	Rabbit
Isotype:	IgG
Clonality:	Polyclonal
Immunogen:	Synthetic peptide of human FEM1B
Formulation:	pH7.4 PBS, 0.05% NaN ₃ , 40% Glycerol
Purification:	Antigen affinity purification
Conjugation:	Unconjugated
Storage:	Store at -20°C as received.
Stability:	Stable for 12 months from date of receipt.
Predicted Protein Size:	70 kDa
Gene Name:	fem-1 homolog B
Database Link:	NP_056137 Entrez Gene 14155 Mouse Entrez Gene 315745 Rat Entrez Gene 10116 Human Q9UK73
Background:	This gene encodes an ankyrin repeat protein that belongs to the death receptor-associated family of proteins and plays a role in mediating apoptosis. The encoded protein is also thought to function in the replication stress-induced checkpoint signaling pathway via interaction with checkpoint kinase 1
Synonyms:	F1A-ALPHA; F1AA; FEM1-beta
Protein Families:	Druggable Genome


[View online »](#)

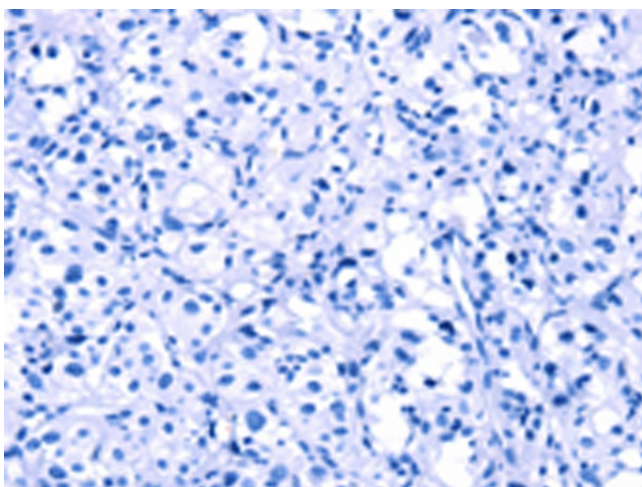
Product images:



Gel: 6%SDS-PAGE
 Lysate: 40 µg
 Lane: PC3 cells
 Primary antibody: [TA351185] (FEM1B Antibody)
 at dilution 1/200
 Secondary antibody: Goat anti rabbit IgG at
 1/8000 dilution
 Exposure time: 10 seconds



Immunohistochemistry of paraffin-embedded
 Human thyroid cancer tissue using [TA351185]
 (FEM1B Antibody) at dilution 1/20 (Original
 magnification: ×200)



Immunohistochemistry of paraffin-embedded Human thyroid cancer tissue using [TA351185] (FEM1B Antibody) at dilution 1/20, treated with synthetic peptide. (Original magnification: ×200)