

Product datasheet for **TA351178**

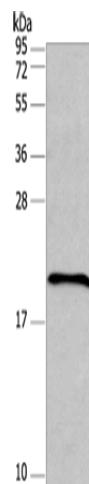
FAIM1 (FAIM) Rabbit Polyclonal Antibody

Product data:

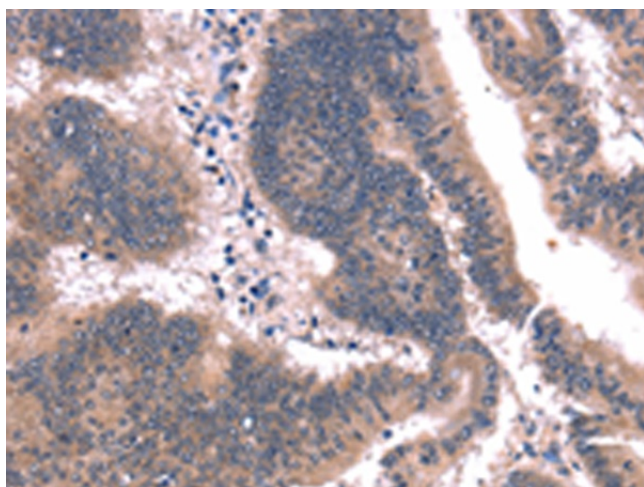
Product Type:	Primary Antibodies
Applications:	IHC, WB
Recommended Dilution:	WB: 200-1000 WB positive control: Raji cells IHC: 25-100 Positive control: Human colon cancer Predicted cell location: Cytoplasm and Nucleus
Reactivity:	Human, Mouse, Rat
Host:	Rabbit
Isotype:	IgG
Clonality:	Polyclonal
Immunogen:	Synthetic peptide of human FAIM
Formulation:	pH7.4 PBS, 0.05% NaN ₃ , 40% Glycerol
Concentration:	lot specific
Purification:	Antigen affinity purification
Conjugation:	Unconjugated
Storage:	Store at -20°C as received.
Stability:	Stable for 12 months from date of receipt.
Predicted Protein Size:	20 kDa
Gene Name:	Fas apoptotic inhibitory molecule
Database Link:	NP_060617 Entrez Gene 23873 Mouse Entrez Gene 140930 Rat Entrez Gene 55179 Human Q9NVQ4
Background:	The protein encoded by this gene protects against death receptor-triggered apoptosis and regulates B-cell signaling and differentiation. Several transcript variants encoding different isoforms have been found for this gene
Synonyms:	FAIM1



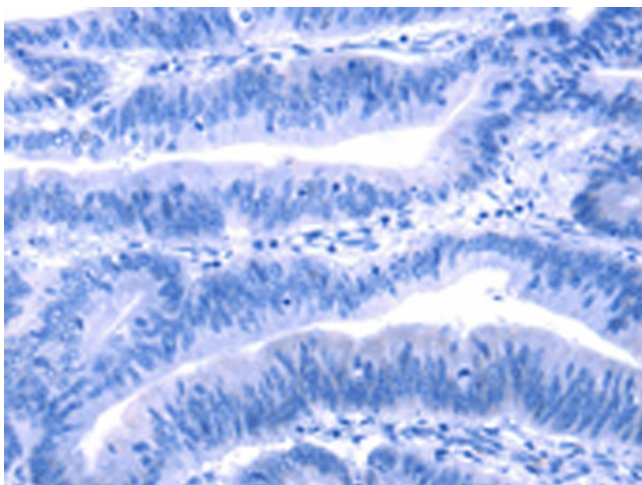
[View online »](#)

Product images:

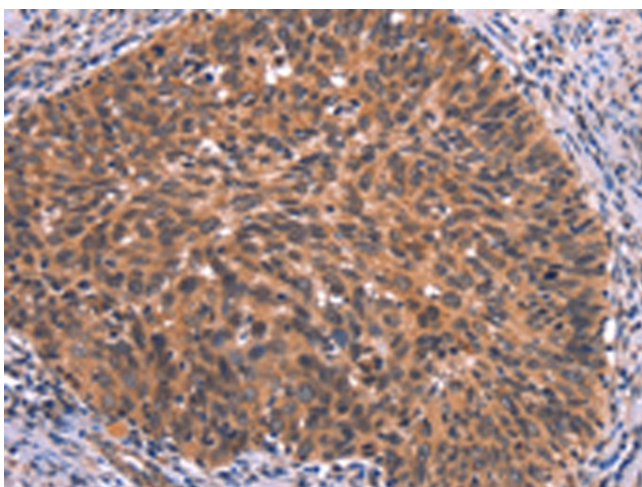
Gel: 10%SDS-PAGE
Lysate: 40 µg
Lane: Raji cells
Primary antibody: TA351178 (FAIM Antibody) at dilution 1/200
Secondary antibody: Goat anti rabbit IgG at 1/8000 dilution
Exposure time: 15 seconds



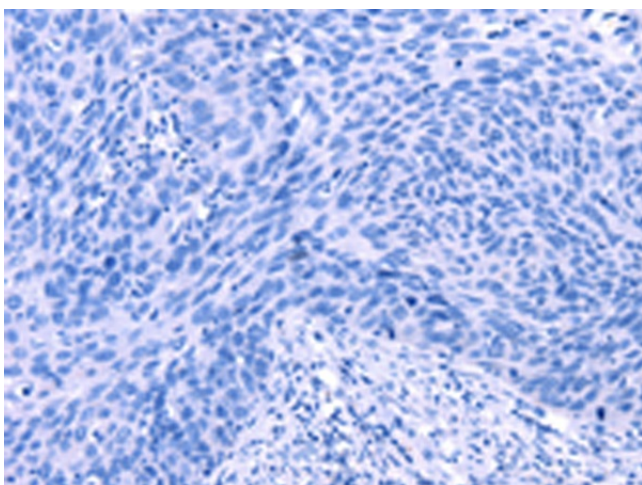
Immunohistochemistry of paraffin-embedded Human colon cancer tissue using TA351178 (FAIM Antibody) at dilution 1/25 (Original magnification: ×200)



Immunohistochemistry of paraffin-embedded Human colon cancer tissue using TA351178 (FAIM Antibody) at dilution 1/25, treated with synthetic peptide. (Original magnification: $\times 200$)



Immunohistochemistry of paraffin-embedded Human cervical cancer tissue using TA351178 (FAIM Antibody) at dilution 1/25 (Original magnification: $\times 200$)



Immunohistochemistry of paraffin-embedded Human cervical cancer tissue using TA351178 (FAIM Antibody) at dilution 1/25, treated with synthetic peptide. (Original magnification: $\times 200$)