

Product datasheet for **TA351171**

ETS1 associated protein II (TDP2) Rabbit Polyclonal Antibody

Product data:

Product Type:	Primary Antibodies
Applications:	IHC, WB
Recommended Dilution:	WB: 500-2000 WB positive control: Mouse small intestines tissue lysate IHC: 50-300 Positive control: Human cervical cancer Predicted cell location: Cytoplasm and Nucleus
Reactivity:	Human, Mouse
Host:	Rabbit
Isotype:	IgG
Clonality:	Polyclonal
Immunogen:	Synthetic peptide of human TDP2
Formulation:	pH7.4 PBS, 0.05% NaN ₃ , 40% Glycerol
Concentration:	lot specific
Purification:	Antigen affinity purification
Conjugation:	Unconjugated
Storage:	Store at -20°C as received.
Stability:	Stable for 12 months from date of receipt.
Predicted Protein Size:	41 kDa
Gene Name:	tyrosyl-DNA phosphodiesterase 2
Database Link:	NP_057698 Entrez Gene 56196 Mouse Entrez Gene 51567 Human O95551

Background: This gene encodes a member of a superfamily of divalent cation-dependent phosphodiesterases. The encoded protein associates with CD40, tumor necrosis factor (TNF) receptor-75 and TNF receptor associated factors (TRAFs), and inhibits nuclear factor-kappa-B activation. This protein has sequence and structural similarities with APE1 endonuclease, which is involved in both DNA repair and the activation of transcription factors.

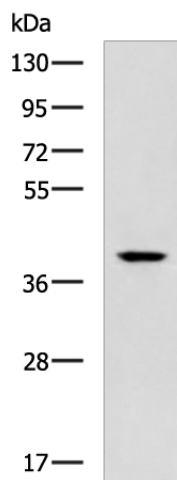


[View online »](#)

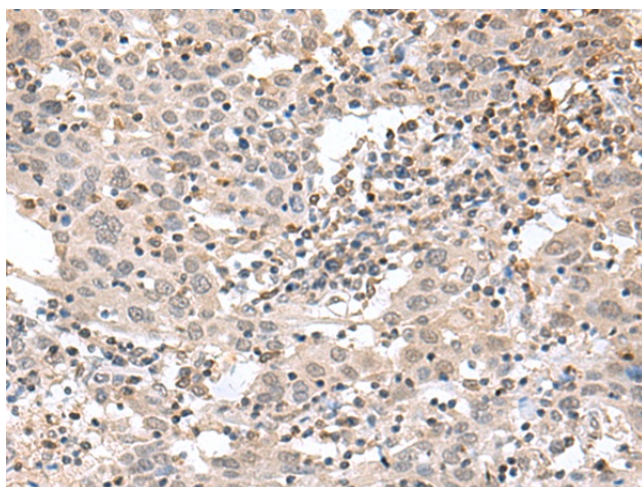
Synonyms: AD022; dj30M3.3; EAP2; EAPII; hTDP2; TTRAP

Protein Families: Druggable Genome, Stem cell - Pluripotency, Transcription Factors

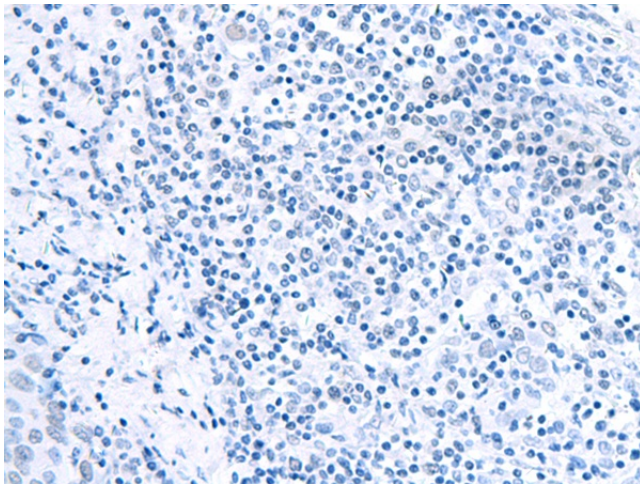
Product images:



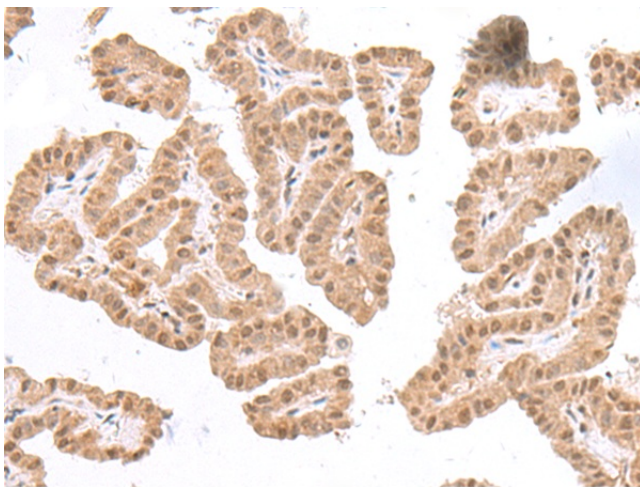
Gel: 8%SDS-PAGE
Lysate: 40 μ g
Lane: Mouse small intestines tissue lysate
Primary antibody: TA351171 (TDP2 Antibody) at dilution 1/600
Secondary antibody: Goat anti rabbit IgG at 1/5000 dilution
Exposure time: 90 seconds



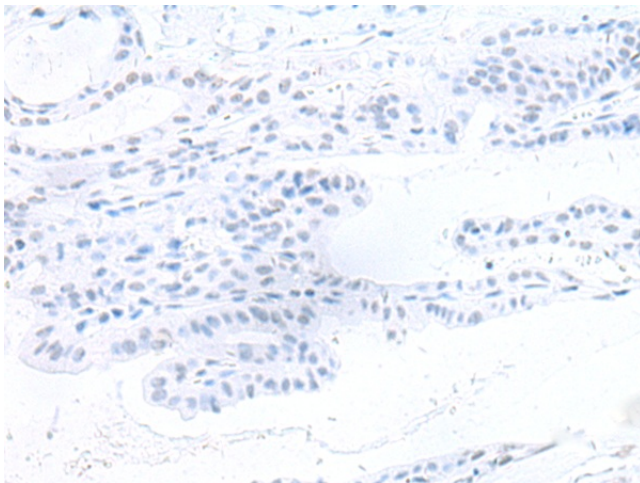
Immunohistochemistry of paraffin-embedded Human cervical cancer tissue using TA351171 (TDP2 Antibody) at dilution 1/75 (Original magnification: \times 200)



Immunohistochemistry of paraffin-embedded Human cervical cancer tissue using TA351171 (TDP2 Antibody) at dilution 1/75, treated with synthetic peptide. (Original magnification: x200)



Immunohistochemistry of paraffin-embedded Human thyroid cancer tissue using TA351171 (TDP2 Antibody) at dilution 1/75 (Original magnification: x200)



Immunohistochemistry of paraffin-embedded Human thyroid cancer tissue using TA351171 (TDP2 Antibody) at dilution 1/75, treated with synthetic peptide. (Original magnification: x200)