

Product datasheet for **TA351169**

Separase (ESPL1) Rabbit Polyclonal Antibody

Product data:

Product Type:	Primary Antibodies
Applications:	IHC, WB
Recommended Dilution:	WB: 200-1000 WB positive control: Raji cells IHC: 25-100 Positive control: Human thyroid cancer Predicted cell location: Cytoplasm
Reactivity:	Human, Mouse
Host:	Rabbit
Isotype:	IgG
Clonality:	Polyclonal
Immunogen:	Synthetic peptide of human ESPL1
Formulation:	pH7.4 PBS, 0.05% NaN ₃ , 40% Glycerol
Concentration:	lot specific
Purification:	Antigen affinity purification
Conjugation:	Unconjugated
Storage:	Store at -20°C as received.
Stability:	Stable for 12 months from date of receipt.
Predicted Protein Size:	233 kDa
Gene Name:	extra spindle pole bodies like 1, separase
Database Link:	NP_036423 Entrez Gene 105988 Mouse Entrez Gene 9700 Human Q14674



[View online »](#)

Background:

Stable cohesion between sister chromatids before anaphase and their timely separation during anaphase are critical for chromosome inheritance. In vertebrates, sister chromatid cohesion is released in 2 steps via distinct mechanisms. The first step involves phosphorylation of STAG1 or STAG2 in the cohesin complex. The second step involves cleavage of the cohesin subunit SCC1 by ESPL1, or separase, which initiates the final separation of sister chromatids.

Synonyms:

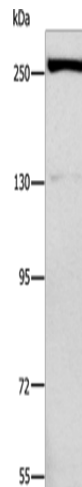
ESP1; SEPA

Protein Families:

Druggable Genome, Protease

Protein Pathways:

Cell cycle, Oocyte meiosis

Product images:

Gel: 6%SDS-PAGE

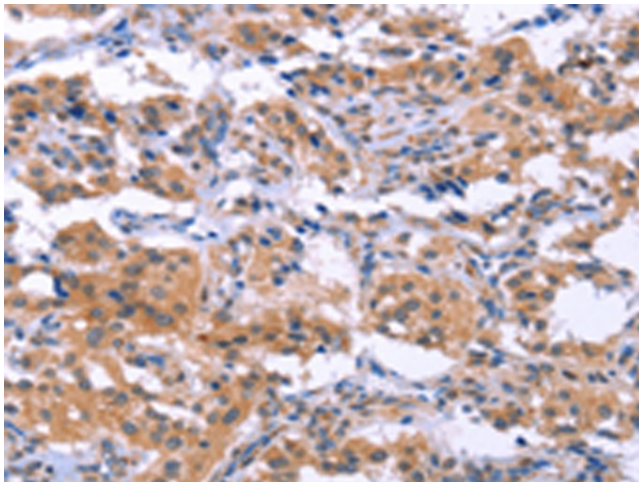
Lysate: 40 µg

Lane: Raji cells

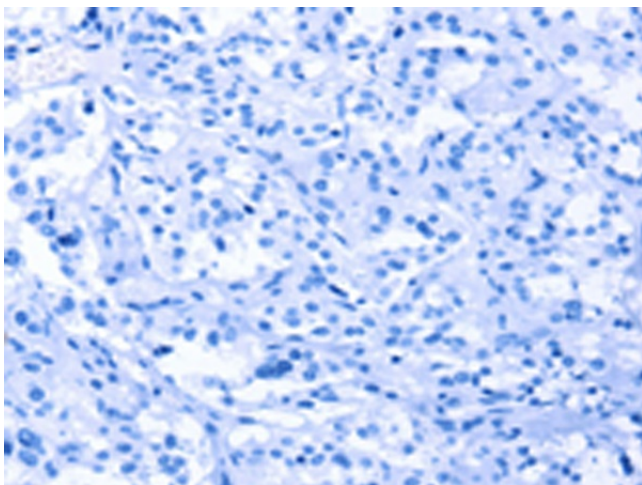
Primary antibody: TA351169 (ESPL1 Antibody) at dilution 1/500

Secondary antibody: Goat anti rabbit IgG at 1/8000 dilution

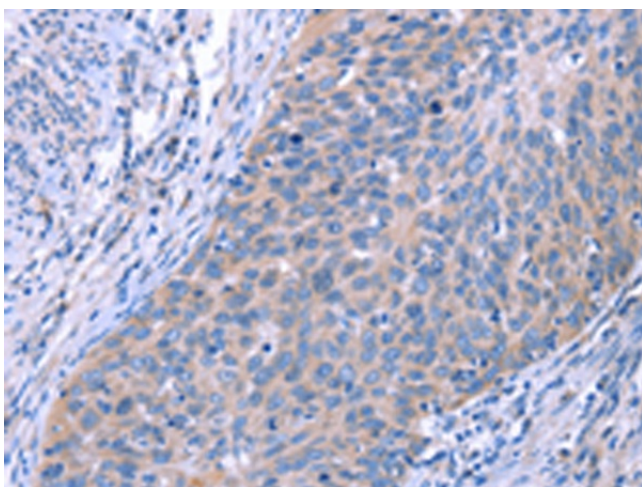
Exposure time: 1 second



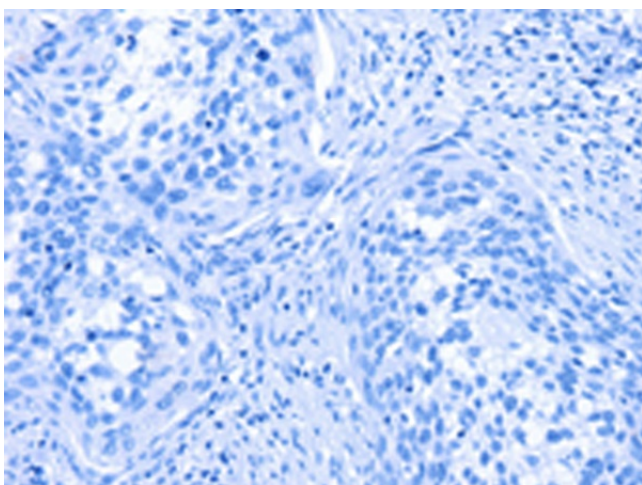
Immunohistochemistry of paraffin-embedded Human thyroid cancer tissue using TA351169 (ESPL1 Antibody) at dilution 1/40 (Original magnification: ×200)



Immunohistochemistry of paraffin-embedded Human thyroid cancer tissue using TA351169 (ESPL1 Antibody) at dilution 1/40, treated with synthetic peptide. (Original magnification: ×200)



Immunohistochemistry of paraffin-embedded Human cervical cancer tissue using TA351169 (ESPL1 Antibody) at dilution 1/40 (Original magnification: ×200)



Immunohistochemistry of paraffin-embedded Human cervical cancer tissue using TA351169 (ESPL1 Antibody) at dilution 1/40, treated with synthetic peptide. (Original magnification: ×200)