

## Product datasheet for **TA351166S**

### IRE1 (ERN2) Rabbit Polyclonal Antibody

#### Product data:

Product Type:	Primary Antibodies
Applications:	IHC
Recommended Dilution:	IHC: 50-200 Positive control: Human liver cancer Predicted cell location: Cytoplasm
Reactivity:	Human
Host:	Rabbit
Isotype:	IgG
Clonality:	Polyclonal
Immunogen:	Synthetic peptide of human ERN2
Formulation:	pH7.4 PBS, 0.05% NaN <sub>3</sub> , 40% Glycerol
Purification:	Antigen affinity purification
Conjugation:	Unconjugated
Storage:	Store at -20°C as received.
Stability:	Stable for 12 months from date of receipt.
Gene Name:	endoplasmic reticulum to nucleus signaling 2
Database Link:	<a href="#">NP_150296</a> <a href="#">Entrez Gene 10595 Human</a> <a href="#">Q76MJ5</a>

**Background:** The accumulation of unfolded proteins within the endoplasmic reticulum (ER) of yeast and mammalian cells activates the unfolded protein response (UPR) pathway and leads to the transcription of ER-specific genes involved in protein folding. The activation of the UPR requires the ER transmembrane kinase IRE1p (for inositol-requiring and ER-to-nucleus signaling protein). IRE1 $\alpha$  and IRE1 $\beta$  are two mammalian homologs of the yeast IRE1p. These related proteins localize to the ER lumen and contain both a short transmembrane domain that spans the ER membrane and a cytosolic Ser/Thr kinase domain. IRE1 activation involves the oligomerization and trans-phosphorylation of the cytosolic portion of the proteins, which then potentiates its intrinsic kinase activity and, in turn, stimulates transcription of UPR-targeted genes.

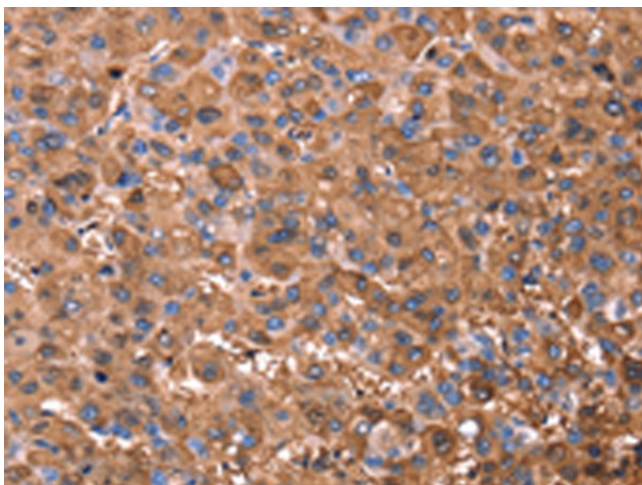


[View online »](#)

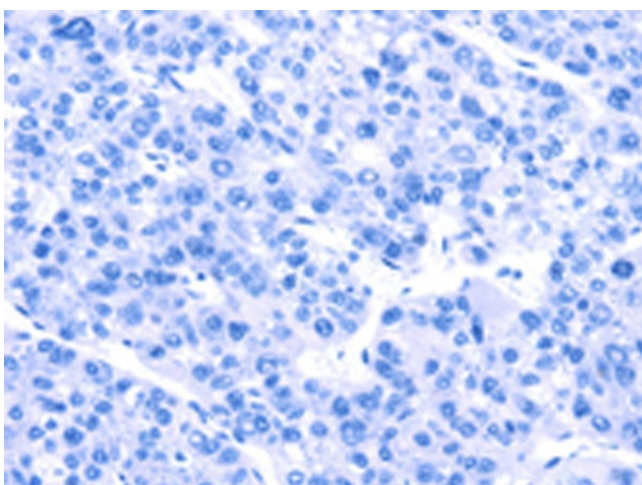
Synonyms: hIRE2p; IRE1-BETA; IRE1b; IRE2p

Protein Families: Druggable Genome, Protein Kinase

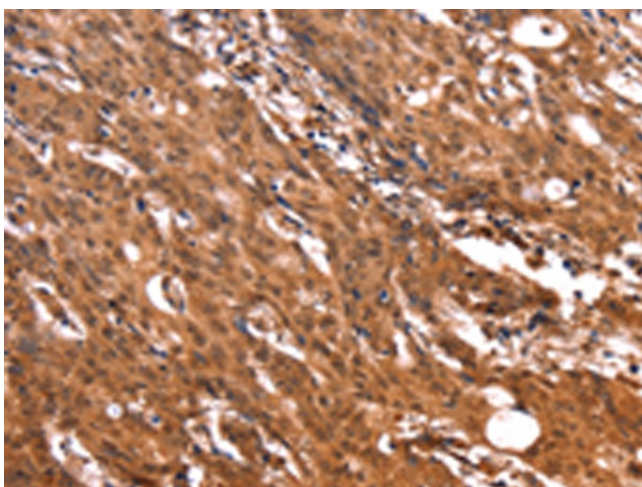
### Product images:



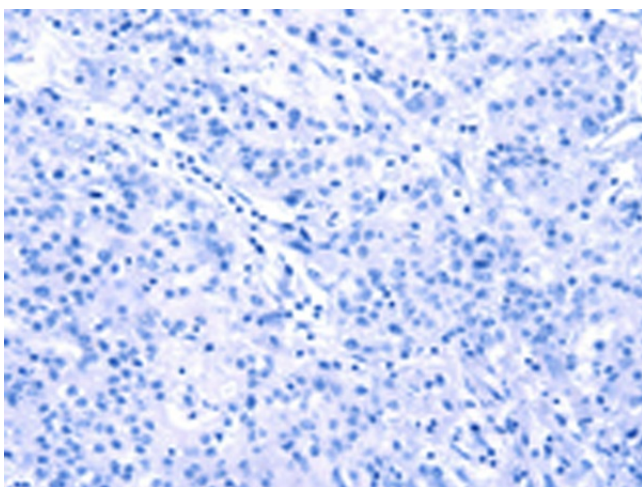
Immunohistochemistry of paraffin-embedded Human liver cancer tissue using [TA351166] (ERN2 Antibody) at dilution 1/40 (Original magnification:  $\times 200$ )



Immunohistochemistry of paraffin-embedded Human liver cancer tissue using [TA351166] (ERN2 Antibody) at dilution 1/40, treated with synthetic peptide. (Original magnification:  $\times 200$ )



Immunohistochemistry of paraffin-embedded Human gastric cancer tissue using [TA351166] (ERN2 Antibody) at dilution 1/40 (Original magnification:  $\times 200$ )



Immunohistochemistry of paraffin-embedded Human gastric cancer tissue using [TA351166] (ERN2 Antibody) at dilution 1/40, treated with synthetic peptide. (Original magnification:  $\times 200$ )