

Product datasheet for **TA351164S**

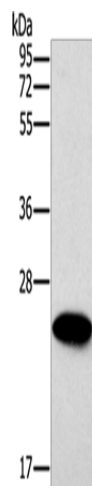
ERAS Rabbit Polyclonal Antibody

Product data:

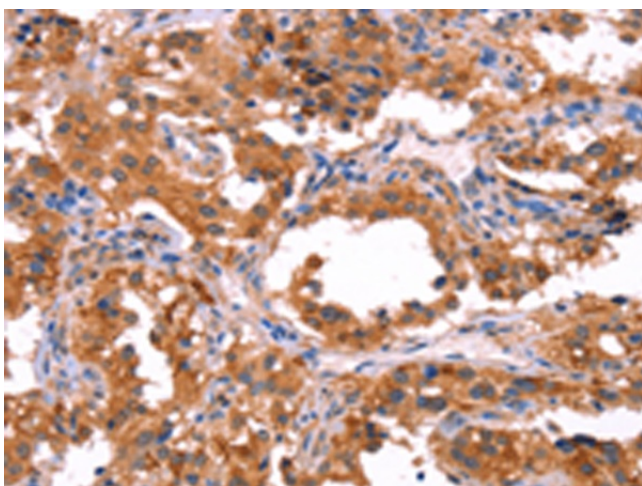
Product Type:	Primary Antibodies
Applications:	IHC, WB
Recommended Dilution:	WB: 500-2000 WB positive control: Mouse heart tissue IHC: 50-200 Positive control: Human thyroid cancer Predicted cell location: Cytoplasm
Reactivity:	Human, Mouse
Host:	Rabbit
Isotype:	IgG
Clonality:	Polyclonal
Immunogen:	Synthetic peptide of human ERAS
Formulation:	pH7.4 PBS, 0.05% NaN ₃ , 40% Glycerol
Purification:	Antigen affinity purification
Conjugation:	Unconjugated
Storage:	Store at -20°C as received.
Stability:	Stable for 12 months from date of receipt.
Predicted Protein Size:	25 kDa
Gene Name:	ES cell expressed Ras
Database Link:	NP_853510 Entrez Gene 353283 MouseEntrez Gene 3266 Human Q7Z444
Background:	This gene encodes a constitutively active member of the small GTPase Ras protein family. The encoded protein activates the phosphatidylinositol 3-kinase signal transduction pathway in undifferentiated stem cells, but is not expressed in differentiated cells. This gene may be involved in cancer and chemotherapy resistance.
Synonyms:	HRAS2; HRASP
Protein Families:	Druggable Genome



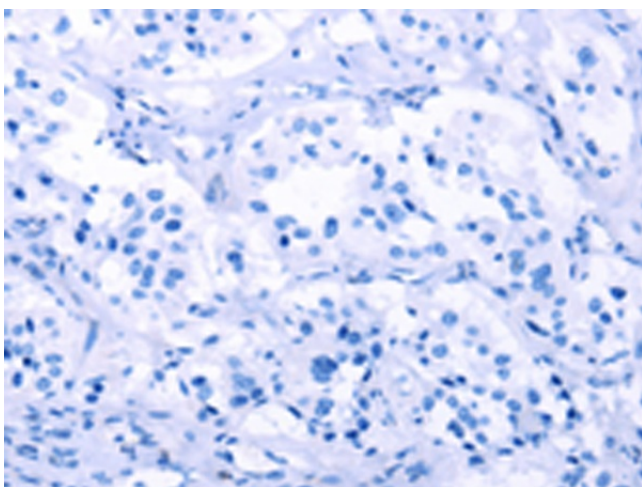
[View online »](#)

Product images:

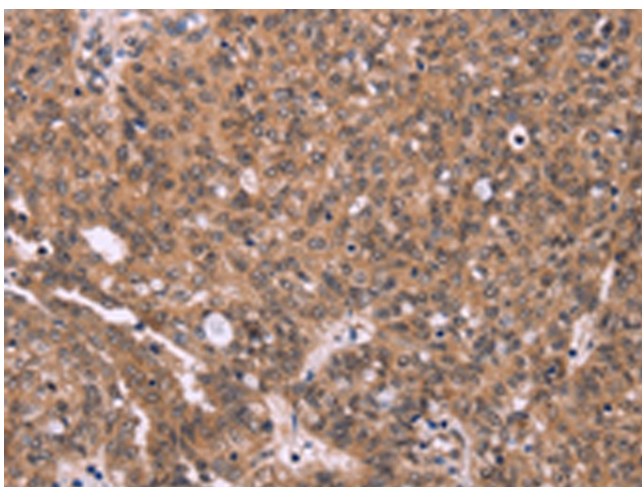
Gel: 10%SDS-PAGE
Lysate: 40 μ g
Lane: Mouse heart tissue
Primary antibody: [TA351164] (ERAS Antibody) at dilution 1/500
Secondary antibody: Goat anti rabbit IgG at 1/8000 dilution
Exposure time: 20 seconds



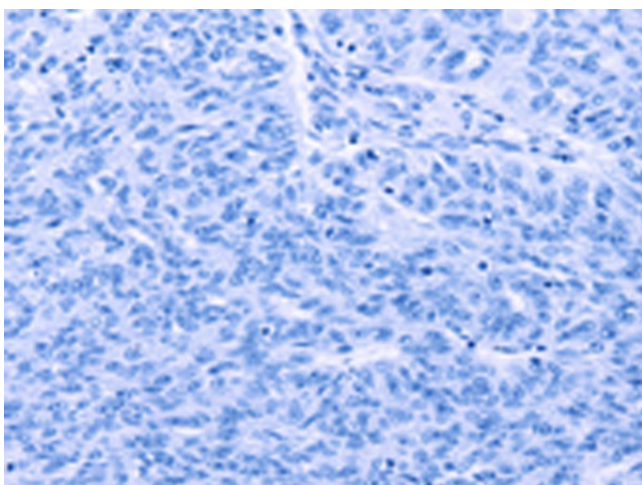
Immunohistochemistry of paraffin-embedded Human thyroid cancer tissue using [TA351164] (ERAS Antibody) at dilution 1/40 (Original magnification: \times 200)



Immunohistochemistry of paraffin-embedded Human thyroid cancer tissue using [TA351164] (ERAS Antibody) at dilution 1/40, treated with synthetic peptide. (Original magnification: ×200)



Immunohistochemistry of paraffin-embedded Human ovarian cancer tissue using [TA351164] (ERAS Antibody) at dilution 1/40 (Original magnification: ×200)



Immunohistochemistry of paraffin-embedded Human ovarian cancer tissue using [TA351164] (ERAS Antibody) at dilution 1/40, treated with synthetic peptide. (Original magnification: ×200)