

Product datasheet for **TA351161**

Epigen (EPGN) Rabbit Polyclonal Antibody

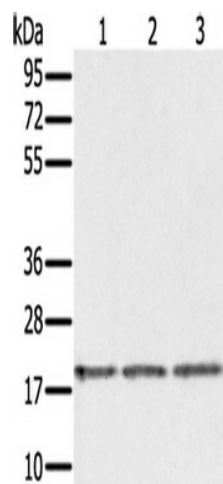
Product data:

Product Type:	Primary Antibodies
Applications:	WB
Recommended Dilution:	ELISA: 1000-2000, WB: 200-1000
Reactivity:	Human, Mouse
Host:	Rabbit
Isotype:	IgG
Clonality:	Polyclonal
Immunogen:	Synthetic peptide of human EPGN
Formulation:	pH7.4 PBS, 0.05% NaN ₃ , 40% Glycerol
Concentration:	lot specific
Purification:	Antigen affinity purification
Conjugation:	Unconjugated
Storage:	Store at -20°C as received.
Stability:	Stable for 12 months from date of receipt.
Predicted Protein Size:	17 kDa
Gene Name:	epithelial mitogen
Database Link:	NP_001013460 Entrez Gene 255324 Human Q6UW88
Background:	The protein encoded by this gene is a member of the epidermal growth factor family. Members of this family are ligands for the epidermal growth factor receptor and play a role in cell survival, proliferation and migration. This protein has been reported to have high mitogenic activity but low affinity for its receptor. Expression of this transcript and protein have been reported in cancer specimens of the breast, bladder, and prostate. Alternative splicing results in multiple transcript variants.
Synonyms:	ALGV3072; EPG; epigen; PRO9904
Protein Families:	Transmembrane



[View online »](#)

Product images:



Gel: 12%SDS-PAGE, Lysate: 40 ug, Lane 1-3: Jurkat cells, 293T cells, hela cells, Primary antibody: (EPGN Antibody) at dilution 1/150, Secondary antibody: Goat anti rabbit IgG at 1/8000 dilution, Exposure time: 1 minute