

## Product datasheet for **TA351160S**

### Ephrin A5 (EFNA5) Rabbit Polyclonal Antibody

#### Product data:

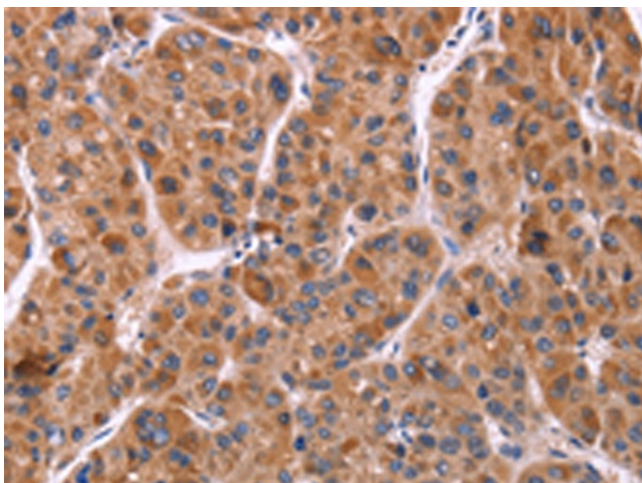
Product Type:	Primary Antibodies
Applications:	IHC
Recommended Dilution:	IHC: 50-200 Positive control: Human liver cancer Predicted cell location: Cytoplasm or Nucleus
Reactivity:	Human, Mouse, Rat
Host:	Rabbit
Isotype:	IgG
Clonality:	Polyclonal
Immunogen:	Synthetic peptide of human EFNA5
Formulation:	pH7.4 PBS, 0.05% NaN <sub>3</sub> , 40% Glycerol
Purification:	Antigen affinity purification
Conjugation:	Unconjugated
Storage:	Store at -20°C as received.
Stability:	Stable for 12 months from date of receipt.
Gene Name:	ephrin A5
Database Link:	<a href="#">NP_001953</a> <a href="#">Entrez Gene 13640 Mouse</a> <a href="#">Entrez Gene 116683 Rat</a> <a href="#">Entrez Gene 1946 Human</a> <a href="#">P52803</a>
Background:	Ephrin-A5, a member of the ephrin gene family, prevents axon bundling in cocultures of cortical neurons with astrocytes, a model of late stage nervous system development and differentiation. The EPH and EPH-related receptors comprise the largest subfamily of receptor protein-tyrosine kinases and have been implicated in mediating developmental events, particularly in the nervous system. EPH receptors typically have a single kinase domain and an extracellular region containing a Cys-rich domain and 2 fibronectin type III repeats. The ephrin ligands and receptors have been named by the Eph Nomenclature Committee (1997).
Synonyms:	AF1; EFL5; EPLG7; GLC1M; LERK7; RAGS
Protein Families:	Druggable Genome



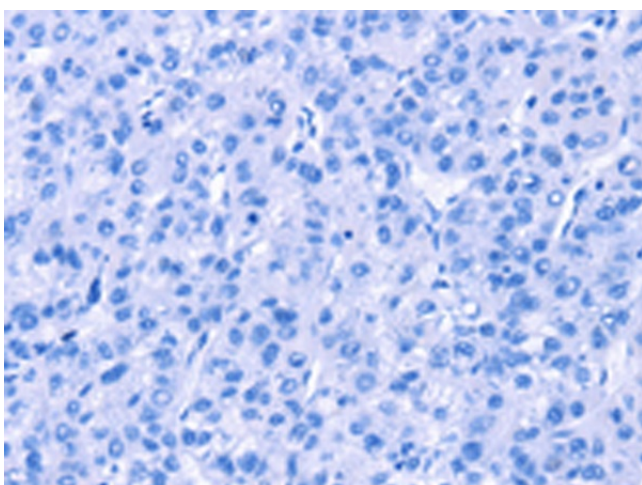
[View online »](#)

Protein Pathways: Axon guidance

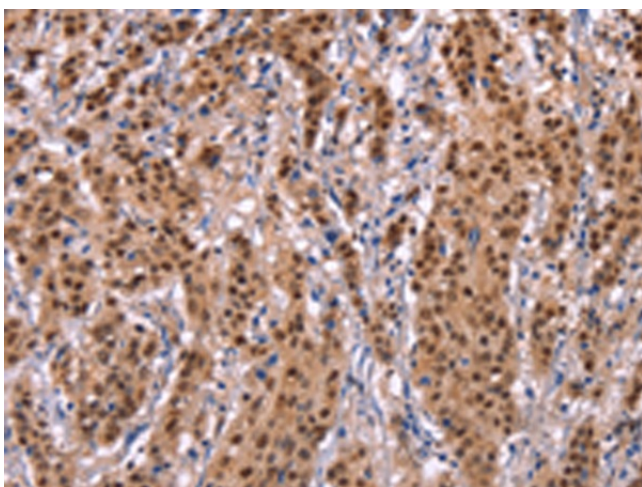
### Product images:



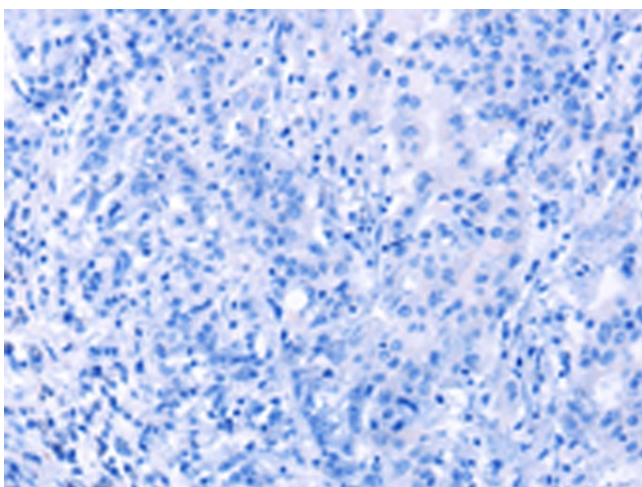
Immunohistochemistry of paraffin-embedded Human liver cancer tissue using [TA351160] (EFNA5 Antibody) at dilution 1/40 (Original magnification:  $\times 200$ )



Immunohistochemistry of paraffin-embedded Human liver cancer tissue using [TA351160] (EFNA5 Antibody) at dilution 1/40, treated with synthetic peptide. (Original magnification:  $\times 200$ )



Immunohistochemistry of paraffin-embedded Human gastric cancer tissue using [TA351160] (EFNA5 Antibody) at dilution 1/40 (Original magnification:  $\times 200$ )



Immunohistochemistry of paraffin-embedded Human gastric cancer tissue using [TA351160] (EFNA5 Antibody) at dilution 1/40, treated with synthetic peptide. (Original magnification:  $\times 200$ )