

Product datasheet for **TA351153S**

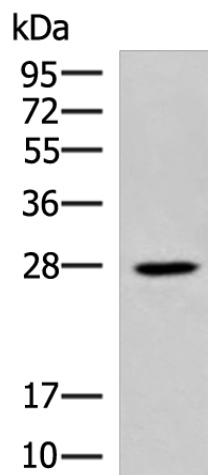
ELOVL6 Rabbit Polyclonal Antibody

Product data:

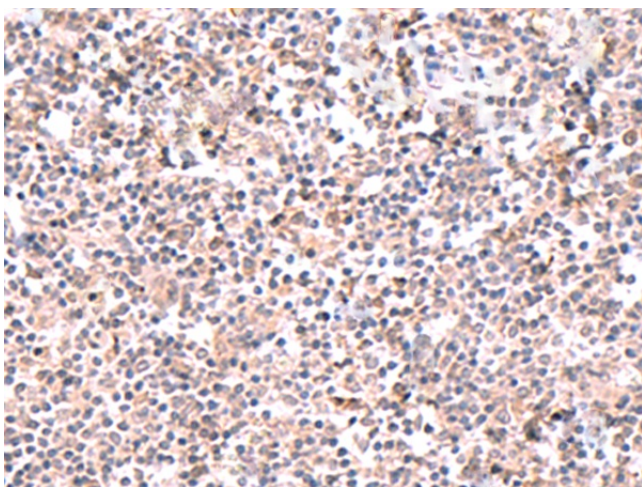
| | |
|-------------------------|---|
| Product Type: | Primary Antibodies |
| Applications: | IHC, WB |
| Recommended Dilution: | WB: 500-2000 WB positive control: Mouse brain tissue lysate IHC: 20-100 Positive control: Human tonsil Predicted cell location: Cytoplasm |
| Reactivity: | Human, Mouse |
| Host: | Rabbit |
| Isotype: | IgG |
| Clonality: | Polyclonal |
| Immunogen: | Synthetic peptide of human ELOVL6 |
| Formulation: | pH7.4 PBS, 0.05% NaN ₃ , 40% Glycerol |
| Purification: | Antigen affinity purification |
| Conjugation: | Unconjugated |
| Storage: | Store at -20°C as received. |
| Stability: | Stable for 12 months from date of receipt. |
| Predicted Protein Size: | 32 kDa |
| Gene Name: | ELOVL fatty acid elongase 6 |
| Database Link: | NP_076995 Entrez Gene 170439 Mouse Entrez Gene 79071 Human Q9H5J4 |
| Background: | Fatty acid elongases (EC 6.2.1.3), such as ELOVL6, use malonyl-CoA as a 2-carbon donor in the first and rate-limiting step of fatty acid elongation |
| Synonyms: | FACE; FAE; LCE |
| Protein Families: | Transmembrane |
| Protein Pathways: | Biosynthesis of unsaturated fatty acids |



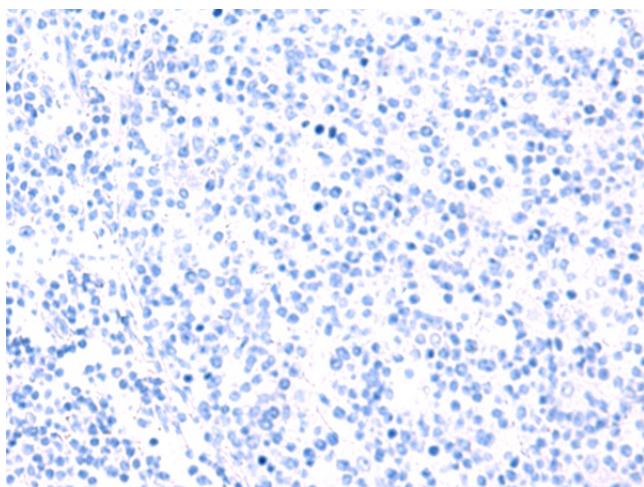
[View online »](#)

Product images:

Gel: 12%SDS-PAGE
Lysate: 40 µg
Lane: Mouse brain tissue lysate
Primary antibody: [TA351153] (ELOVL6 Antibody) at dilution 1/500
Secondary antibody: Goat anti rabbit IgG at 1/5000 dilution
Exposure time: 10 seconds



Immunohistochemistry of paraffin-embedded Human tonsil tissue using [TA351153] (ELOVL6 Antibody) at dilution 1/20 (Original magnification: ×200)



Immunohistochemistry of paraffin-embedded Human tonsil tissue using [TA351153] (ELOVL6 Antibody) at dilution 1/20, treated with synthetic peptide. (Original magnification: $\times 200$)