

Product datasheet for **TA351153**

ELOVL6 Rabbit Polyclonal Antibody

Product data:

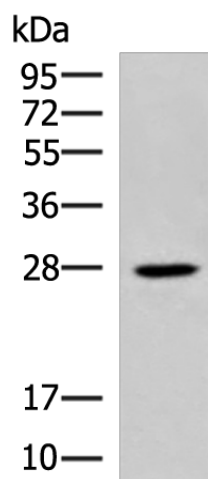
Product Type:	Primary Antibodies
Applications:	IHC, WB
Recommended Dilution:	WB: 500-2000 WB positive control: Mouse brain tissue lysate IHC: 20-100 Positive control: Human tonsil Predicted cell location: Cytoplasm
Reactivity:	Human, Mouse
Host:	Rabbit
Isotype:	IgG
Clonality:	Polyclonal
Immunogen:	Synthetic peptide of human ELOVL6
Formulation:	pH7.4 PBS, 0.05% NaN ₃ , 40% Glycerol
Concentration:	lot specific
Purification:	Antigen affinity purification
Conjugation:	Unconjugated
Storage:	Store at -20°C as received.
Stability:	Stable for 12 months from date of receipt.
Predicted Protein Size:	32 kDa
Gene Name:	ELOVL fatty acid elongase 6
Database Link:	NP_076995 Entrez Gene 170439 Mouse Entrez Gene 79071 Human Q9H5J4
Background:	Fatty acid elongases (EC 6.2.1.3), such as ELOVL6, use malonyl-CoA as a 2-carbon donor in the first and rate-limiting step of fatty acid elongation
Synonyms:	FACE; FAE; LCE
Protein Families:	Transmembrane



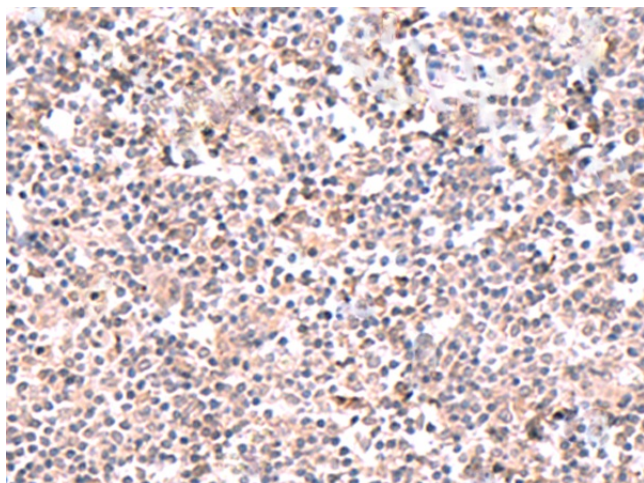
[View online »](#)

Protein Pathways: Biosynthesis of unsaturated fatty acids

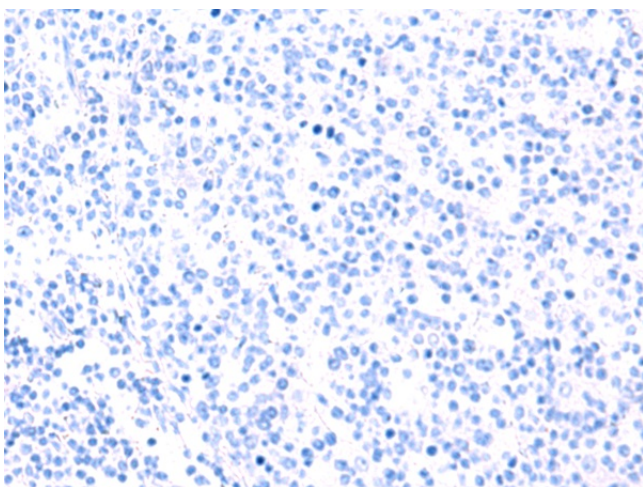
Product images:



Gel: 12%SDS-PAGE
Lysate: 40 μ g
Lane: Mouse brain tissue lysate
Primary antibody: TA351153 (ELOVL6 Antibody)
at dilution 1/500
Secondary antibody: Goat anti rabbit IgG at
1/5000 dilution
Exposure time: 10 seconds



Immunohistochemistry of paraffin-embedded
Human tonsil tissue using TA351153 (ELOVL6
Antibody) at dilution 1/20 (Original magnification:
 $\times 200$)



Immunohistochemistry of paraffin-embedded Human tonsil tissue using TA351153 (ELOVL6 Antibody) at dilution 1/20, treated with synthetic peptide. (Original magnification: $\times 200$)