

## Product datasheet for **TA351150S**

### EID3 Rabbit Polyclonal Antibody

#### Product data:

|                         |   |
|-------------------------|---|
| Product Type:           | Primary Antibodies  |
| Applications:           | IHC, WB   |
| Recommended Dilution:   | WB: 200-1000<br>WB positive control: Mouse kidney tissue<br>IHC: 25-100<br>Positive control: Human thyroid cancer<br>Predicted cell location: Cytoplasm |
| Reactivity:             | Human, Mouse  |
| Host:                   | Rabbit  |
| Isotype:                | IgG   |
| Clonality:              | Polyclonal  |
| Immunogen:              | Synthetic peptide of human EID3   |
| Formulation:            | pH7.4 PBS, 0.05% NaN <sub>3</sub> , 40% Glycerol  |
| Purification:           | Antigen affinity purification   |
| Conjugation:            | Unconjugated  |
| Storage:                | Store at -20°C as received.   |
| Stability:              | Stable for 12 months from date of receipt.  |
| Predicted Protein Size: | 38 kDa  |
| Gene Name:              | EP300 interacting inhibitor of differentiation 3  |
| Database Link:          | <a href="#">NP_001008395</a><br><a href="#">Entrez Gene 493861 Human</a><br><a href="#">Q8N140</a>  |



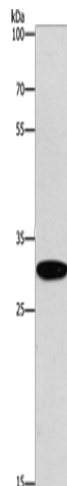
[View online »](#)

**Background:**

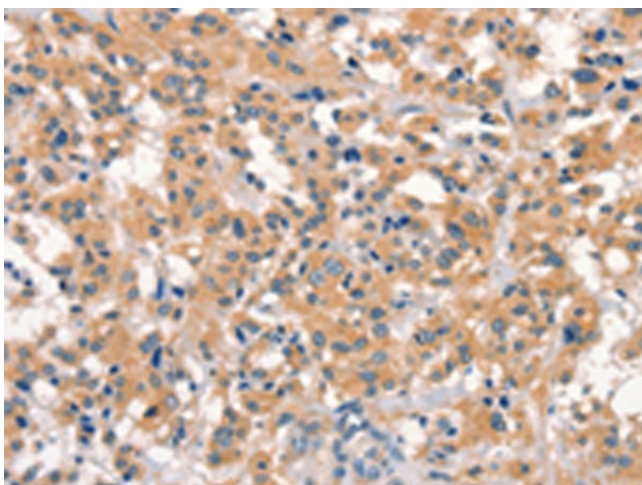
EID3 is highly expressed in testis and shows homology to a region of EID1 implicated in binding to CBP/p300. EID3 acts as a potent inhibitor of nuclear receptor transcriptional activity by a mechanism that is independent of direct interactions with nuclear receptors, including SHP. Furthermore, EID3 directly binds to and blocks the SRC-1 interacting domain of CBP, which has been implicated to act as the interaction surface for nuclear receptor co-activators. Consistent with this idea, EID3 prevents recruitment of CBP to a natural nuclear receptor-regulated promoter.

**Synonyms:**

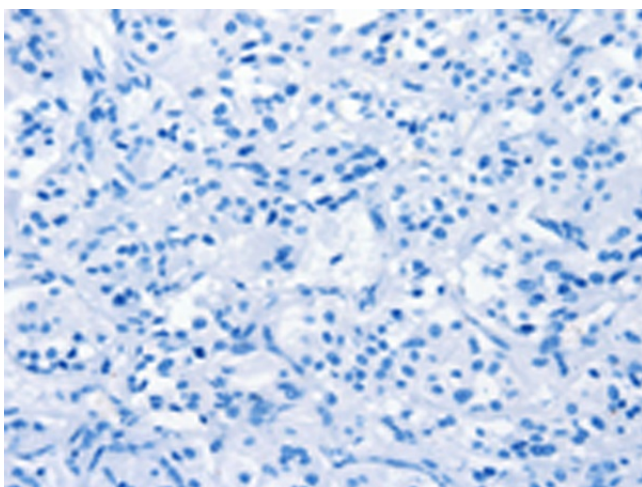
NS4EB; NSE4B; NSMCE4B

**Product images:**

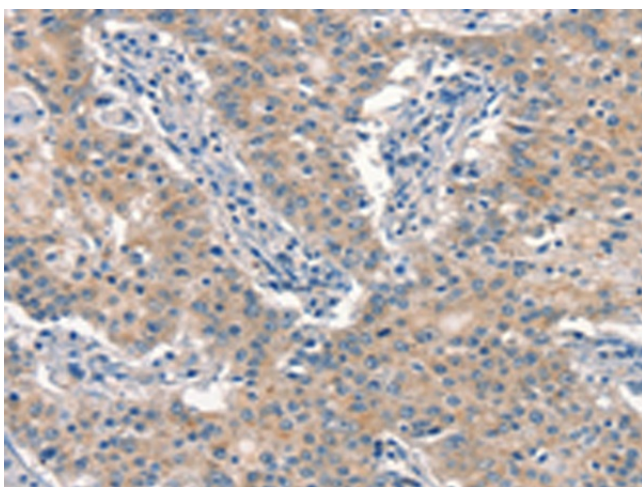
Gel: 8%SDS-PAGE  
Lysate: 40  $\mu$ g  
Lane: Mouse kidney tissue  
Primary antibody: [TA351150] (EID3 Antibody) at dilution 1/200  
Secondary antibody: Goat anti rabbit IgG at 1/8000 dilution  
Exposure time: 1 minute



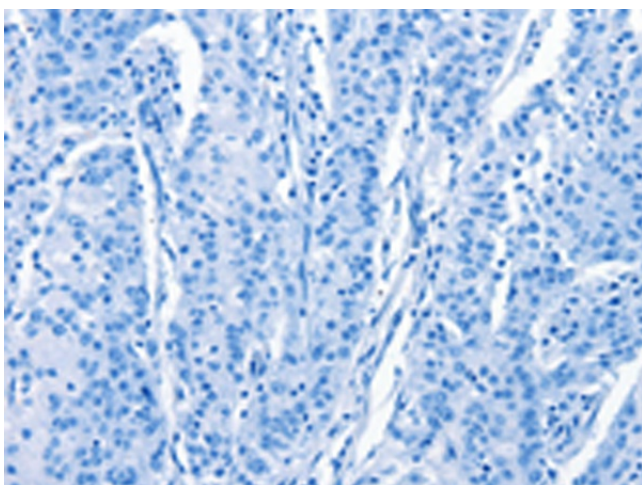
Immunohistochemistry of paraffin-embedded Human thyroid cancer tissue using [TA351150] (EID3 Antibody) at dilution 1/15 (Original magnification:  $\times$ 200)



Immunohistochemistry of paraffin-embedded Human thyroid cancer tissue using [TA351150] (EID3 Antibody) at dilution 1/15, treated with synthetic peptide. (Original magnification: ×200)



Immunohistochemistry of paraffin-embedded Human gastric cancer tissue using [TA351150] (EID3 Antibody) at dilution 1/15 (Original magnification: ×200)



Immunohistochemistry of paraffin-embedded Human gastric cancer tissue using [TA351150] (EID3 Antibody) at dilution 1/15, treated with synthetic peptide. (Original magnification: ×200)