

## Product datasheet for **TA351150**

### EID3 Rabbit Polyclonal Antibody

#### Product data:

Product Type:	Primary Antibodies
Applications:	IHC, WB
Recommended Dilution:	WB: 200-1000 WB positive control: Mouse kidney tissue IHC: 25-100 Positive control: Human thyroid cancer Predicted cell location: Cytoplasm
Reactivity:	Human, Mouse
Host:	Rabbit
Isotype:	IgG
Clonality:	Polyclonal
Immunogen:	Synthetic peptide of human EID3
Formulation:	pH7.4 PBS, 0.05% NaN <sub>3</sub> , 40% Glycerol
Concentration:	lot specific
Purification:	Antigen affinity purification
Conjugation:	Unconjugated
Storage:	Store at -20°C as received.
Stability:	Stable for 12 months from date of receipt.
Predicted Protein Size:	38 kDa
Gene Name:	EP300 interacting inhibitor of differentiation 3
Database Link:	<a href="#">NP_001008395</a> <a href="#">Entrez Gene 493861 Human</a> <a href="#">Q8N140</a>



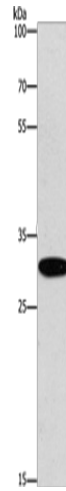
[View online »](#)

**Background:**

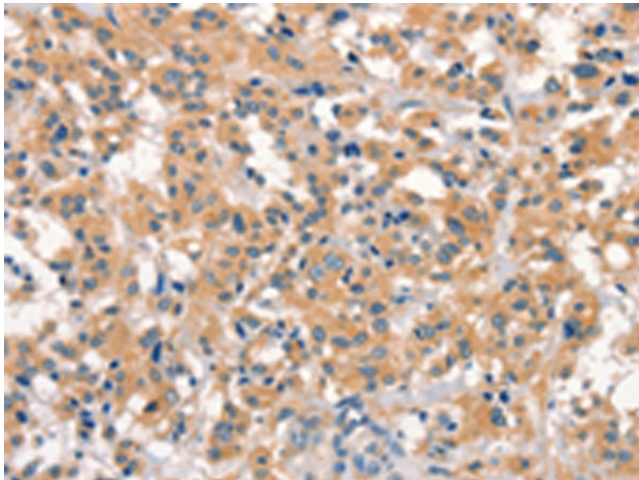
EID3 is highly expressed in testis and shows homology to a region of EID1 implicated in binding to CBP/p300. EID3 acts as a potent inhibitor of nuclear receptor transcriptional activity by a mechanism that is independent of direct interactions with nuclear receptors, including SHP. Furthermore, EID3 directly binds to and blocks the SRC-1 interacting domain of CBP, which has been implicated to act as the interaction surface for nuclear receptor co-activators. Consistent with this idea, EID3 prevents recruitment of CBP to a natural nuclear receptor-regulated promoter.

**Synonyms:**

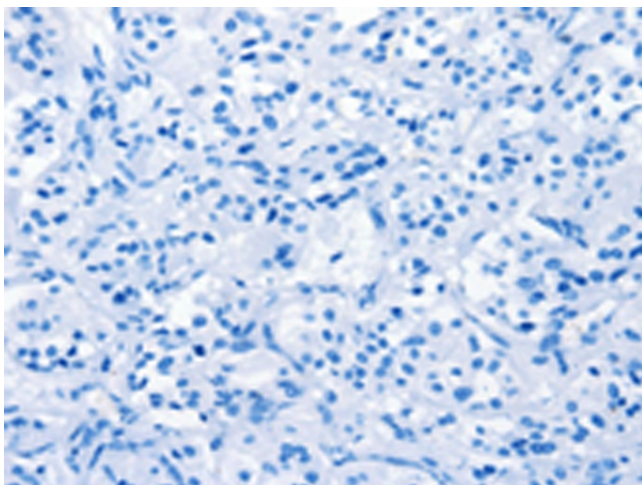
NS4EB; NSE4B; NSMCE4B

**Product images:**

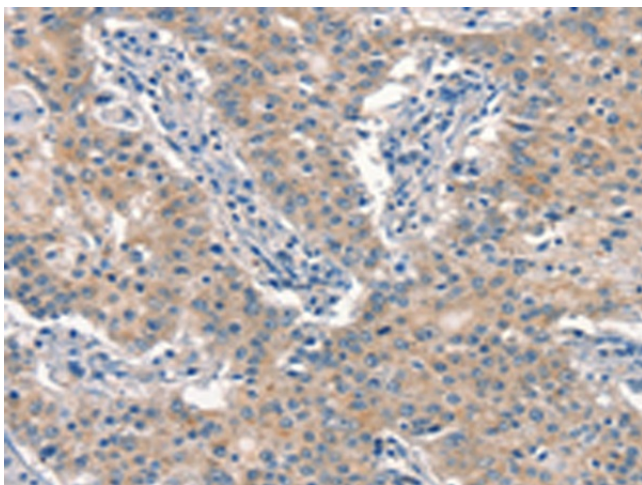
Gel: 8%SDS-PAGE  
Lysate: 40 µg  
Lane: Mouse kidney tissue  
Primary antibody: TA351150 (EID3 Antibody) at dilution 1/200  
Secondary antibody: Goat anti rabbit IgG at 1/8000 dilution  
Exposure time: 1 minute



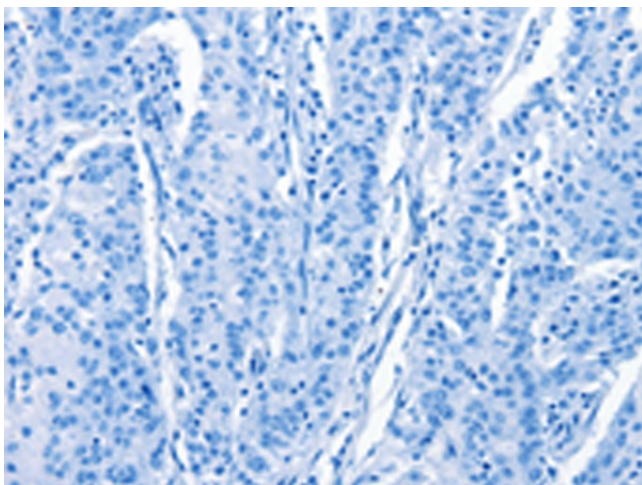
Immunohistochemistry of paraffin-embedded Human thyroid cancer tissue using TA351150 (EID3 Antibody) at dilution 1/15 (Original magnification: ×200)



Immunohistochemistry of paraffin-embedded Human thyroid cancer tissue using TA351150 (EID3 Antibody) at dilution 1/15, treated with synthetic peptide. (Original magnification: ×200)



Immunohistochemistry of paraffin-embedded Human gastric cancer tissue using TA351150 (EID3 Antibody) at dilution 1/15 (Original magnification: ×200)



Immunohistochemistry of paraffin-embedded Human gastric cancer tissue using TA351150 (EID3 Antibody) at dilution 1/15, treated with synthetic peptide. (Original magnification: ×200)