

## Product datasheet for **TA351149**

### Dynamin 2 (DNM2) Rabbit Polyclonal Antibody

#### Product data:

Product Type:	Primary Antibodies
Applications:	IHC, WB
Recommended Dilution:	WB: 500-2000 WB positive control: Hela, NIH/3T3 and Raji cells IHC: 50-200 Positive control: Human gastric cancer Predicted cell location: Cytoplasm
Reactivity:	Human, Mouse, Rat
Host:	Rabbit
Isotype:	IgG
Clonality:	Polyclonal
Immunogen:	Synthetic peptide of human DNM2
Formulation:	pH7.4 PBS, 0.05% NaN <sub>3</sub> , 40% Glycerol
Concentration:	lot specific
Purification:	Antigen affinity purification
Conjugation:	Unconjugated
Storage:	Store at -20°C as received.
Stability:	Stable for 12 months from date of receipt.
Predicted Protein Size:	98 kDa
Gene Name:	dynamin 2
Database Link:	<a href="#">NP_004936</a> <a href="#">Entrez Gene 13430 Mouse</a> <a href="#">Entrez Gene 25751 Rat</a> <a href="#">Entrez Gene 1785 Human</a> <a href="#">P50570</a>



[View online »](#)

### Background:

Dynamins represent one of the subfamilies of GTP-binding proteins. These proteins share considerable sequence similarity over the N-terminal portion of the molecule, which contains the GTPase domain. Dynamins are associated with microtubules. They have been implicated in cell processes such as endocytosis and cell motility, and in alterations of the membrane that accompany certain activities such as bone resorption by osteoclasts. Dynamins bind many proteins that bind actin and other cytoskeletal proteins. Dynamins can also self-assemble, a process that stimulates GTPase activity. Five alternatively spliced transcripts encoding different proteins have been described.

### Synonyms:

CMT2M; CMTDI1; CMTDIB; DI-CMTB; DYN2; DYNII; LCCS5

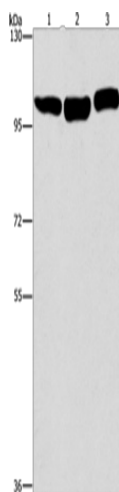
### Protein Families:

Transcription Factors

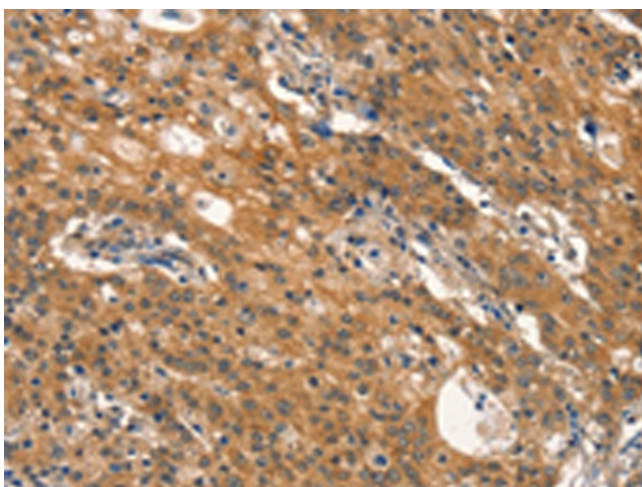
### Protein Pathways:

Endocytosis, Fc gamma R-mediated phagocytosis

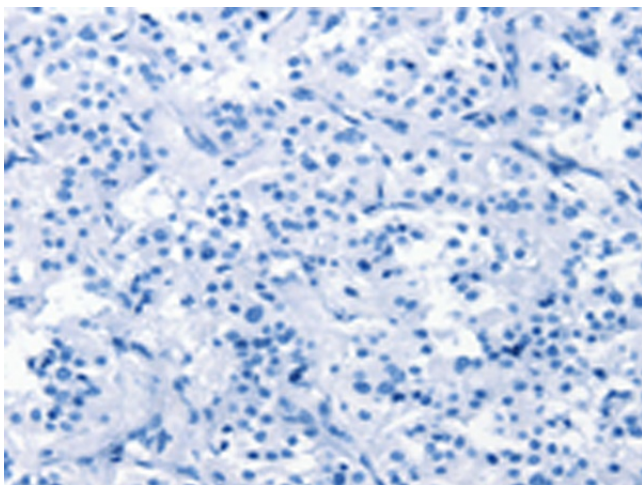
### Product images:



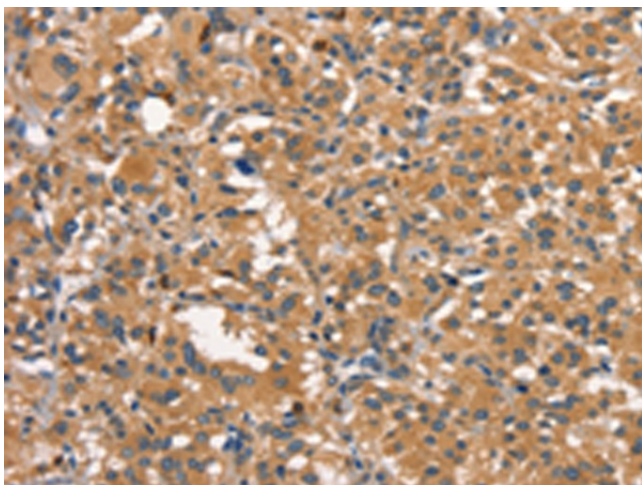
Gel: 6%SDS-PAGE  
 Lysate: 40 µg  
 Lane 1-3: HeLa cells  
 NIH/3T3 cells  
 Raji cells  
 Primary antibody: TA351149 (DNM2 Antibody) at dilution 1/400  
 Secondary antibody: Goat anti rabbit IgG at 1/8000 dilution  
 Exposure time: 30 seconds



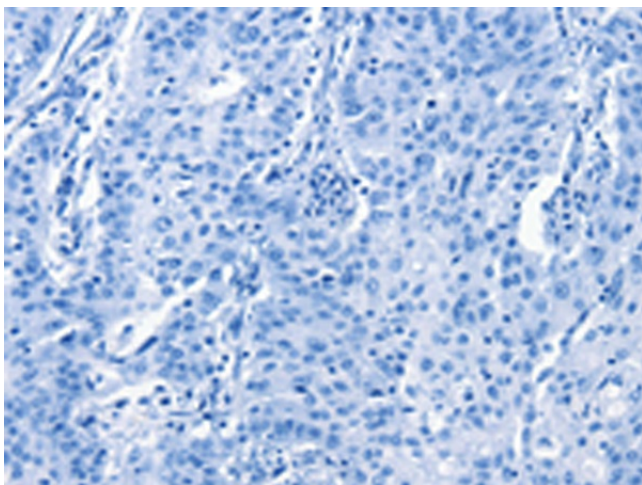
Immunohistochemistry of paraffin-embedded Human gastric cancer tissue using TA351149 (DNM2 Antibody) at dilution 1/40 (Original magnification: x200)



Immunohistochemistry of paraffin-embedded Human gastric cancer tissue using TA351149 (DNM2 Antibody) at dilution 1/40, treated with synthetic peptide. (Original magnification: ×200)



Immunohistochemistry of paraffin-embedded Human thyroid cancer tissue using TA351149 (DNM2 Antibody) at dilution 1/40 (Original magnification: ×200)



Immunohistochemistry of paraffin-embedded Human thyroid cancer tissue using TA351149 (DNM2 Antibody) at dilution 1/40, treated with synthetic peptide. (Original magnification: ×200)