

Product datasheet for **TA351144S**

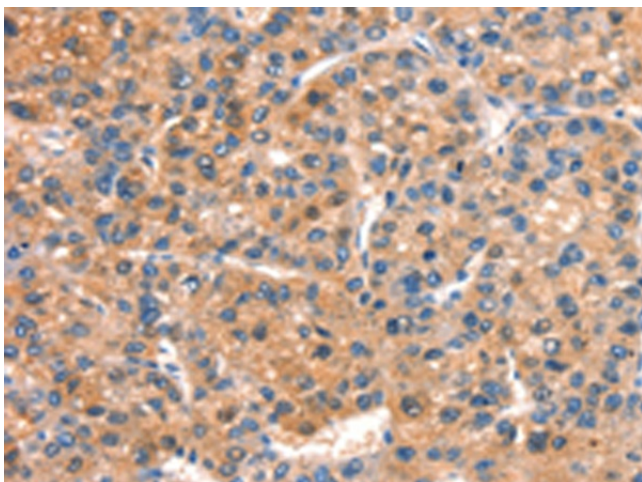
DOCK1 Rabbit Polyclonal Antibody

Product data:

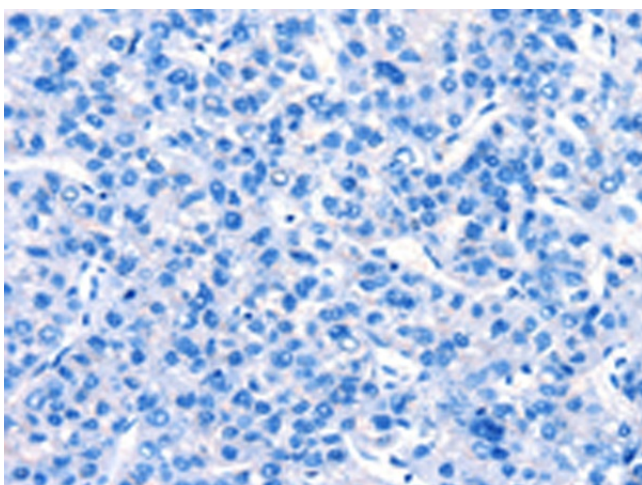
Product Type:	Primary Antibodies
Applications:	IHC
Recommended Dilution:	IHC: 25-100 Positive control: Human liver cancer Predicted cell location: Cytoplasm
Reactivity:	Human, Mouse
Host:	Rabbit
Isotype:	IgG
Clonality:	Polyclonal
Immunogen:	Synthetic peptide of human DOCK1
Formulation:	pH7.4 PBS, 0.05% NaN ₃ , 40% Glycerol
Purification:	Antigen affinity purification
Conjugation:	Unconjugated
Storage:	Store at -20°C as received.
Stability:	Stable for 12 months from date of receipt.
Gene Name:	dedicator of cytokinesis 1
Database Link:	NP_001371 Entrez Gene 330662 Mouse Entrez Gene 1793 Human Q14185
Background:	This gene product binds to the SH3 domain of CRK protein. It may regulate cell surface extension and may have a role in the cell surface extension of an engulfing cell around a dying cell during apoptosis.
Synonyms:	ced5; DOCK180
Protein Families:	Druggable Genome
Protein Pathways:	Focal adhesion, Regulation of actin cytoskeleton



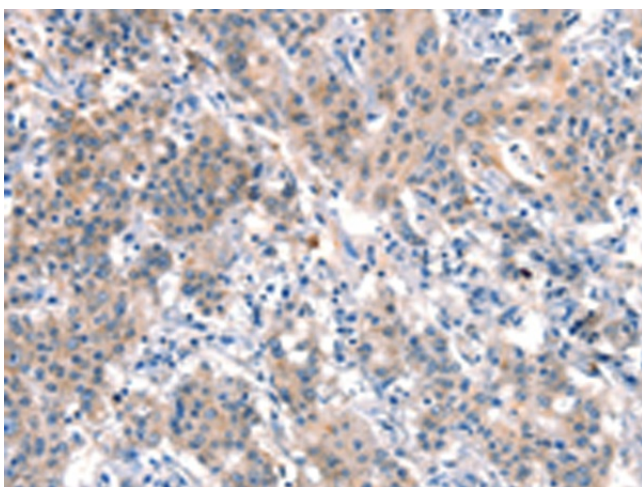
[View online »](#)

Product images:

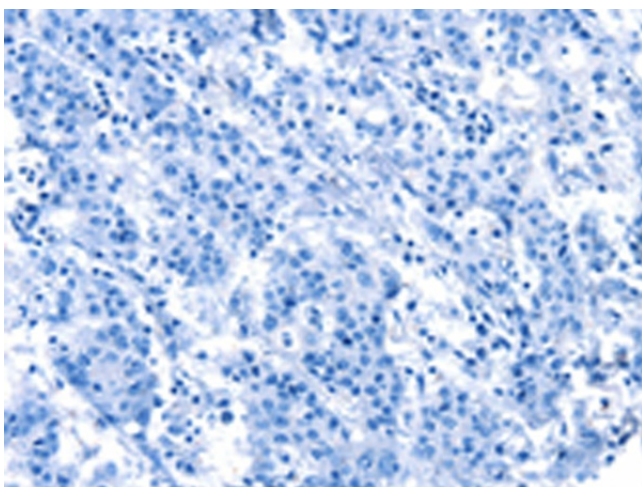
Immunohistochemistry of paraffin-embedded Human liver cancer tissue using [TA351144] (DOCK1 Antibody) at dilution 1/25 (Original magnification: ×200)



Immunohistochemistry of paraffin-embedded Human liver cancer tissue using [TA351144] (DOCK1 Antibody) at dilution 1/25, treated with synthetic peptide. (Original magnification: ×200)



Immunohistochemistry of paraffin-embedded Human gastric cancer tissue using [TA351144] (DOCK1 Antibody) at dilution 1/25 (Original magnification: $\times 200$)



Immunohistochemistry of paraffin-embedded Human gastric cancer tissue using [TA351144] (DOCK1 Antibody) at dilution 1/25, treated with synthetic peptide. (Original magnification: $\times 200$)