

## Product datasheet for **TA351142S**

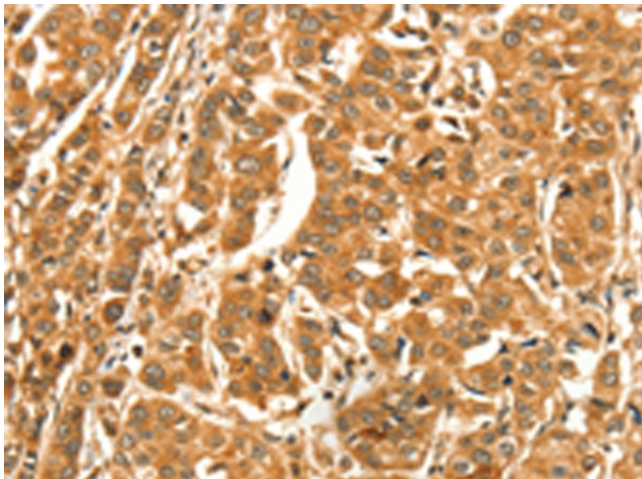
### DIRAS1 Rabbit Polyclonal Antibody

#### Product data:

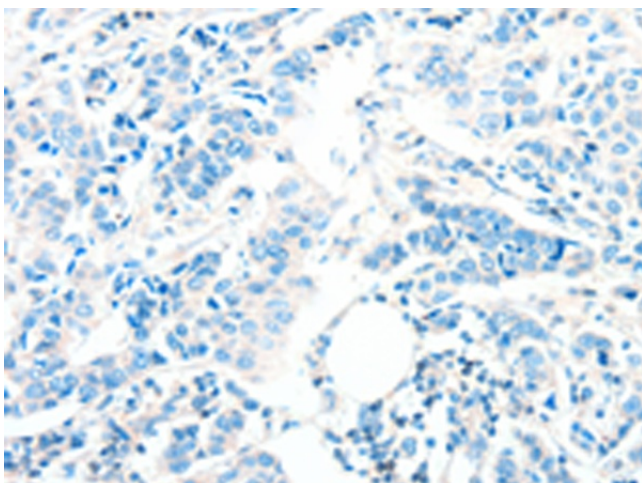
Product Type:	Primary Antibodies
Applications:	IHC
Recommended Dilution:	IHC: 50-200 Positive control: Human breast cancer Predicted cell location: Cytoplasm
Reactivity:	Human
Host:	Rabbit
Isotype:	IgG
Clonality:	Polyclonal
Immunogen:	Synthetic peptide of human DIRAS1
Formulation:	pH7.4 PBS, 0.05% NaN <sub>3</sub> , 40% Glycerol
Purification:	Antigen affinity purification
Conjugation:	Unconjugated
Storage:	Store at -20°C as received.
Stability:	Stable for 12 months from date of receipt.
Gene Name:	DIRAS family GTPase 1
Database Link:	<a href="#">NP_660156</a> <a href="#">Entrez Gene 148252 Human</a> <a href="#">O95057</a>
Background:	DIRAS1 (DIRAS family, GTP-binding Ras-like 1), also known as distinct subgroup of the Ras family member 1, RIG (Ras-related inhibitor of cell growth), small GTP-binding tumor suppressor 1 or GBTS1, is a 198 amino acid cell membrane protein expressed at high levels in brain and heart. DIRAS1 displays low GTPase activity and is encoded by a gene that maps to human chromosome 19p13.3.
Synonyms:	Di-Ras1; GBTS1; RIG



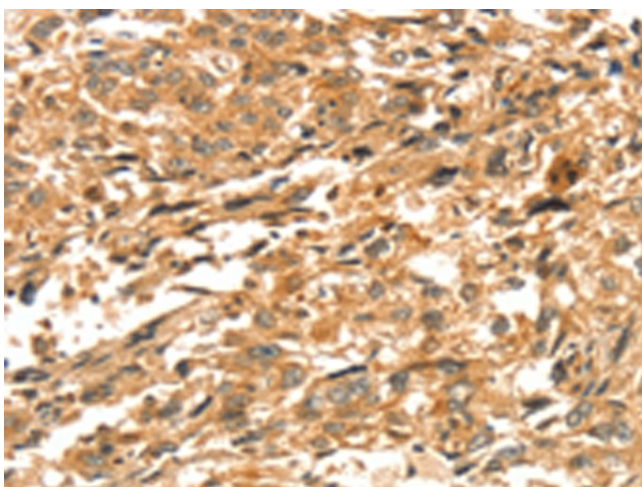
[View online »](#)

**Product images:**

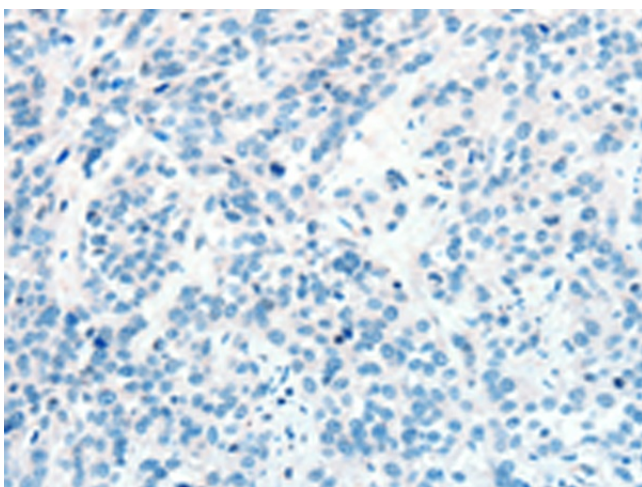
Immunohistochemistry of paraffin-embedded Human breast cancer tissue using [TA351142] (DIRAS1 Antibody) at dilution 1/52 (Original magnification:  $\times 200$ )



Immunohistochemistry of paraffin-embedded Human breast cancer tissue using [TA351142] (DIRAS1 Antibody) at dilution 1/52, treated with synthetic peptide. (Original magnification:  $\times 200$ )



Immunohistochemistry of paraffin-embedded Human esophagus cancer tissue using [TA351142] (DIRAS1 Antibody) at dilution 1/52 (Original magnification:  $\times 200$ )



Immunohistochemistry of paraffin-embedded Human esophagus cancer tissue using [TA351142] (DIRAS1 Antibody) at dilution 1/52, treated with synthetic peptide. (Original magnification:  $\times 200$ )