

## Product datasheet for **TA351137**

### DGAT1 Rabbit Polyclonal Antibody

#### Product data:

Product Type:	Primary Antibodies
Applications:	IHC, WB
Recommended Dilution:	WB: 200-1000 WB positive control: Hela cell lysate IHC: 20-100 Positive control: Human tonsil Predicted cell location: Cytoplasm
Reactivity:	Human, Mouse, Rat
Host:	Rabbit
Isotype:	IgG
Clonality:	Polyclonal
Immunogen:	Synthetic peptide of human DGAT1
Formulation:	pH7.4 PBS, 0.05% NaN <sub>3</sub> , 40% Glycerol
Concentration:	lot specific
Purification:	Antigen affinity purification
Conjugation:	Unconjugated
Storage:	Store at -20°C as received.
Stability:	Stable for 12 months from date of receipt.
Predicted Protein Size:	55 kDa
Gene Name:	diacylglycerol O-acyltransferase 1
Database Link:	<a href="#">NP_036211</a> <a href="#">Entrez Gene 13350 Mouse</a> <a href="#">Entrez Gene 84497 Rat</a> <a href="#">Entrez Gene 8694 Human</a> <a href="#">O75907</a>
Background:	This gene encodes a multipass transmembrane protein that functions as a key metabolic enzyme. The encoded protein catalyzes the conversion of diacylglycerol and fatty acyl CoA to triacylglycerol. This enzyme can also transfer acyl CoA to retinol. Activity of this protein may be associated with obesity and other metabolic diseases
Synonyms:	ARAT; ARG1; DGAT; DIAR7

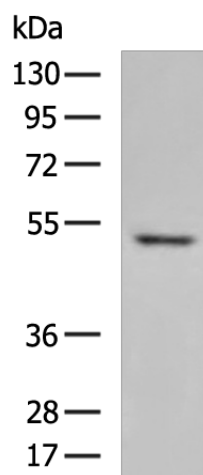


[View online »](#)

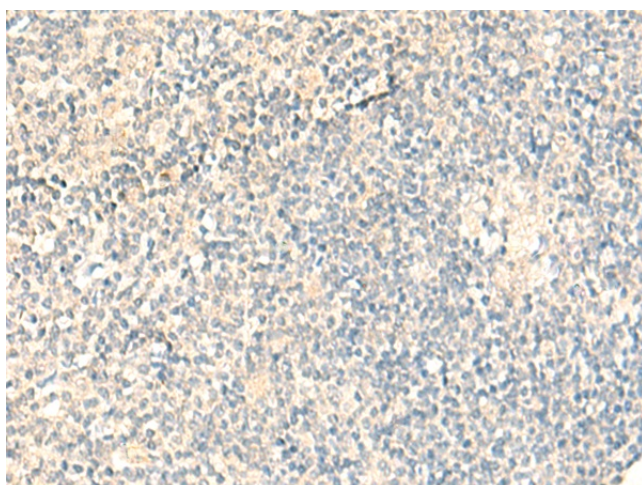
Protein Families: Transmembrane

Protein Pathways: Glycerolipid metabolism, Metabolic pathways, Retinol metabolism

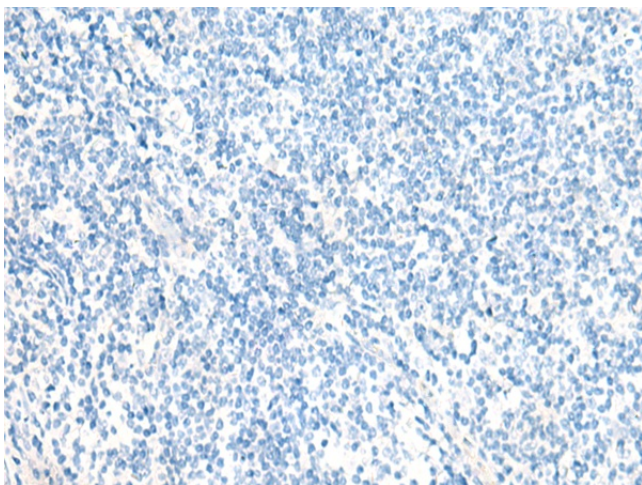
### Product images:



Gel: 8%SDS-PAGE  
Lysate: 40  $\mu$ g  
Lane: HeLa cell lysate  
Primary antibody: TA351137 (DGAT1 Antibody) at dilution 1/300  
Secondary antibody: Goat anti rabbit IgG at 1/5000 dilution  
Exposure time: 2 minutes



Immunohistochemistry of paraffin-embedded Human tonsil tissue using TA351137 (DGAT1 Antibody) at dilution 1/20 (Original magnification:  $\times$ 200)



Immunohistochemistry of paraffin-embedded Human tonsil tissue using TA351137 (DGAT1 Antibody) at dilution 1/20, treated with synthetic peptide. (Original magnification:  $\times 200$ )