

Product datasheet for **TA351136**

Desmoglein 1 (DSG1) Rabbit Polyclonal Antibody

Product data:

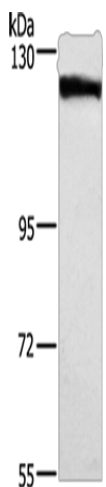
Product Type:	Primary Antibodies
Applications:	WB
Recommended Dilution:	WB: 200-1000 WB positive control: Human tongue cancer tissue
Reactivity:	Human, Mouse
Host:	Rabbit
Isotype:	IgG
Clonality:	Polyclonal
Immunogen:	Synthetic peptide of human DSG1
Formulation:	pH7.4 PBS, 0.05% NaN ₃ , 40% Glycerol
Concentration:	lot specific
Purification:	Antigen affinity purification
Conjugation:	Unconjugated
Storage:	Store at -20°C as received.
Stability:	Stable for 12 months from date of receipt.
Predicted Protein Size:	114 kDa
Gene Name:	desmoglein 1
Database Link:	NP_001933 Entrez Gene 1828 Human Q02413
Background:	Desmosomes are cell-cell junctions between epithelial, myocardial and certain other cell types. Desmoglein 1 is a calcium-binding transmembrane glycoprotein component of desmosomes in vertebrate epithelial cells. Currently, three desmoglein subfamily members have been identified and all are members of the cadherin cell adhesion molecule superfamily. These desmoglein gene family members are located in a cluster on chromosome 18. The protein encoded by this gene has been identified as the autoantigen of the autoimmune skin blistering disease pemphigus foliaceus.
Synonyms:	CDHF4; DG1; DSG; EPKHE; EPKHIA; PPKS1; SPPK1



[View online »](#)

Protein Families: Druggable Genome

Product images:



Gel: 6%SDS-PAGE
Lysate: 40 μ g
Lane: Human tongue cancer tissue
Primary antibody: TA351136 (DSG1 Antibody) at dilution 1/750
Secondary antibody: Goat anti rabbit IgG at 1/8000 dilution
Exposure time: 2 minutes