

## Product datasheet for **TA351135S**

### Desmocollin 2 (DSC2) Rabbit Polyclonal Antibody

#### Product data:

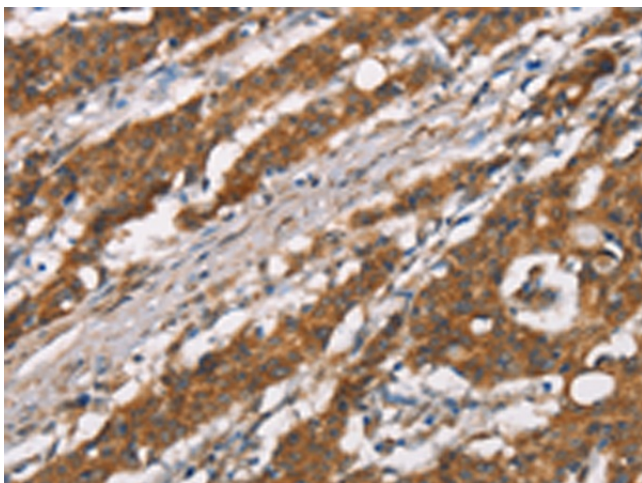
Product Type:	Primary Antibodies
Applications:	IHC
Recommended Dilution:	IHC: 50-200 Positive control: Human gastric cancer Predicted cell location: Cytoplasm
Reactivity:	Human
Host:	Rabbit
Isotype:	IgG
Clonality:	Polyclonal
Immunogen:	Synthetic peptide of human DSC2
Formulation:	pH7.4 PBS, 0.05% NaN <sub>3</sub> , 40% Glycerol
Purification:	Antigen affinity purification
Conjugation:	Unconjugated
Storage:	Store at -20°C as received.
Stability:	Stable for 12 months from date of receipt.
Gene Name:	desmocollin 2
Database Link:	<a href="#">NP_077740</a> <a href="#">Entrez Gene 1824 Human</a> <a href="#">Q02487</a>
Background:	The protein encoded by this gene is a calcium-dependent glycoprotein that is a member of the desmocollin subfamily of the cadherin superfamily. These desmosomal family members, along with the desmogleins, are found primarily in epithelial cells where they constitute the adhesive proteins of the desmosome cell-cell junction and are required for cell adhesion and desmosome formation. The desmosomal family members are arranged in two clusters on chromosome 18, occupying less than 650 kb combined. Mutations in this gene are associated with arrhythmogenic right ventricular dysplasia-11.
Synonyms:	ARVD11; CDHF2; DG2; DGII; DSC3; III
Protein Families:	Transmembrane



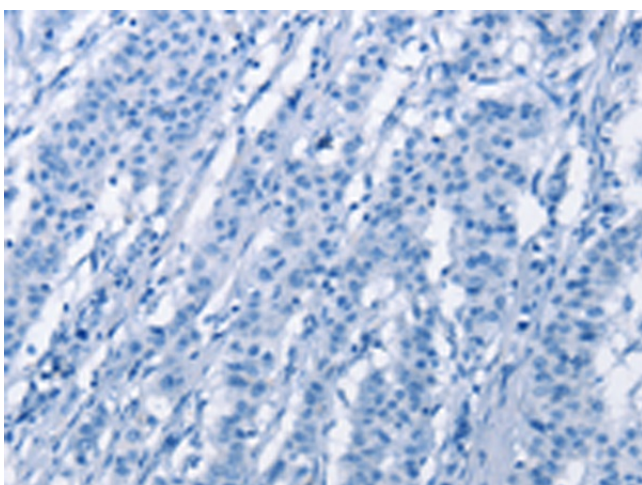
[View online »](#)

Protein Pathways: Arrhythmogenic right ventricular cardiomyopathy (ARVC)

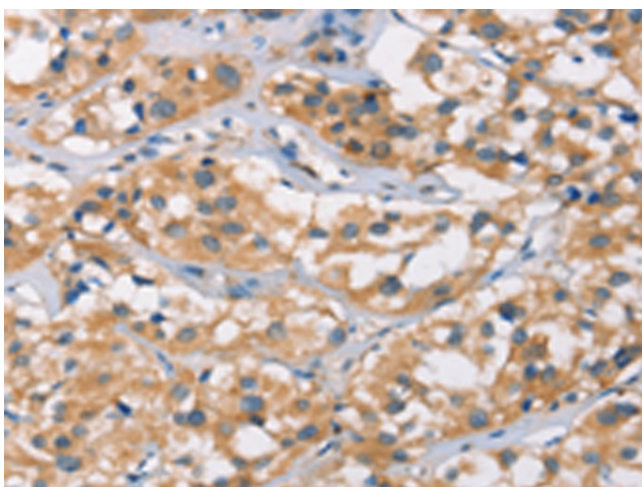
**Product images:**



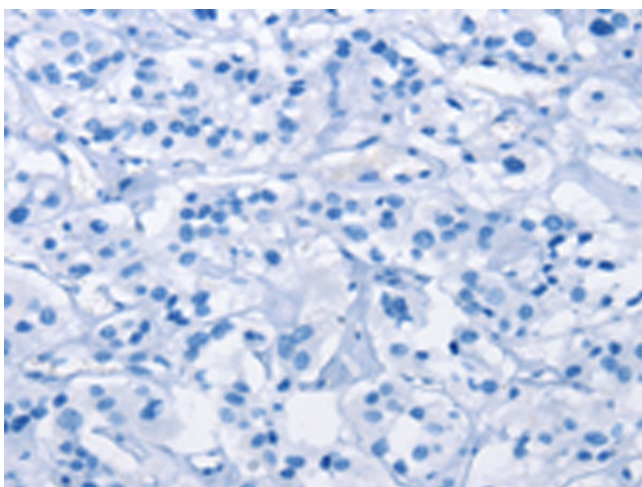
Immunohistochemistry of paraffin-embedded Human gastric cancer tissue using [TA351135] (DSC2 Antibody) at dilution 1/35 (Original magnification: ×200)



Immunohistochemistry of paraffin-embedded Human gastric cancer tissue using [TA351135] (DSC2 Antibody) at dilution 1/35, treated with synthetic peptide. (Original magnification: ×200)



Immunohistochemistry of paraffin-embedded Human thyroid cancer tissue using [TA351135] (DSC2 Antibody) at dilution 1/35 (Original magnification: ×200)



Immunohistochemistry of paraffin-embedded Human thyroid cancer tissue using [TA351135] (DSC2 Antibody) at dilution 1/35, treated with synthetic peptide. (Original magnification: ×200)