

## Product datasheet for **TA351133S**

### Deltex (DTX1) Rabbit Polyclonal Antibody

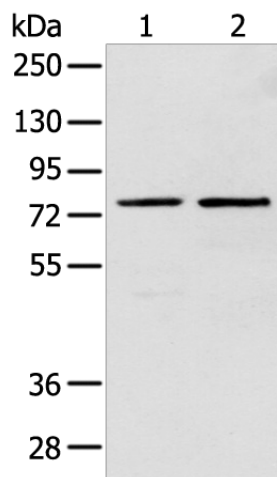
#### Product data:

Product Type:	Primary Antibodies
Applications:	IHC, WB
Recommended Dilution:	WB: 200-1000 WB positive control: Human fetal brain tissue and Hela cell IHC: 50-200 Positive control: Human cervical cancer Predicted cell location: cytoplasm
Reactivity:	Human, Mouse
Host:	Rabbit
Isotype:	IgG
Clonality:	Polyclonal
Immunogen:	Synthetic peptide of human DTX1
Formulation:	pH7.4 PBS, 0.05% NaN <sub>3</sub> , 40% Glycerol
Purification:	Antigen affinity purification
Conjugation:	Unconjugated
Storage:	Store at -20°C as received.
Stability:	Stable for 12 months from date of receipt.
Gene Name:	deltex 1
Database Link:	<a href="#">NP_004407</a> <a href="#">Entrez Gene 14357 Mouse</a> <a href="#">Entrez Gene 1840 Human</a> <a href="#">Q86Y01</a>
Background:	Studies in Drosophila have identified this gene as encoding a positive regulator of the Notch-signaling pathway. The human gene encodes a protein of unknown function; however, it may play a role in basic helix-loop-helix transcription factor activity.
Synonyms:	hDx-1
Protein Families:	Druggable Genome, Transcription Factors
Protein Pathways:	Notch signaling pathway



[View online »](#)

## Product images:



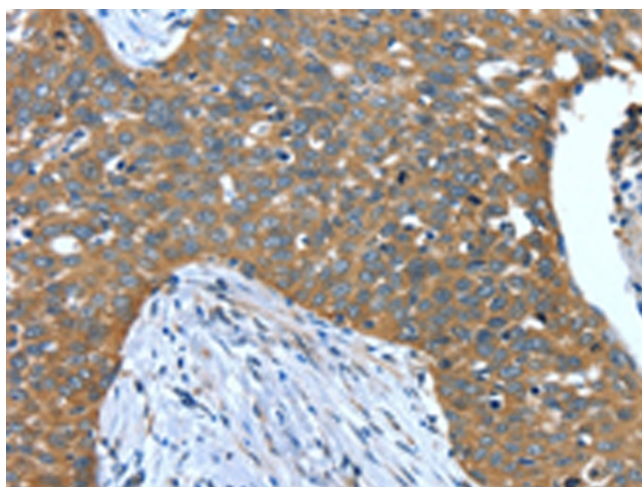
Gel: 8%SDS-PAGE

Lysate: 40  $\mu$ g

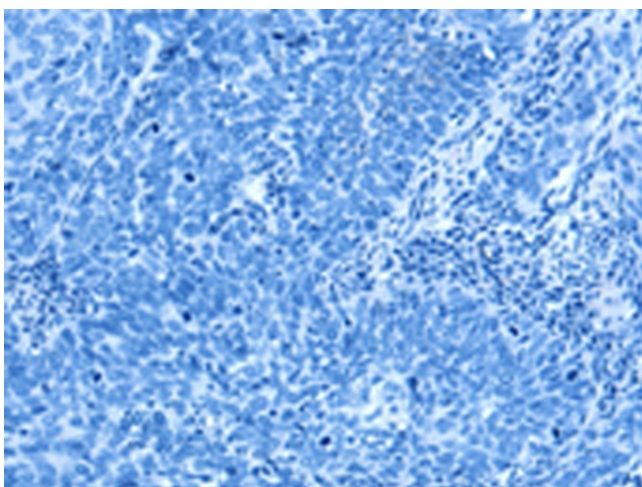
Lane 1-2: Human fetal brain tissue and HeLa cell  
Primary antibody: [TA351133] (DTX1 Antibody) at dilution 1/250

Secondary antibody: Goat anti rabbit IgG at 1/8000 dilution

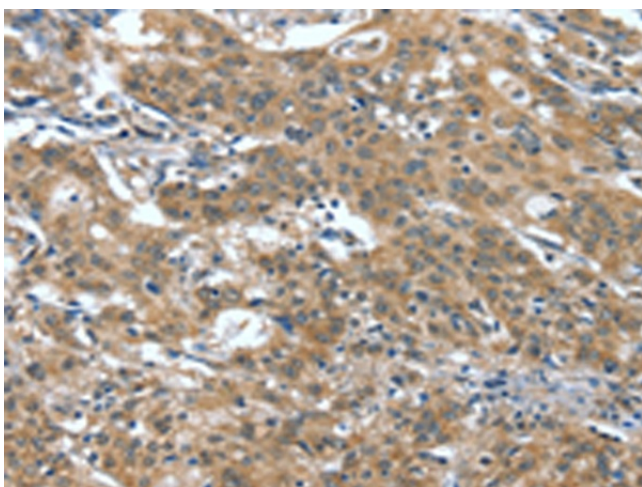
Exposure time: 90 seconds



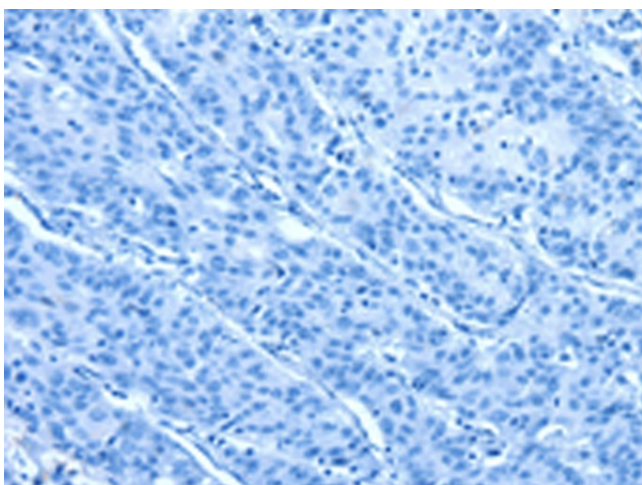
Immunohistochemistry of paraffin-embedded Human cervical cancer tissue using [TA351133] (DTX1 Antibody) at dilution 1/40 (Original magnification:  $\times$ 200)



Immunohistochemistry of paraffin-embedded Human cervical cancer tissue using [TA351133] (DTX1 Antibody) at dilution 1/40, treated with synthetic peptide. (Original magnification: ×200)



Immunohistochemistry of paraffin-embedded Human gastric cancer tissue using [TA351133] (DTX1 Antibody) at dilution 1/40 (Original magnification: ×200)



Immunohistochemistry of paraffin-embedded Human gastric cancer tissue using [TA351133] (DTX1 Antibody) at dilution 1/40, treated with synthetic peptide. (Original magnification: ×200)