

## Product datasheet for **TA351130**

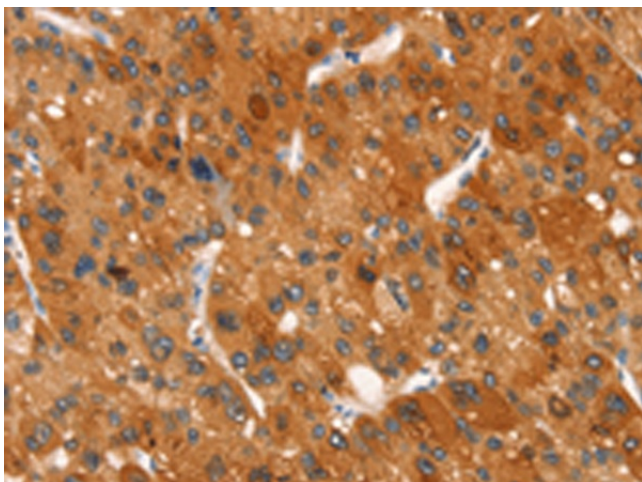
### DECTIN 2 (CLEC6A) Rabbit Polyclonal Antibody

#### Product data:

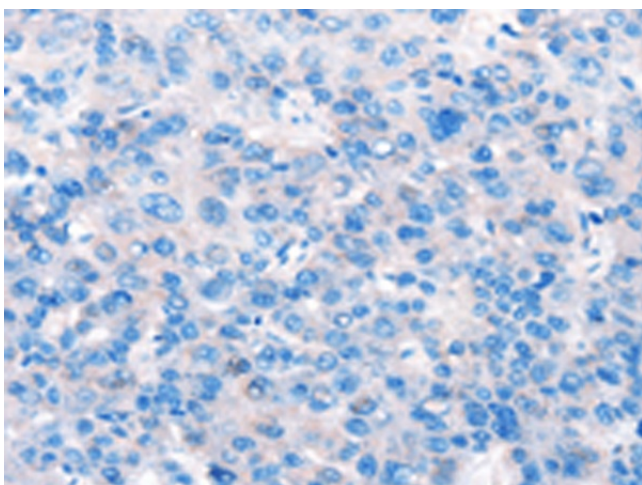
Product Type:	Primary Antibodies
Applications:	IHC
Recommended Dilution:	IHC: 25-100 Positive control: Human liver cancer Predicted cell location: Cytoplasm
Reactivity:	Human
Host:	Rabbit
Isotype:	IgG
Clonality:	Polyclonal
Immunogen:	Synthetic peptide of human CLEC6A
Formulation:	pH7.4 PBS, 0.05% NaN <sub>3</sub> , 40% Glycerol
Concentration:	lot specific
Purification:	Antigen affinity purification
Conjugation:	Unconjugated
Storage:	Store at -20°C as received.
Stability:	Stable for 12 months from date of receipt.
Gene Name:	C-type lectin domain family 6 member A
Database Link:	<a href="#">NP_001007034</a> <a href="#">Entrez Gene 93978 Human</a> <a href="#">Q6EIG7</a>
Background:	Like dectin-1 (CLEC7A; MIM 606264), CLEC6A, or dectin-2, is a type II membrane receptor with an extracellular C-type lectin-like domain fold. However, unlike dectin-1, dectin-2 lacks an immunoreceptor tyrosine-based activation motif (ITAM) in its cytoplasmic domain
Synonyms:	CLEC4N; CLECSF10
Protein Families:	Transmembrane



[View online »](#)

**Product images:**

Immunohistochemistry of paraffin-embedded Human liver cancer tissue using TA351130 (CLEC6A Antibody) at dilution 1/20 (Original magnification: ×200)



Immunohistochemistry of paraffin-embedded Human liver cancer tissue using TA351130 (CLEC6A Antibody) at dilution 1/20, treated with synthetic peptide. (Original magnification: ×200)