

## Product datasheet for **TA351126**

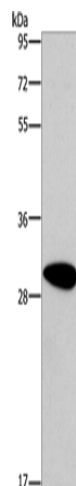
### DDAH2 Rabbit Polyclonal Antibody

#### Product data:

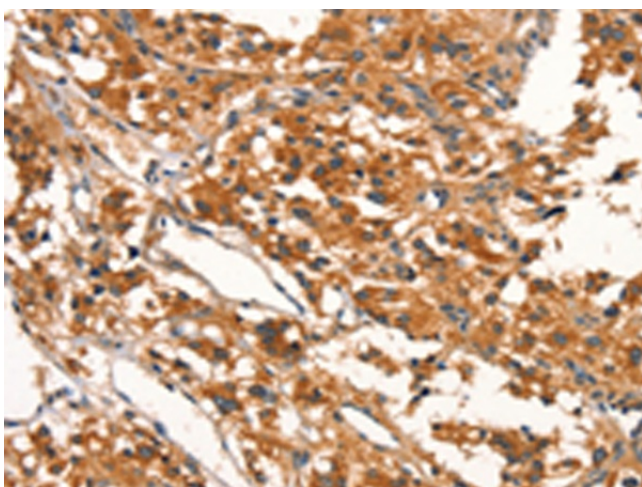
Product Type:	Primary Antibodies
Applications:	IHC, WB
Recommended Dilution:	WB: 200-1000 WB positive control: Human fetal brain tissue IHC: 25-100 Positive control: Human thyroid cancer Predicted cell location: Cytoplasm
Reactivity:	Human, Mouse, Rat
Host:	Rabbit
Isotype:	IgG
Clonality:	Polyclonal
Immunogen:	Synthetic peptide of human DDAH2
Formulation:	pH7.4 PBS, 0.05% NaN <sub>3</sub> , 40% Glycerol
Concentration:	lot specific
Purification:	Antigen affinity purification
Conjugation:	Unconjugated
Storage:	Store at -20°C as received.
Stability:	Stable for 12 months from date of receipt.
Predicted Protein Size:	30 kDa
Gene Name:	dimethylarginine dimethylaminohydrolase 2
Database Link:	<a href="#">NP_039268</a> <a href="#">Entrez Gene 51793 Mouse</a> <a href="#">Entrez Gene 294239 Rat</a> <a href="#">Entrez Gene 23564 Human</a> <a href="#">O95865</a>
Background:	This gene belongs to the dimethylarginine dimethylaminohydrolase (DDAH) gene family. The encoded enzyme plays a role in nitric oxide generation by regulating cellular concentrations of methylarginines, which in turn inhibit nitric oxide synthase activity.
Synonyms:	DDAH; DDAHII; G6a; HEL-S-277; NG30



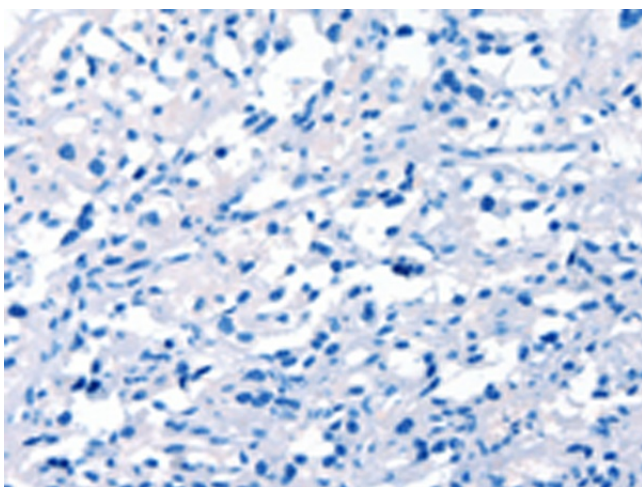
[View online »](#)

**Product images:**

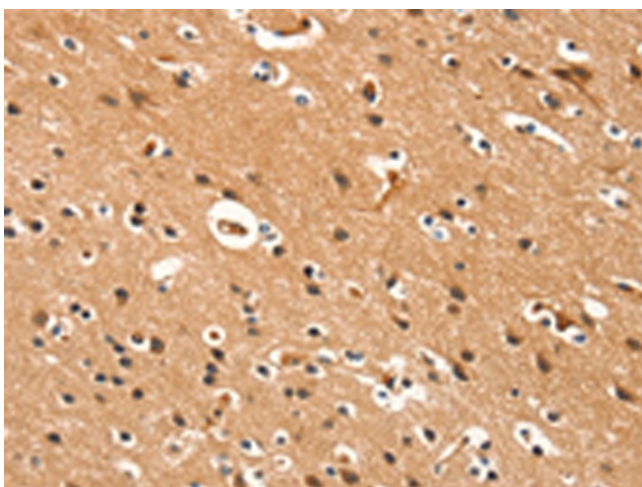
Gel: 10%SDS-PAGE  
Lysate: 40 µg  
Lane: Human fetal brain tissue  
Primary antibody: TA351126 (DDAH2 Antibody) at dilution 1/300  
Secondary antibody: Goat anti rabbit IgG at 1/8000 dilution  
Exposure time: 30 seconds



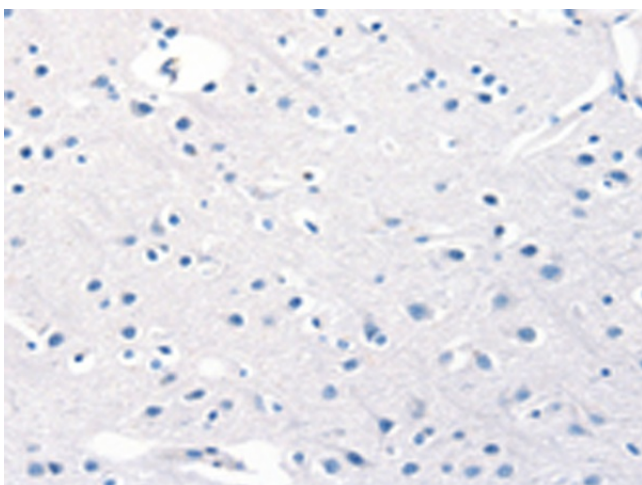
Immunohistochemistry of paraffin-embedded Human thyroid cancer tissue using TA351126 (DDAH2 Antibody) at dilution 1/15 (Original magnification: ×200)



Immunohistochemistry of paraffin-embedded Human thyroid cancer tissue using TA351126 (DDAH2 Antibody) at dilution 1/15, treated with synthetic peptide. (Original magnification: ×200)



Immunohistochemistry of paraffin-embedded Human brain tissue using TA351126 (DDAH2 Antibody) at dilution 1/15 (Original magnification: ×200)



Immunohistochemistry of paraffin-embedded Human brain tissue using TA351126 (DDAH2 Antibody) at dilution 1/15, treated with synthetic peptide. (Original magnification: ×200)