

## Product datasheet for **TA351121**

### Cytochrome P450 2B6 (CYP2B6) Rabbit Polyclonal Antibody

#### Product data:

Product Type:	Primary Antibodies
Applications:	IHC, WB
Recommended Dilution:	WB: 200-1000 WB positive control: Human colon cancer tissue IHC: 25-100 Positive control: Human gastric cancer Predicted cell location: Cytoplasm
Reactivity:	Human
Host:	Rabbit
Isotype:	IgG
Clonality:	Polyclonal
Immunogen:	Synthetic peptide of human CYP2B6
Formulation:	pH7.4 PBS, 0.05% NaN <sub>3</sub> , 40% Glycerol
Concentration:	lot specific
Purification:	Antigen affinity purification
Conjugation:	Unconjugated
Storage:	Store at -20°C as received.
Stability:	Stable for 12 months from date of receipt.
Predicted Protein Size:	56 kDa
Gene Name:	cytochrome P450 family 2 subfamily B member 6
Database Link:	<a href="#">NP_000758</a> <a href="#">Entrez Gene 1555 Human P20813</a>



[View online »](#)

**Background:**

This gene, CYP2B6, encodes a member of the cytochrome P450 superfamily of enzymes. The cytochrome P450 proteins are monooxygenases which catalyze many reactions involved in drug metabolism and synthesis of cholesterol, steroids and other lipids. This protein localizes to the endoplasmic reticulum and its expression is induced by phenobarbital. The enzyme is known to metabolize some xenobiotics, such as the anti-cancer drugs cyclophosphamide and ifosfamide.

**Synonyms:**

CPB6; CYP2B; CYP2B7; CYP2B7P; CYP11B6; EFVM; IIB1; P450

**Protein Families:**

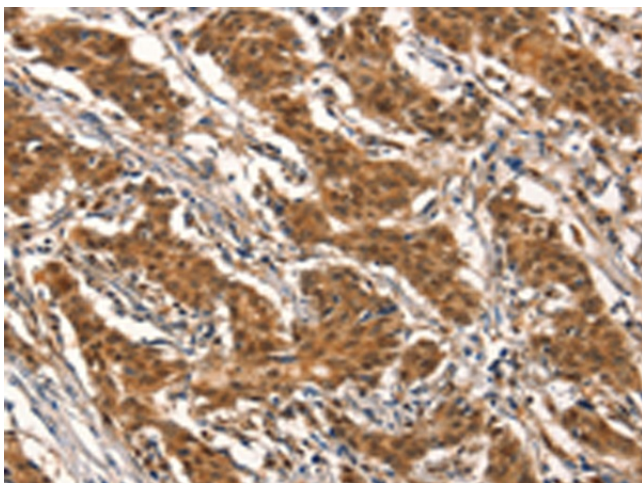
Druggable Genome, P450

**Protein Pathways:**

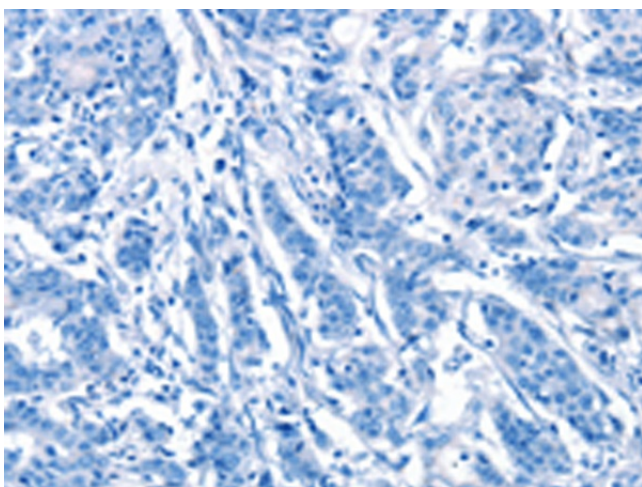
Arachidonic acid metabolism, Drug metabolism - cytochrome P450, Metabolic pathways, Metabolism of xenobiotics by cytochrome P450, Retinol metabolism

**Product images:**

Gel: 8%SDS-PAGE  
Lysate: 40 µg  
Lane: Human colon cancer tissue  
Primary antibody: TA351121 (CYP2B6 Antibody)  
at dilution 1/400  
Secondary antibody: Goat anti rabbit IgG at  
1/8000 dilution  
Exposure time: 4 minutes



Immunohistochemistry of paraffin-embedded  
Human gastric cancer tissue using TA351121  
(CYP2B6 Antibody) at dilution 1/25 (Original  
magnification: ×200)



Immunohistochemistry of paraffin-embedded Human gastric cancer tissue using TA351121 (CYP2B6 Antibody) at dilution 1/25, treated with synthetic peptide. (Original magnification: ×200)