

Product datasheet for **TA351117**

CYP46 (CYP46A1) Rabbit Polyclonal Antibody

Product data:

Product Type:	Primary Antibodies
Applications:	IHC, WB
Recommended Dilution:	WB: 200-1000 WB positive control: Human lymphoma tissue IHC: 25-100 Positive control: Human brain Predicted cell location: Cytoplasm
Reactivity:	Human, Mouse
Host:	Rabbit
Isotype:	IgG
Clonality:	Polyclonal
Immunogen:	Synthetic peptide of human CYP46A1
Formulation:	pH7.4 PBS, 0.05% NaN ₃ , 40% Glycerol
Concentration:	lot specific
Purification:	Antigen affinity purification
Conjugation:	Unconjugated
Storage:	Store at -20°C as received.
Stability:	Stable for 12 months from date of receipt.
Predicted Protein Size:	57 kDa
Gene Name:	cytochrome P450 family 46 subfamily A member 1
Database Link:	NP_006659 Entrez Gene 13116 Mouse Entrez Gene 10858 Human Q9Y6A2



[View online »](#)

Background:

This gene encodes a member of the cytochrome P450 superfamily of enzymes. The cytochrome P450 proteins are monooxygenases which catalyze many reactions involved in drug metabolism and synthesis of cholesterol, steroids and other lipids. This endoplasmic reticulum protein is expressed in the brain, where it converts cholesterol to 24S-hydroxycholesterol. While cholesterol cannot pass the blood-brain barrier, 24S-hydroxycholesterol can be secreted in the brain into the circulation to be returned to the liver for catabolism.

Synonyms:

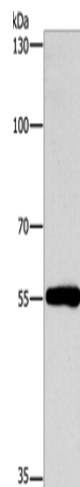
CP46; CYP46

Protein Families:

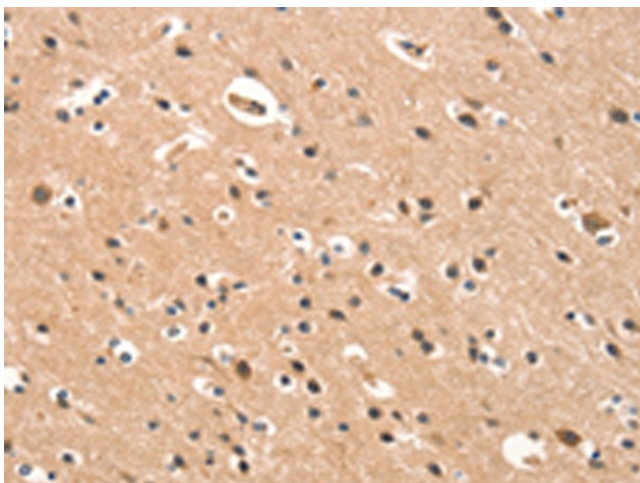
Druggable Genome, P450

Protein Pathways:

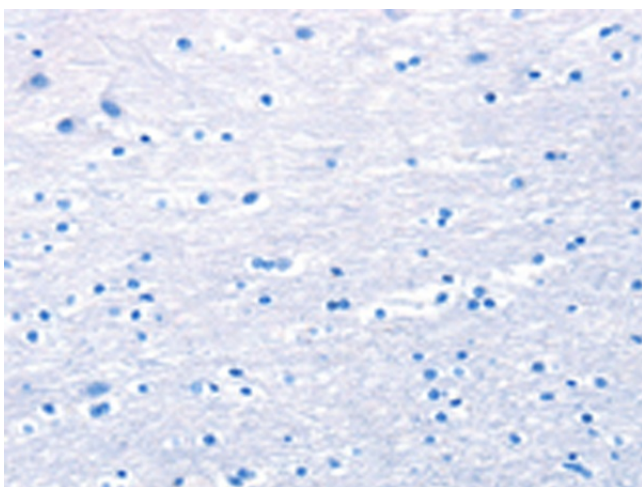
Primary bile acid biosynthesis

Product images:

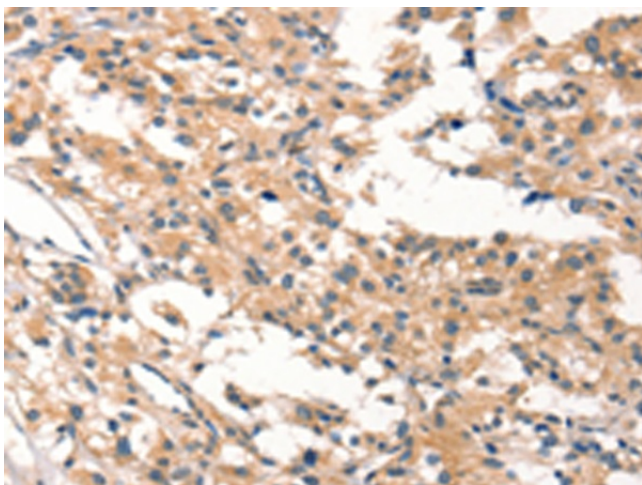
Gel: 8%SDS-PAGE
Lysate: 40 μ g
Lane: Human lymphoma tissue
Primary antibody: TA351117 (CYP46A1 Antibody)
at dilution 1/200
Secondary antibody: Goat anti rabbit IgG at
1/8000 dilution
Exposure time: 1 minute



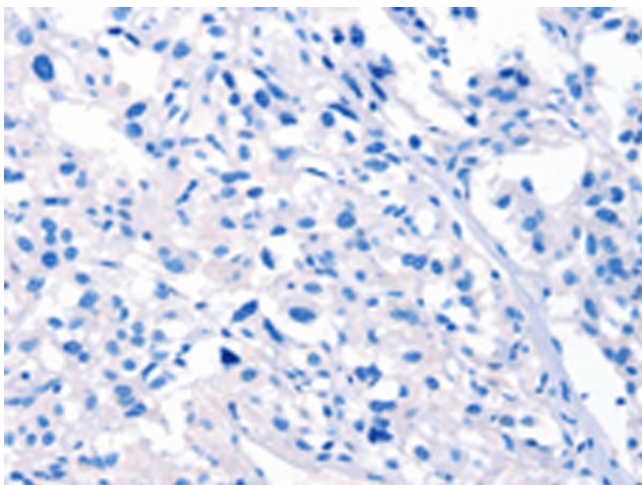
Immunohistochemistry of paraffin-embedded
Human brain tissue using TA351117 (CYP46A1
Antibody) at dilution 1/15 (Original magnification:
 \times 200)



Immunohistochemistry of paraffin-embedded Human brain tissue using TA351117 (CYP46A1 Antibody) at dilution 1/15, treated with synthetic peptide. (Original magnification: $\times 200$)



Immunohistochemistry of paraffin-embedded Human thyroid cancer tissue using TA351117 (CYP46A1 Antibody) at dilution 1/15 (Original magnification: $\times 200$)



Immunohistochemistry of paraffin-embedded Human thyroid cancer tissue using TA351117 (CYP46A1 Antibody) at dilution 1/15, treated with synthetic peptide. (Original magnification: $\times 200$)