

## Product datasheet for **TA351116**

### CYLD Rabbit Polyclonal Antibody

#### Product data:

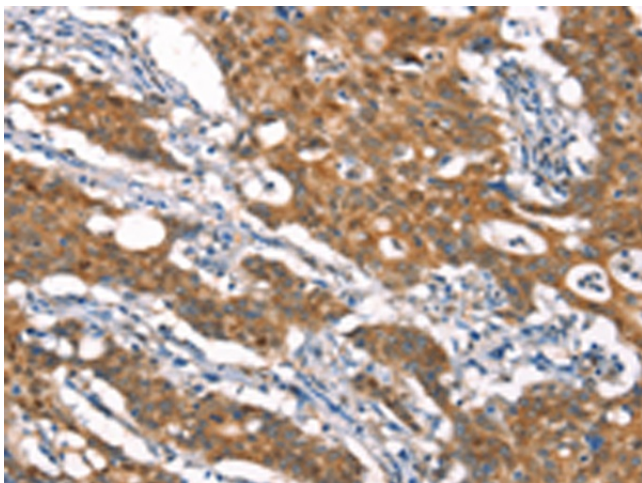
Product Type:	Primary Antibodies
Applications:	IHC
Recommended Dilution:	IHC: 50-200 Positive control: Human gastric cancer Predicted cell location: Cytoplasm
Reactivity:	Human, Mouse, Rat
Host:	Rabbit
Isotype:	IgG
Clonality:	Polyclonal
Immunogen:	Synthetic peptide of human CYLD
Formulation:	pH7.4 PBS, 0.05% NaN <sub>3</sub> , 40% Glycerol
Concentration:	lot specific
Purification:	Antigen affinity purification
Conjugation:	Unconjugated
Storage:	Store at -20°C as received.
Stability:	Stable for 12 months from date of receipt.
Gene Name:	CYLD lysine 63 deubiquitinase
Database Link:	<a href="#">NP_056062</a> <a href="#">Entrez Gene 74256 Mouse</a> <a href="#">Entrez Gene 1540 Human</a> <a href="#">Q9NQC7</a>
Background:	This gene encodes a cytoplasmic protein with three cytoskeletal-associated protein-glycine-conserved (CAP-GLY) domains that functions as a deubiquitinating enzyme. Mutations in this gene have been associated with cylindromatosis, multiple familial trichoepithelioma, and Brooke-Spiegler syndrome. Alternate transcriptional splice variants, encoding different isoforms, have been characterized.
Synonyms:	BRSS; CDMT; CYLD1; CYLDI; EAC; MFT; MFT1; SBS; TEM; USPL2
Protein Families:	Druggable Genome



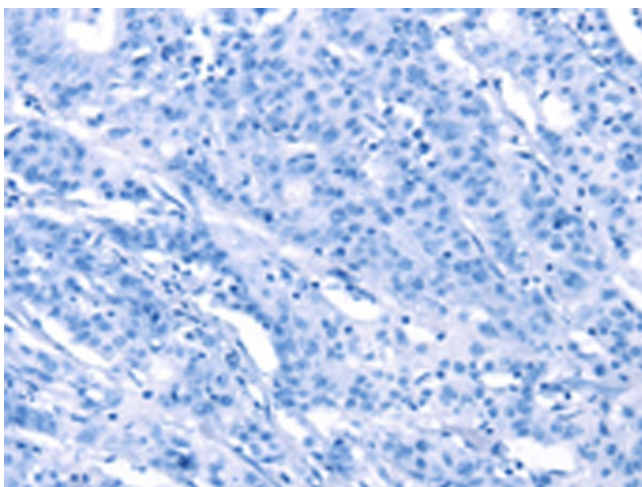
[View online »](#)

Protein Pathways: RIG-I-like receptor signaling pathway

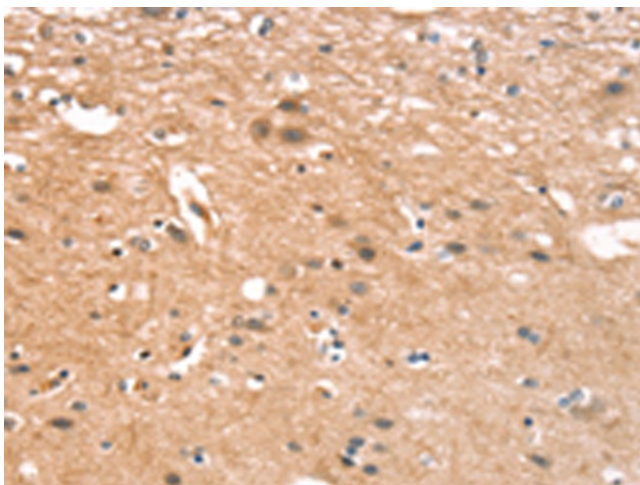
**Product images:**



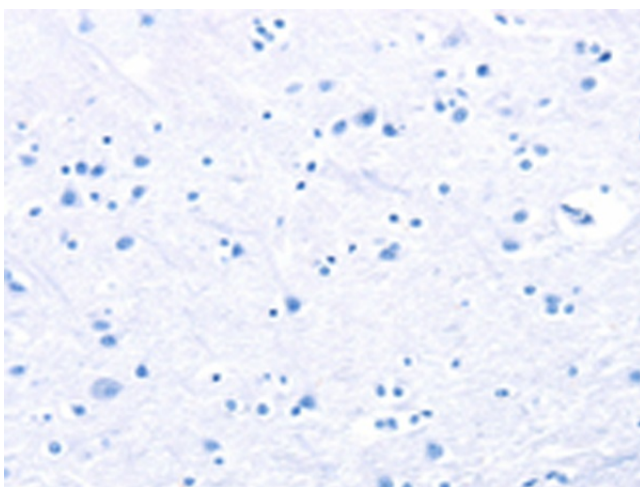
Immunohistochemistry of paraffin-embedded Human gastric cancer tissue using TA351116 (CYLD Antibody) at dilution 1/35 (Original magnification:  $\times 200$ )



Immunohistochemistry of paraffin-embedded Human gastric cancer tissue using TA351116 (CYLD Antibody) at dilution 1/35, treated with synthetic peptide. (Original magnification:  $\times 200$ )



Immunohistochemistry of paraffin-embedded Human brain tissue using TA351116 (CYLD Antibody) at dilution 1/35 (Original magnification: ×200)



Immunohistochemistry of paraffin-embedded Human brain tissue using TA351116 (CYLD Antibody) at dilution 1/35, treated with synthetic peptide. (Original magnification: ×200)