

Product datasheet for **TA351113S**

CTBP2 Rabbit Polyclonal Antibody

Product data:

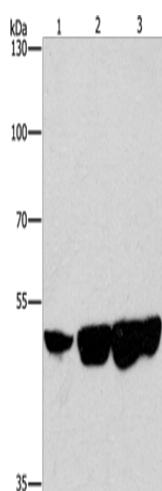
Product Type:	Primary Antibodies
Applications:	IHC, WB
Recommended Dilution:	WB: 500-2000 WB positive control: Hela, hepG2 and 231 cells IHC: 50-200 Positive control: Human ovarian cancer Predicted cell location: Nucleus
Reactivity:	Human, Mouse, Rat
Host:	Rabbit
Isotype:	IgG
Clonality:	Polyclonal
Immunogen:	Synthetic peptide of human CTBP2
Formulation:	pH7.4 PBS, 0.05% NaN ₃ , 40% Glycerol
Purification:	Antigen affinity purification
Conjugation:	Unconjugated
Storage:	Store at -20°C as received.
Stability:	Stable for 12 months from date of receipt.
Predicted Protein Size:	49 kDa
Gene Name:	C-terminal binding protein 2
Database Link:	NP_073713 Entrez Gene 13017 Mouse Entrez Gene 81717 Rat Entrez Gene 1488 Human P56545



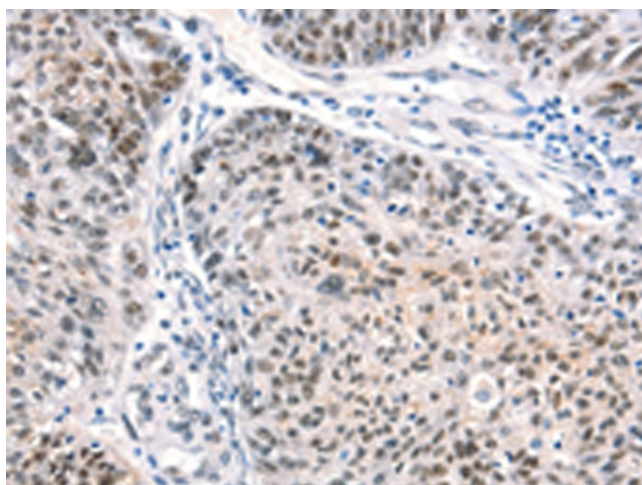
[View online »](#)

- Background:** This gene produces alternative transcripts encoding two distinct proteins. One protein is a transcriptional repressor, while the other isoform is a major component of specialized synapses known as synaptic ribbons. Both proteins contain a NAD⁺ binding domain similar to NAD⁺-dependent 2-hydroxyacid dehydrogenases. A portion of the 3' untranslated region was used to map this gene to chromosome 21q21.3; however, it was noted that similar loci elsewhere in the genome are likely. Blast analysis shows that this gene is present on chromosome 10.
- Synonyms:** C-terminal binding protein 2; OTTHUMP00000020699; OTTHUMP00000020701; ribeye
- Protein Families:** Stem cell - Pluripotency, Stem cell relevant signaling - Wnt Signaling pathway
- Protein Pathways:** Chronic myeloid leukemia, Notch signaling pathway, Pathways in cancer, Wnt signaling pathway

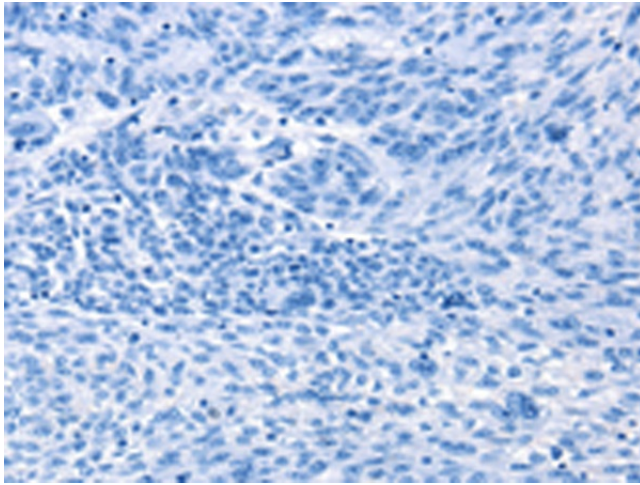
Product images:



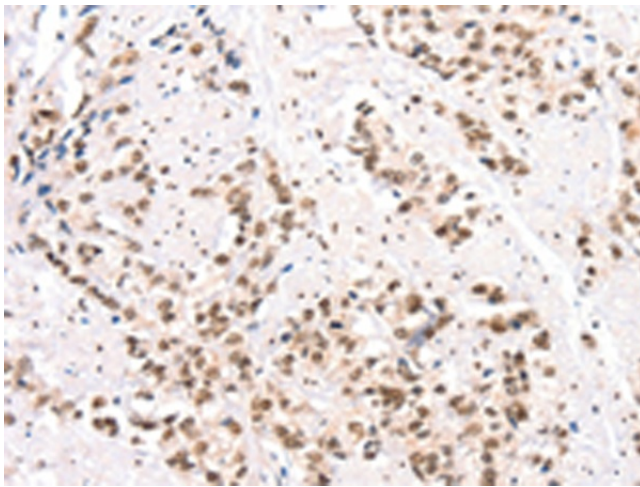
Gel: 8%SDS-PAGE
Lysate: 40 µg
Lane 1-3: HeLa cells
HepG2 cells
231 cells
Primary antibody: [TA351113] (CTBP2 Antibody)
at dilution 1/400
Secondary antibody: Goat anti rabbit IgG at
1/8000 dilution
Exposure time: 3 minutes



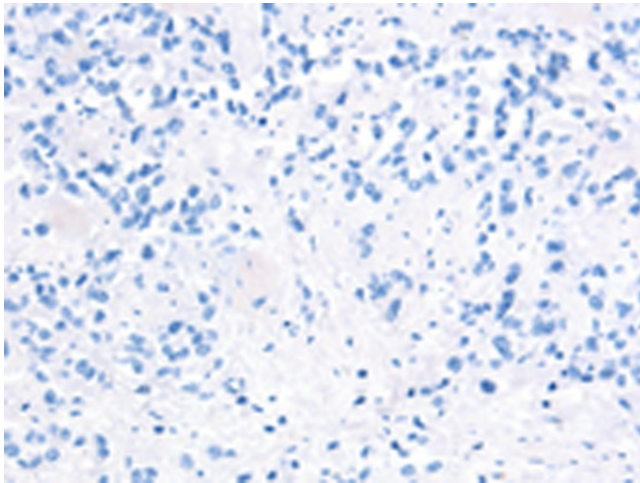
Immunohistochemistry of paraffin-embedded
Human ovarian cancer tissue using [TA351113]
(CTBP2 Antibody) at dilution 1/40 (Original
magnification: ×200)



Immunohistochemistry of paraffin-embedded Human ovarian cancer tissue using [TA351113] (CTBP2 Antibody) at dilution 1/40, treated with synthetic peptide. (Original magnification: ×200)



Immunohistochemistry of paraffin-embedded Human prostate cancer tissue using [TA351113] (CTBP2 Antibody) at dilution 1/40 (Original magnification: ×200)



Immunohistochemistry of paraffin-embedded Human prostate cancer tissue using [TA351113] (CTBP2 Antibody) at dilution 1/40, treated with synthetic peptide. (Original magnification: ×200)