

## Product datasheet for **TA351109S**

### NLRP3 Rabbit Polyclonal Antibody

#### Product data:

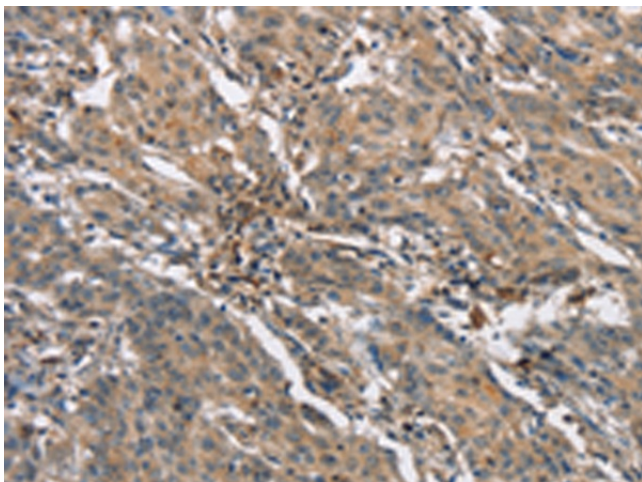
Product Type:	Primary Antibodies
Applications:	IHC
Recommended Dilution:	IHC: 25-100 Positive control: Human gastric cancer Predicted cell location: Cytoplasm
Reactivity:	Human, Mouse
Host:	Rabbit
Isotype:	IgG
Clonality:	Polyclonal
Immunogen:	Synthetic peptide of human NLRP3
Formulation:	pH7.4 PBS, 0.05% NaN <sub>3</sub> , 40% Glycerol
Purification:	Antigen affinity purification
Conjugation:	Unconjugated
Storage:	Store at -20°C as received.
Stability:	Stable for 12 months from date of receipt.
Gene Name:	NLR family, pyrin domain containing 3
Database Link:	<a href="#">NP_004886</a> <a href="#">Entrez Gene 216799 Mouse</a> <a href="#">Entrez Gene 114548 Human</a> <a href="#">Q96P20</a>

**Background:** This gene encodes a pyrin-like protein containing a pyrin domain, a nucleotide-binding site (NBS) domain, and a leucine-rich repeat (LRR) motif. This protein interacts with the apoptosis-associated speck-like protein PYCARD/ASC, which contains a caspase recruitment domain, and is a member of the NALP3 inflammasome complex. This complex functions as an upstream activator of NF-kappaB signaling, and it plays a role in the regulation of inflammation, the immune response, and apoptosis. Mutations in this gene are associated with familial cold autoinflammatory syndrome (FCAS), Muckle-Wells syndrome (MWS), chronic infantile neurological cutaneous and articular (CINCA) syndrome, and neonatal-onset multisystem inflammatory disease (NOMID).

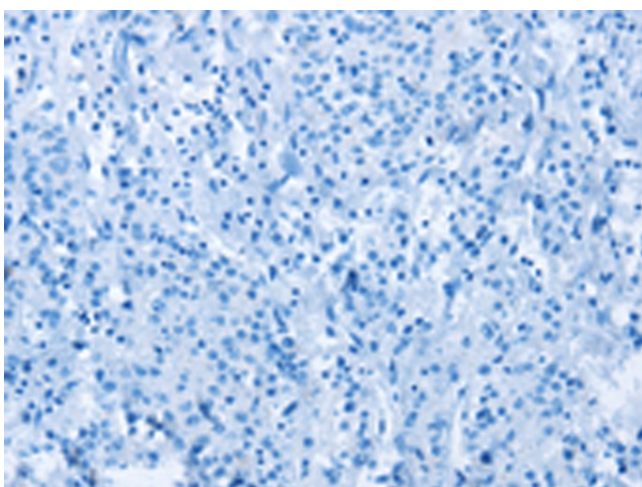


[View online »](#)

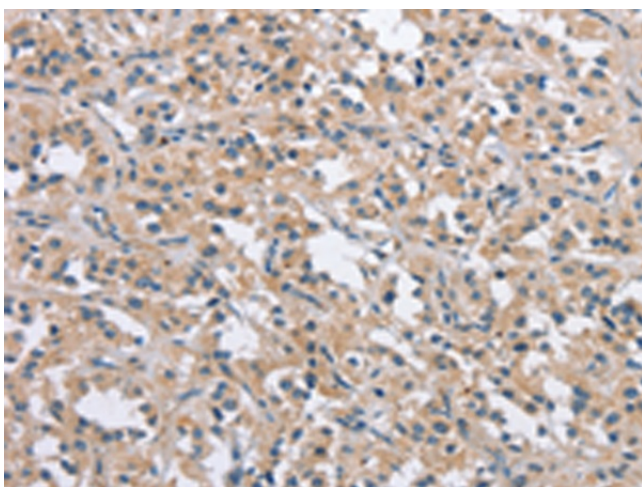
**Synonyms:** AGTAVPRL; All; AVP; C1orf7; CIAS1; CLR1.1; FCAS; FCAS1; FCU; MWS; NALP3; PYPAF1  
**Protein Families:** Druggable Genome  
**Protein Pathways:** NOD-like receptor signaling pathway

**Product images:**

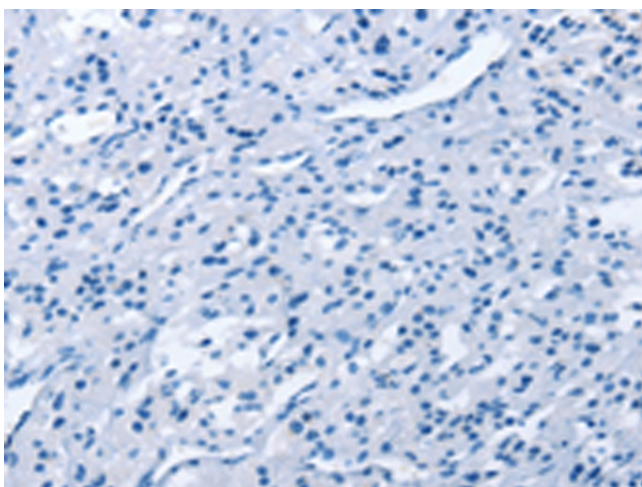
Immunohistochemistry of paraffin-embedded Human gastric cancer tissue using [TA351109] (NLRP3 Antibody) at dilution 1/25 (Original magnification:  $\times 200$ )



Immunohistochemistry of paraffin-embedded Human gastric cancer tissue using [TA351109] (NLRP3 Antibody) at dilution 1/25, treated with synthetic peptide. (Original magnification:  $\times 200$ )



Immunohistochemistry of paraffin-embedded Human thyroid cancer tissue using [TA351109] (NLRP3 Antibody) at dilution 1/25 (Original magnification:  $\times 200$ )



Immunohistochemistry of paraffin-embedded Human thyroid cancer tissue using [TA351109] (NLRP3 Antibody) at dilution 1/25, treated with synthetic peptide. (Original magnification:  $\times 200$ )