

Product datasheet for **TA351107S**

CRLR (CALCRL) Rabbit Polyclonal Antibody

Product data:

Product Type:	Primary Antibodies
Applications:	IHC, WB
Recommended Dilution:	WB: 500-2000 WB positive control: A549 and HUVEC cell lysates IHC: 50-100 Positive control: Human colorectal cancer Predicted cell location: Cytoplasm
Reactivity:	Human
Host:	Rabbit
Isotype:	IgG
Clonality:	Polyclonal
Immunogen:	Synthetic peptide of human CALCRL
Formulation:	pH7.4 PBS, 0.05% NaN ₃ , 40% Glycerol
Purification:	Antigen affinity purification
Conjugation:	Unconjugated
Storage:	Store at -20°C as received.
Stability:	Stable for 12 months from date of receipt.
Predicted Protein Size:	53 kDa
Gene Name:	calcitonin receptor like receptor
Database Link:	NP_005786 Entrez Gene 10203 Human Q16602

Background: Calcitonin receptor-like (CALCRL), also known as the calcitonin receptor-like receptor (CRLR), is a human protein. The protein encoded by the CALCRL gene is a G protein-coupled receptor related to the calcitonin receptor. CALCRL is linked to one of three single transmembrane domain receptor activity-modifying proteins (RAMPs) that are essential for functional activity

Synonyms: CGRPR; CRLR

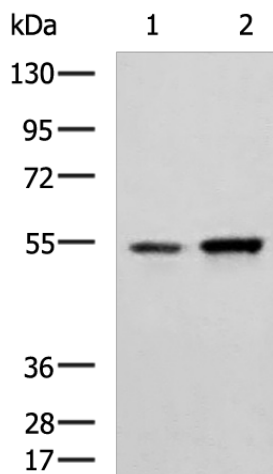
Protein Families: Druggable Genome, GPCR, Transmembrane



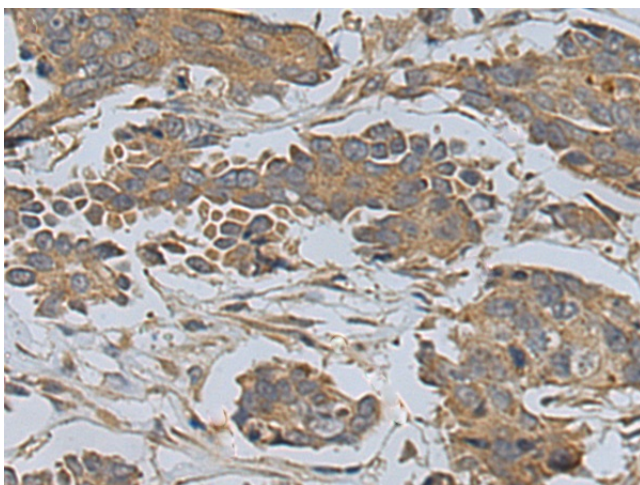
[View online »](#)

Protein Pathways: Neuroactive ligand-receptor interaction, Vascular smooth muscle contraction

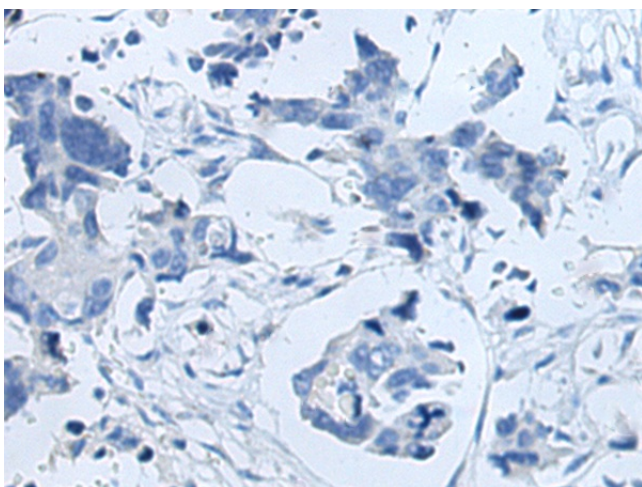
Product images:



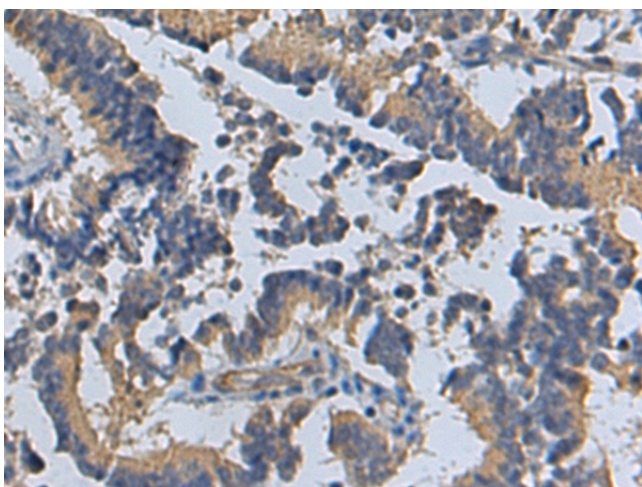
Gel: 8%SDS-PAGE
Lysate: 40 μ g
Lane 1-2: A549 and HUVEC cell lysates
Primary antibody: [TA351107] (CALCRL Antibody)
at dilution 1/400
Secondary antibody: Goat anti rabbit IgG at
1/5000 dilution
Exposure time: 2 minutes



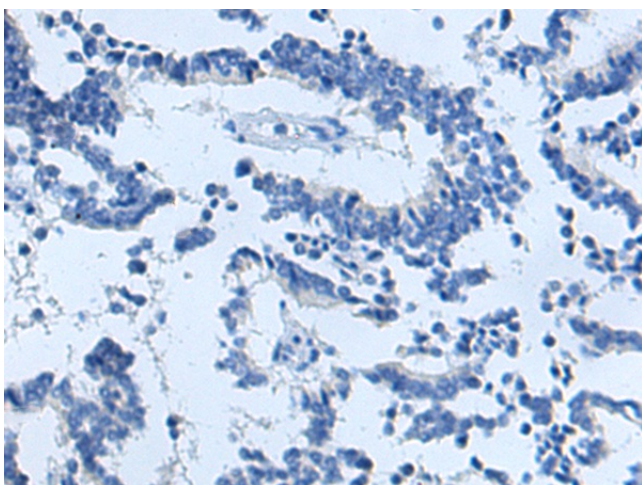
Immunohistochemistry of paraffin-embedded
Human colorectal cancer tissue using [TA351107]
(CALCRL Antibody) at dilution 1/30 (Original
magnification: $\times 200$)



Immunohistochemistry of paraffin-embedded Human colorectal cancer tissue using [TA351107] (CALCRL Antibody) at dilution 1/30, treated with synthetic peptide. (Original magnification: ×200)



Immunohistochemistry of paraffin-embedded Human liver cancer tissue using [TA351107] (CALCRL Antibody) at dilution 1/30 (Original magnification: ×200)



Immunohistochemistry of paraffin-embedded Human liver cancer tissue using [TA351107] (CALCRL Antibody) at dilution 1/30, treated with synthetic peptide. (Original magnification: ×200)