

## Product datasheet for **TA351102S**

### Corticotropin Releasing Factor Receptor 2 (CRHR2) Rabbit Polyclonal Antibody

#### Product data:

Product Type:	Primary Antibodies
Applications:	IHC, WB
Recommended Dilution:	WB: 200-1000 WB positive control: NIH/3T3 cells and mouse brain tissue IHC: 25-100 Positive control: Human liver cancer Predicted cell location: Cytoplasm
Reactivity:	Human, Mouse, Rat
Host:	Rabbit
Isotype:	IgG
Clonality:	Polyclonal
Immunogen:	Synthetic peptide of human CRHR2
Formulation:	pH7.4 PBS, 0.05% NaN <sub>3</sub> , 40% Glycerol
Purification:	Antigen affinity purification
Conjugation:	Unconjugated
Storage:	Store at -20°C as received.
Stability:	Stable for 12 months from date of receipt.
Predicted Protein Size:	48 kDa
Gene Name:	corticotropin releasing hormone receptor 2
Database Link:	<a href="#">NP_001874</a> <a href="#">Entrez Gene 12922 MouseEntrez Gene 64680 RatEntrez Gene 1395 Human Q13324</a>



[View online »](#)

**Background:**

The protein encoded by this gene belongs to the G-protein coupled receptor 2 family, and the subfamily of corticotropin releasing hormone receptor. This receptor shows high affinity for corticotropin releasing hormone (CRH), and also binds CRH-related peptides such as urocortin. CRH is synthesized in the hypothalamus, and plays an important role in coordinating the endocrine, autonomic, and behavioral responses to stress and immune challenge. Studies in mice suggest that this receptor maybe involved in mediating cardiovascular homeostasis. Alternatively spliced transcript variants encoding different isoforms have been described for this gene.

**Synonyms:**

CRF-RB; CRF2; CRFR2; HM-CRF

**Protein Families:**

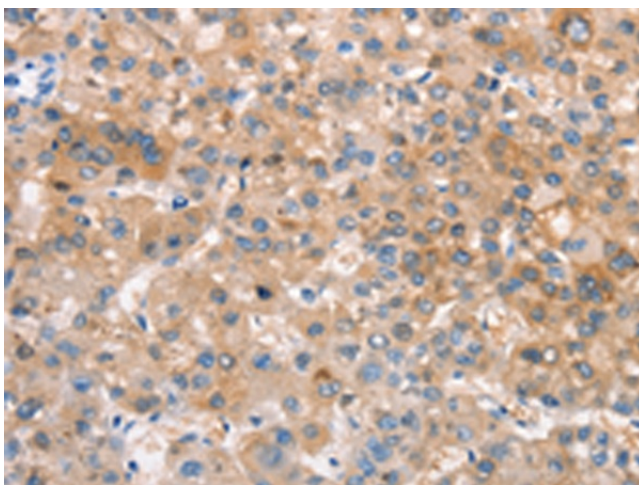
Druggable Genome, Transmembrane

**Protein Pathways:**

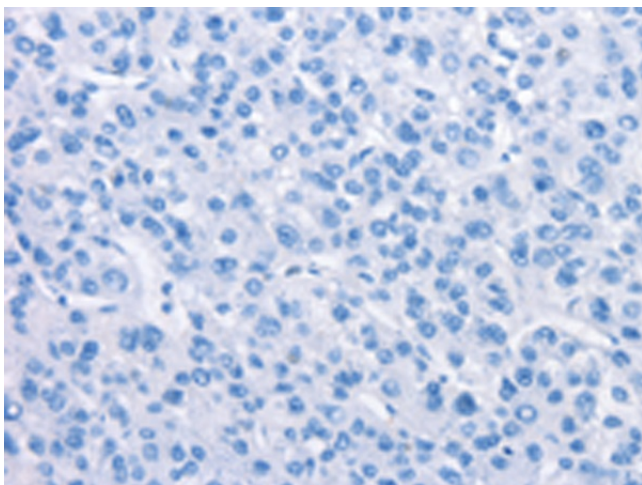
Neuroactive ligand-receptor interaction

**Product images:**

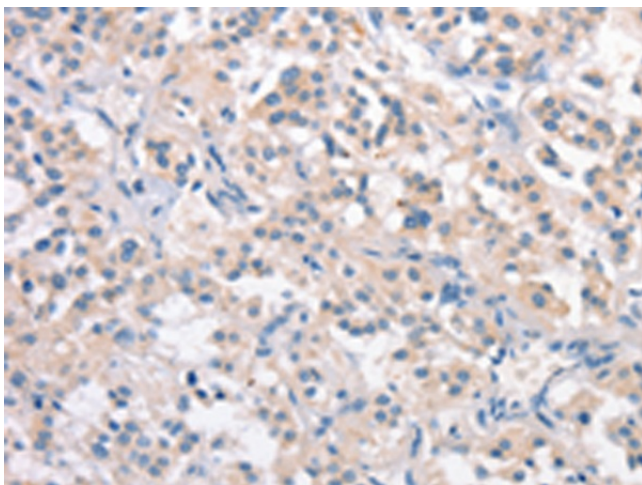

Gel: 8%SDS-PAGE  
 Lysate: 40 µg  
 Lane 1-2: NIH/3T3 cells  
 mouse brain tissue  
 Primary antibody: [TA351102] (CRHR2 Antibody)  
 at dilution 1/650  
 Secondary antibody: Goat anti rabbit IgG at  
 1/8000 dilution  
 Exposure time: 10 minutes



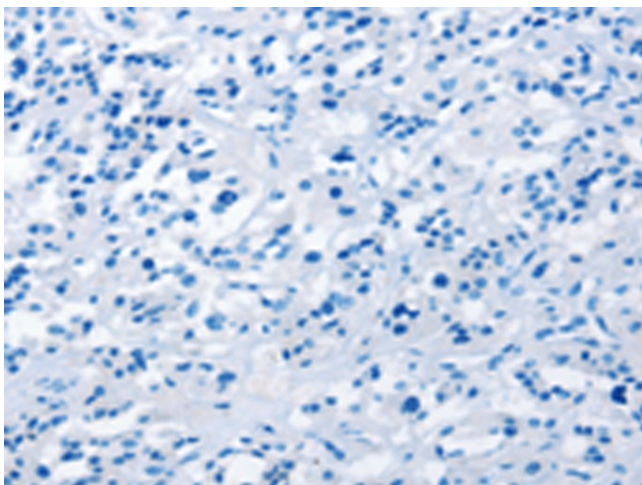
Immunohistochemistry of paraffin-embedded  
 Human liver cancer tissue using [TA351102]  
 (CRHR2 Antibody) at dilution 1/25 (Original  
 magnification: ×200)



Immunohistochemistry of paraffin-embedded Human liver cancer tissue using [TA351102] (CRHR2 Antibody) at dilution 1/25, treated with synthetic peptide. (Original magnification:  $\times 200$ )



Immunohistochemistry of paraffin-embedded Human thyroid cancer tissue using [TA351102] (CRHR2 Antibody) at dilution 1/25 (Original magnification:  $\times 200$ )



Immunohistochemistry of paraffin-embedded Human thyroid cancer tissue using [TA351102] (CRHR2 Antibody) at dilution 1/25, treated with synthetic peptide. (Original magnification:  $\times 200$ )