

## Product datasheet for **TA351102**

### Corticotropin Releasing Factor Receptor 2 (CRHR2) Rabbit Polyclonal Antibody

#### Product data:

Product Type:	Primary Antibodies
Applications:	IHC, WB
Recommended Dilution:	WB: 200-1000 WB positive control: NIH/3T3 cells and mouse brain tissue IHC: 25-100 Positive control: Human liver cancer Predicted cell location: Cytoplasm
Reactivity:	Human, Mouse, Rat
Host:	Rabbit
Isotype:	IgG
Clonality:	Polyclonal
Immunogen:	Synthetic peptide of human CRHR2
Formulation:	pH7.4 PBS, 0.05% NaN <sub>3</sub> , 40% Glycerol
Concentration:	lot specific
Purification:	Antigen affinity purification
Conjugation:	Unconjugated
Storage:	Store at -20°C as received.
Stability:	Stable for 12 months from date of receipt.
Predicted Protein Size:	48 kDa
Gene Name:	corticotropin releasing hormone receptor 2
Database Link:	<a href="#">NP_001874</a> <a href="#">Entrez Gene 12922 Mouse</a> <a href="#">Entrez Gene 64680 Rat</a> <a href="#">Entrez Gene 1395 Human</a> <a href="#">Q13324</a>



[View online »](#)

**Background:**

The protein encoded by this gene belongs to the G-protein coupled receptor 2 family, and the subfamily of corticotropin releasing hormone receptor. This receptor shows high affinity for corticotropin releasing hormone (CRH), and also binds CRH-related peptides such as urocortin. CRH is synthesized in the hypothalamus, and plays an important role in coordinating the endocrine, autonomic, and behavioral responses to stress and immune challenge. Studies in mice suggest that this receptor maybe involved in mediating cardiovascular homeostasis. Alternatively spliced transcript variants encoding different isoforms have been described for this gene.

**Synonyms:**

CRF-RB; CRF2; CRFR2; HM-CRF

**Protein Families:**

Druggable Genome, Transmembrane

**Protein Pathways:**

Neuroactive ligand-receptor interaction

**Product images:**


Gel: 8%SDS-PAGE

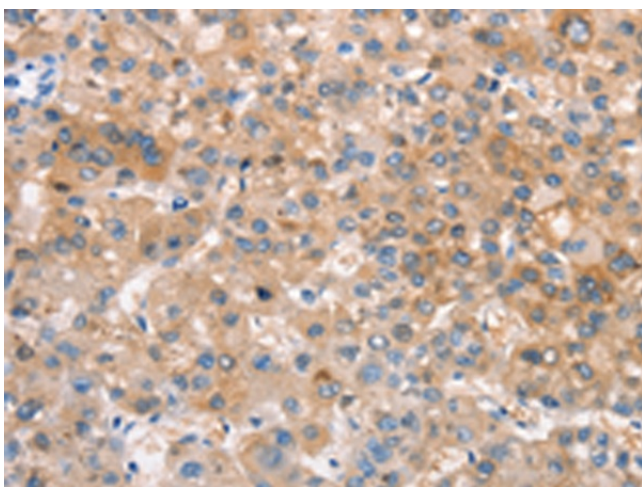
Lysate: 40 µg

Lane 1-2: NIH/3T3 cells  
mouse brain tissue

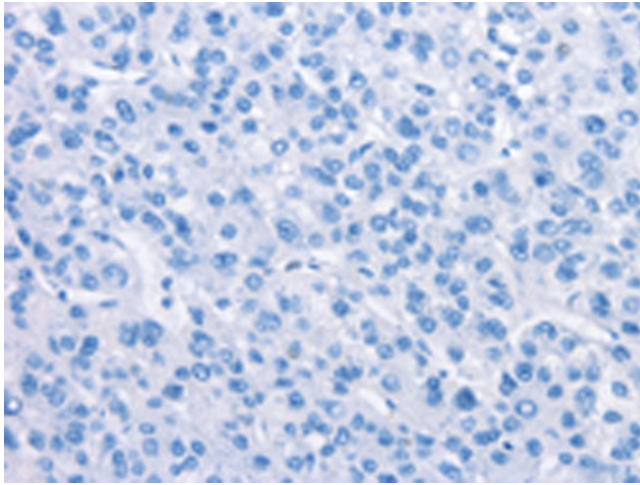
Primary antibody: TA351102 (CRHR2 Antibody) at  
dilution 1/650

Secondary antibody: Goat anti rabbit IgG at  
1/8000 dilution

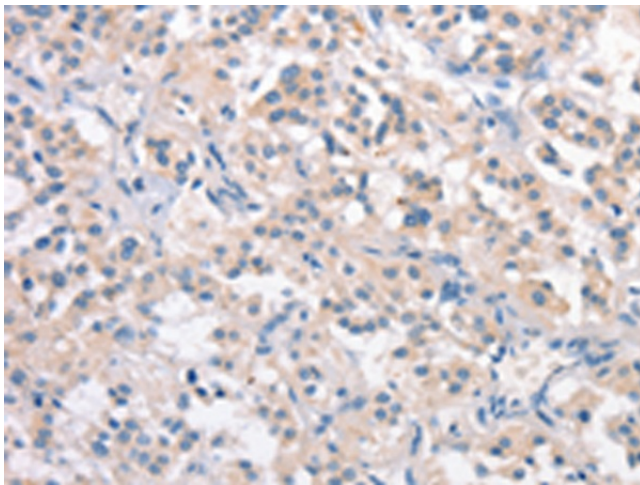
Exposure time: 10 minutes



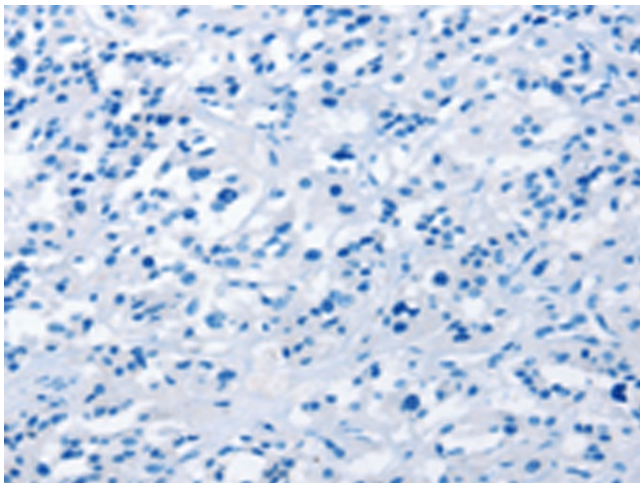
Immunohistochemistry of paraffin-embedded  
Human liver cancer tissue using TA351102  
(CRHR2 Antibody) at dilution 1/25 (Original  
magnification: ×200)



Immunohistochemistry of paraffin-embedded Human liver cancer tissue using TA351102 (CRHR2 Antibody) at dilution 1/25, treated with synthetic peptide. (Original magnification: ×200)



Immunohistochemistry of paraffin-embedded Human thyroid cancer tissue using TA351102 (CRHR2 Antibody) at dilution 1/25 (Original magnification: ×200)



Immunohistochemistry of paraffin-embedded Human thyroid cancer tissue using TA351102 (CRHR2 Antibody) at dilution 1/25, treated with synthetic peptide. (Original magnification: ×200)