

## Product datasheet for **TA351100S**

### CRELD1 Rabbit Polyclonal Antibody

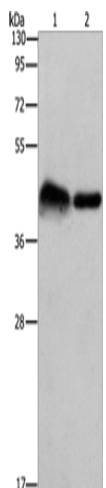
#### Product data:

Product Type:	Primary Antibodies
Applications:	IHC, WB
Recommended Dilution:	WB: 500-2000 WB positive control: Mouse bladder tissue and 293T cells IHC: 50-200 Positive control: Human thyroid cancer Predicted cell location: Cytoplasm
Reactivity:	Human, Mouse, Rat
Host:	Rabbit
Isotype:	IgG
Clonality:	Polyclonal
Immunogen:	Synthetic peptide of human CRELD1
Formulation:	pH7.4 PBS, 0.05% NaN <sub>3</sub> , 40% Glycerol
Purification:	Antigen affinity purification
Conjugation:	Unconjugated
Storage:	Store at -20°C as received.
Stability:	Stable for 12 months from date of receipt.
Predicted Protein Size:	45 kDa
Gene Name:	cysteine rich with EGF like domains 1
Database Link:	<a href="#">NP_056328</a> <a href="#">Entrez Gene 171508</a> <a href="#">MouseEntrez Gene 312638</a> <a href="#">RatEntrez Gene 78987</a> <a href="#">Human Q96HD1</a>
Background:	This gene encodes a member of a subfamily of epidermal growth factor-related proteins. The encoded protein is characterized by a cysteine-rich with epidermal growth factor-like domain. This protein may function as a cell adhesion molecule. Mutations in this gene are the cause of atrioventricular septal defect. Alternate splicing results in multiple transcript variants.
Synonyms:	AVSD2; CIRRN
Protein Families:	Transmembrane

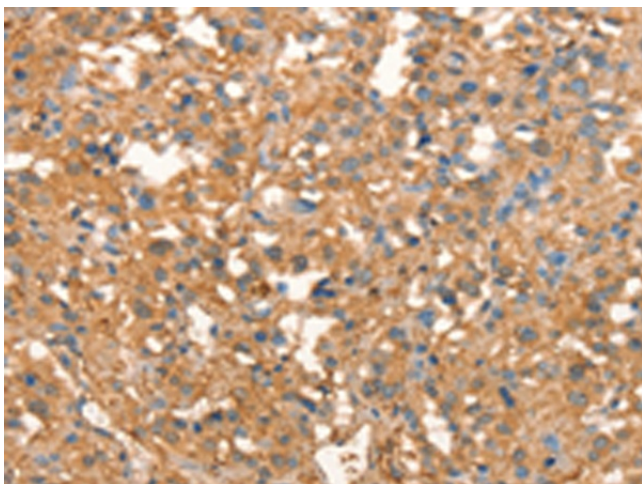


[View online »](#)

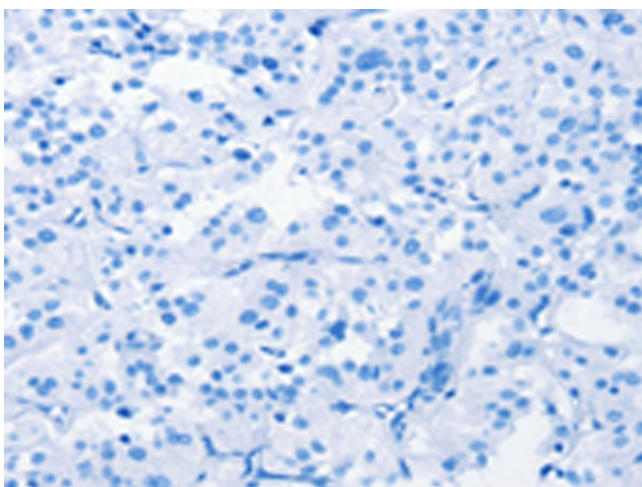
## Product images:



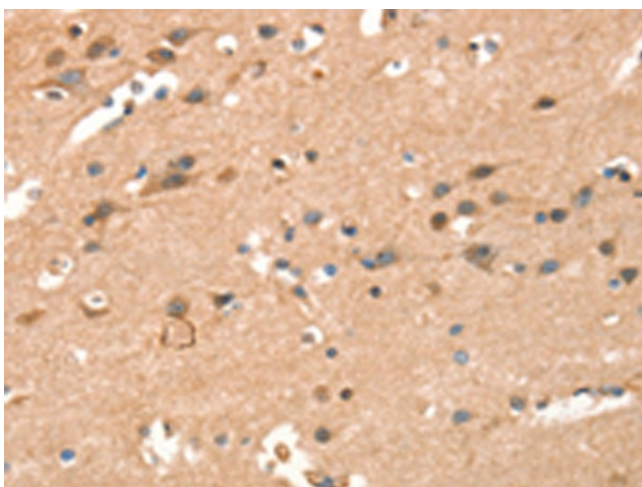
Gel: 10%SDS-PAGE  
Lysate: 40  $\mu$ g  
Lane 1-2: Mouse bladder tissue  
293T cells  
Primary antibody: [TA351100] (CRELD1 Antibody)  
at dilution 1/930  
Secondary antibody: Goat anti rabbit IgG at  
1/8000 dilution  
Exposure time: 5 minutes



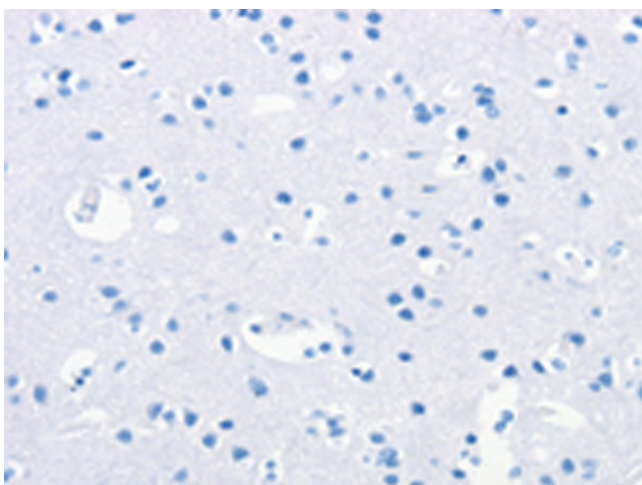
Immunohistochemistry of paraffin-embedded  
Human thyroid cancer tissue using [TA351100]  
(CRELD1 Antibody) at dilution 1/40 (Original  
magnification:  $\times$ 200)



Immunohistochemistry of paraffin-embedded Human thyroid cancer tissue using [TA351100] (CRELD1 Antibody) at dilution 1/40, treated with synthetic peptide. (Original magnification: ×200)



Immunohistochemistry of paraffin-embedded Human brain tissue using [TA351100] (CRELD1 Antibody) at dilution 1/40 (Original magnification: ×200)



Immunohistochemistry of paraffin-embedded Human brain tissue using [TA351100] (CRELD1 Antibody) at dilution 1/40, treated with synthetic peptide. (Original magnification: ×200)