

Product datasheet for **TA351100**

CRELD1 Rabbit Polyclonal Antibody

Product data:

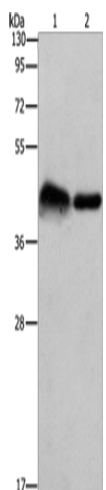
Product Type:	Primary Antibodies
Applications:	IHC, WB
Recommended Dilution:	WB: 500-2000 WB positive control: Mouse bladder tissue and 293T cells IHC: 50-200 Positive control: Human thyroid cancer Predicted cell location: Cytoplasm
Reactivity:	Human, Mouse, Rat
Host:	Rabbit
Isotype:	IgG
Clonality:	Polyclonal
Immunogen:	Synthetic peptide of human CRELD1
Formulation:	pH7.4 PBS, 0.05% NaN ₃ , 40% Glycerol
Concentration:	lot specific
Purification:	Antigen affinity purification
Conjugation:	Unconjugated
Storage:	Store at -20°C as received.
Stability:	Stable for 12 months from date of receipt.
Predicted Protein Size:	45 kDa
Gene Name:	cysteine rich with EGF like domains 1
Database Link:	NP_056328 Entrez Gene 171508 Mouse Entrez Gene 312638 Rat Entrez Gene 78987 Human Q96HD1
Background:	This gene encodes a member of a subfamily of epidermal growth factor-related proteins. The encoded protein is characterized by a cysteine-rich with epidermal growth factor-like domain. This protein may function as a cell adhesion molecule. Mutations in this gene are the cause of atrioventricular septal defect. Alternate splicing results in multiple transcript variants.
Synonyms:	AVSD2; CIRRN



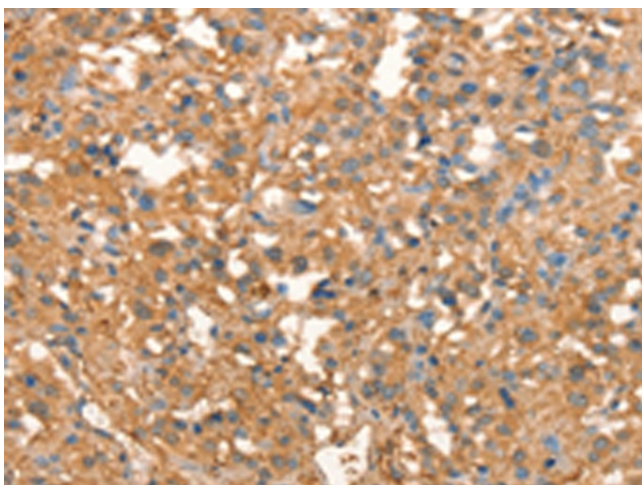
[View online »](#)

Protein Families: Transmembrane

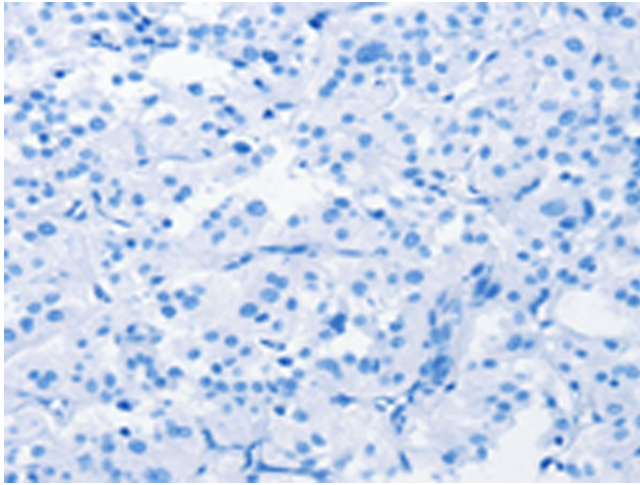
Product images:



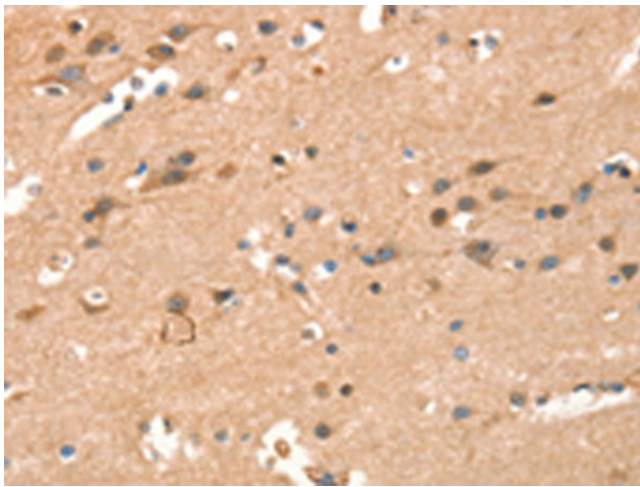
Gel: 10%SDS-PAGE
Lysate: 40 μ g
Lane 1-2: Mouse bladder tissue
293T cells
Primary antibody: TA351100 (CRELD1 Antibody)
at dilution 1/930
Secondary antibody: Goat anti rabbit IgG at
1/8000 dilution
Exposure time: 5 minutes



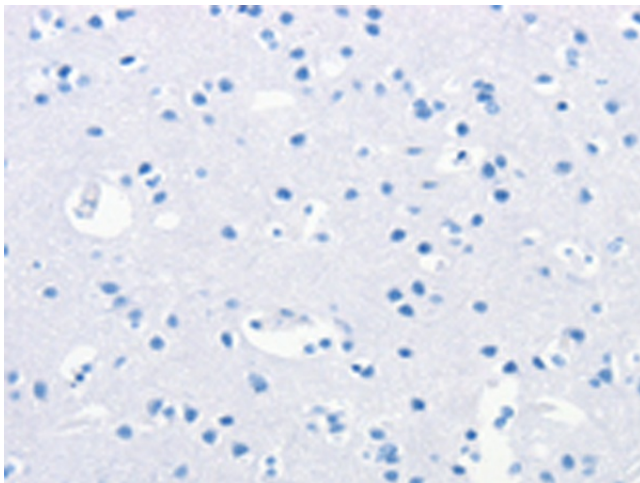
Immunohistochemistry of paraffin-embedded
Human thyroid cancer tissue using TA351100
(CRELD1 Antibody) at dilution 1/40 (Original
magnification: \times 200)



Immunohistochemistry of paraffin-embedded Human thyroid cancer tissue using TA351100 (CRELD1 Antibody) at dilution 1/40, treated with synthetic peptide. (Original magnification: $\times 200$)



Immunohistochemistry of paraffin-embedded Human brain tissue using TA351100 (CRELD1 Antibody) at dilution 1/40 (Original magnification: $\times 200$)



Immunohistochemistry of paraffin-embedded Human brain tissue using TA351100 (CRELD1 Antibody) at dilution 1/40, treated with synthetic peptide. (Original magnification: $\times 200$)