

Product datasheet for **TA351094**

GJC1 Rabbit Polyclonal Antibody

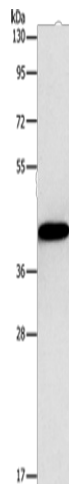
Product data:

Product Type:	Primary Antibodies
Applications:	WB
Recommended Dilution:	WB: 1000-5000 WB positive control: MCF7 cells
Reactivity:	Human, Mouse, Rat
Host:	Rabbit
Isotype:	IgG
Clonality:	Polyclonal
Immunogen:	Synthetic peptide of human GJC1
Formulation:	pH7.4 PBS, 0.05% NaN ₃ , 40% Glycerol
Concentration:	lot specific
Purification:	Antigen affinity purification
Conjugation:	Unconjugated
Storage:	Store at -20°C as received.
Stability:	Stable for 12 months from date of receipt.
Predicted Protein Size:	45 kDa
Gene Name:	gap junction protein gamma 1
Database Link:	NP_005488 Entrez Gene 14615 MouseEntrez Gene 266706 RatEntrez Gene 10052 Human P36383
Background:	This gene is a member of the connexin gene family. The encoded protein is a component of gap junctions, which are composed of arrays of intercellular channels that provide a route for the diffusion of low molecular weight materials from cell to cell. Alternatively spliced transcript variants encoding the same isoform have been described.
Synonyms:	CX45; GJA7
Protein Families:	Ion Channels: Other, Transmembrane



[View online »](#)

Product images:



Gel: 8%SDS-PAGE
Lysate: 40 µg
Lane: MCF7 cells
Primary antibody: TA351094 (GJC1 Antibody) at dilution 1/1250
Secondary antibody: Goat anti rabbit IgG at 1/8000 dilution
Exposure time: 5 seconds