

## Product datasheet for **TA351089**

### CMG1 (IFT74) Rabbit Polyclonal Antibody

#### Product data:

Product Type:	Primary Antibodies
Applications:	IHC
Recommended Dilution:	IHC: 50-200 Positive control: Human liver cancer Predicted cell location: Cytoplasm
Reactivity:	Human
Host:	Rabbit
Isotype:	IgG
Clonality:	Polyclonal
Immunogen:	Synthetic peptide of human IFT74
Formulation:	pH7.4 PBS, 0.05% NaN <sub>3</sub> , 40% Glycerol
Concentration:	lot specific
Purification:	Antigen affinity purification
Conjugation:	Unconjugated
Storage:	Store at -20°C as received.
Stability:	Stable for 12 months from date of receipt.
Gene Name:	intraflagellar transport 74
Database Link:	<a href="#">NP_079379</a> <a href="#">Entrez Gene 80173 Human</a> <a href="#">Q96LB3</a>

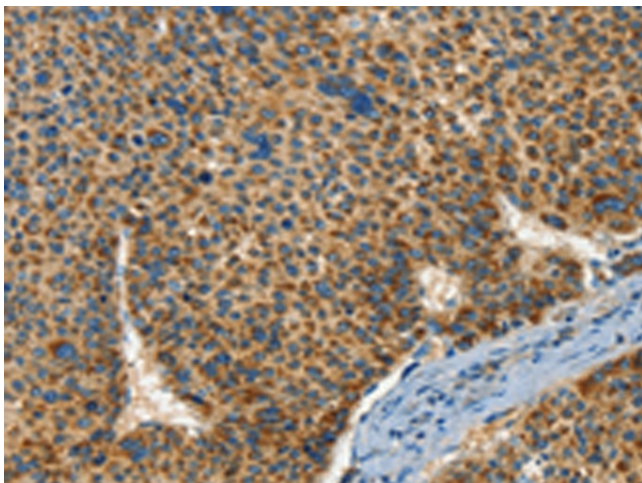
**Background:** Capillary morphogenesis protein 1 (CMG1), also known as intraflagellar transport protein 74 (ITP74) or coiled-coil domain-containing protein 2 (CCDC2), is a 600 amino acid human homologue of IFT-71, a complex B protein supporting intraflagellar transport (IFT) in *Chlamydomonas*. CMG1 localizes to the cytoplasmic vesicle and is highly expressed in adult and fetal kidney and testis, with lower levels of expression in adult heart, placenta, lung, liver and pancreas, and in fetal heart, lung and liver. CMG1 has been suggested to have a role in the primary cilia of HUVEC, and it also functions as a transcriptional regulator of cyclin D2 in spermatocyte-derived cells.



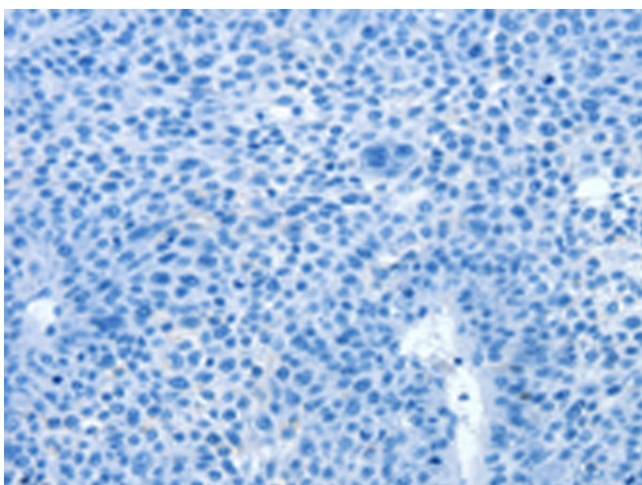
[View online »](#)

Synonyms: BBS20; CCDC2; CMG-1; CMG1

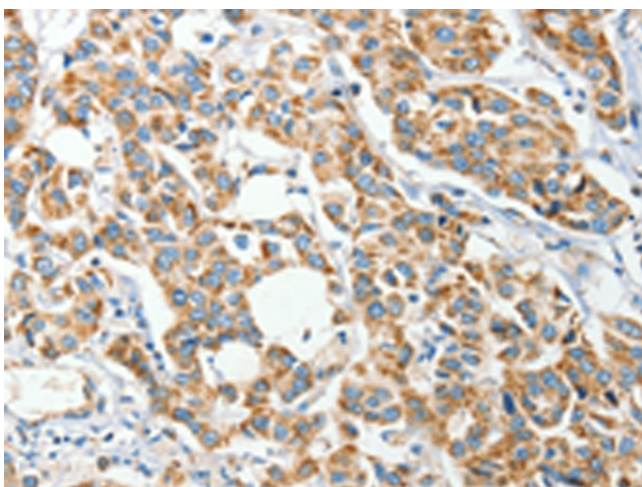
### Product images:



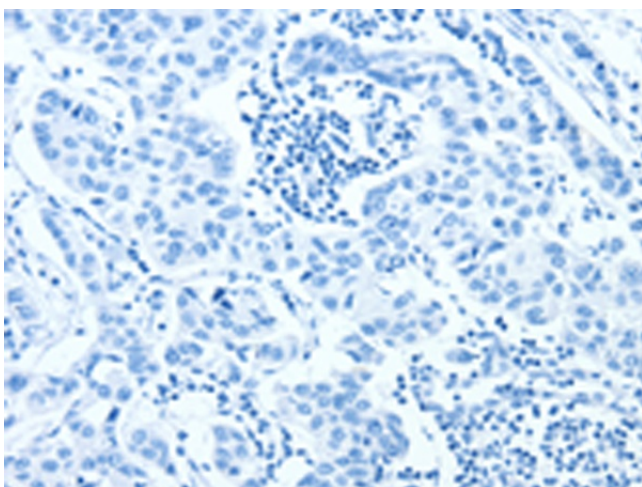
Immunohistochemistry of paraffin-embedded Human liver cancer tissue using TA351089 (IFT74 Antibody) at dilution 1/60 (Original magnification: ×200)



Immunohistochemistry of paraffin-embedded Human liver cancer tissue using TA351089 (IFT74 Antibody) at dilution 1/60, treated with synthetic peptide. (Original magnification: ×200)



Immunohistochemistry of paraffin-embedded Human breast cancer tissue using TA351089 (IFT74 Antibody) at dilution 1/60 (Original magnification:  $\times 200$ )



Immunohistochemistry of paraffin-embedded Human breast cancer tissue using TA351089 (IFT74 Antibody) at dilution 1/60, treated with synthetic peptide. (Original magnification:  $\times 200$ )