

Product datasheet for **TA351085**

CLIC4 Rabbit Polyclonal Antibody

Product data:

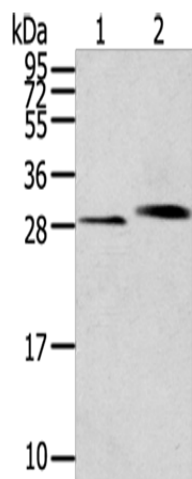
Product Type:	Primary Antibodies
Applications:	WB
Recommended Dilution:	WB: 500-2000 WB positive control: Human normal kidney and liver tissue
Reactivity:	Human, Mouse, Rat
Host:	Rabbit
Isotype:	IgG
Clonality:	Polyclonal
Immunogen:	Synthetic peptide of human CLIC4
Formulation:	pH7.4 PBS, 0.05% NaN ₃ , 40% Glycerol
Concentration:	lot specific
Purification:	Antigen affinity purification
Conjugation:	Unconjugated
Storage:	Store at -20°C as received.
Stability:	Stable for 12 months from date of receipt.
Predicted Protein Size:	29 kDa
Gene Name:	chloride intracellular channel 4
Database Link:	NP_039234 Entrez Gene 29876 Mouse Entrez Gene 83718 Rat Entrez Gene 25932 Human Q9Y696
Background:	Chloride channels are a diverse group of proteins that regulate fundamental cellular processes including stabilization of cell membrane potential, transepithelial transport, maintenance of intracellular pH, and regulation of cell volume. Chloride intracellular channel 4 (CLIC4) protein, encoded by the CLIC4 gene, is a member of the p64 family; the gene is expressed in many tissues and exhibits an intracellular vesicular pattern in Panc-1 cells (pancreatic cancer cells).
Synonyms:	CLIC4L; H1; huH1; MTCLIC; p64H1



[View online »](#)

Protein Families: Druggable Genome, Ion Channels: Other

Product images:



Gel: 12%SDS-PAGE

Lysate: 40 µg

Lane 1-2: Human normal kidney tissue

Human liver tissue

Primary antibody: TA351085 (CLIC4 Antibody) at dilution 1/200

Secondary antibody: Goat anti rabbit IgG at 1/8000 dilution

Exposure time: 10 seconds