

Product datasheet for **TA351082S**

Clathrin heavy chain (CLTC) Rabbit Polyclonal Antibody

Product data:

Product Type:	Primary Antibodies
Applications:	IHC, WB
Recommended Dilution:	WB: 200-1000 WB positive control: NIH/3T3 and hela cells IHC: 50-200 Positive control: Human thyroid cancer Predicted cell location: Cytoplasm
Reactivity:	Human, Mouse, Rat
Host:	Rabbit
Isotype:	IgG
Clonality:	Polyclonal
Immunogen:	Synthetic peptide of human CLTC
Formulation:	pH7.4 PBS, 0.05% NaN ₃ , 40% Glycerol
Purification:	Antigen affinity purification
Conjugation:	Unconjugated
Storage:	Store at -20°C as received.
Stability:	Stable for 12 months from date of receipt.
Predicted Protein Size:	192 kDa
Gene Name:	clathrin heavy chain
Database Link:	NP_004850 Entrez Gene 54241 Rat Entrez Gene 67300 Mouse Entrez Gene 1213 Human Q00610
Background:	Clathrin is a major protein component of the cytoplasmic face of intracellular organelles, called coated vesicles and coated pits. These specialized organelles are involved in the intracellular trafficking of receptors and endocytosis of a variety of macromolecules. The basic subunit of the clathrin coat is composed of three heavy chains and three light chains.
Synonyms:	CHC; CHC17; CLH-17; CLTCL2; Hc
Protein Pathways:	Endocytosis, Huntington's disease, Lysosome



[View online »](#)

Product images:



Gel: 6%SDS-PAGE

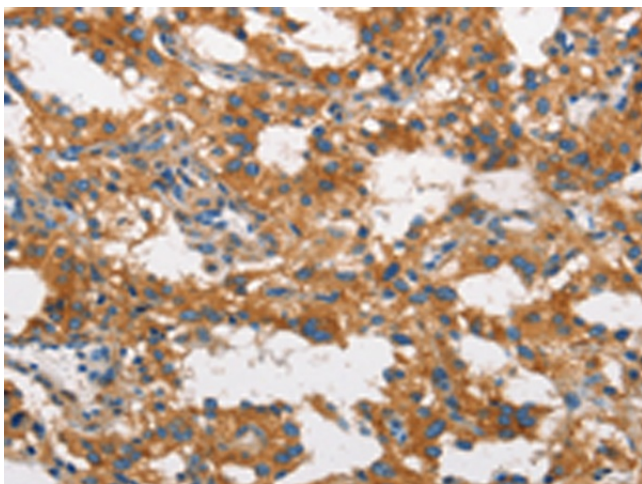
Lysate: 40 μ g

Lane 1-2: NIH/3T3 cells
hela cells

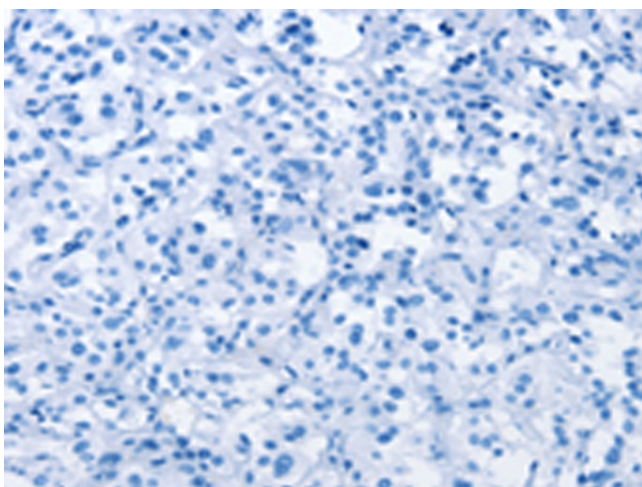
Primary antibody: [TA351082] (CLTC Antibody) at
dilution 1/300

Secondary antibody: Goat anti rabbit IgG at
1/8000 dilution

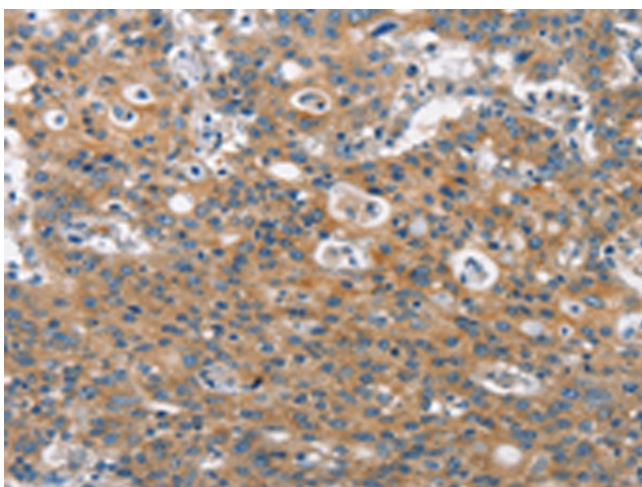
Exposure time: 40 seconds



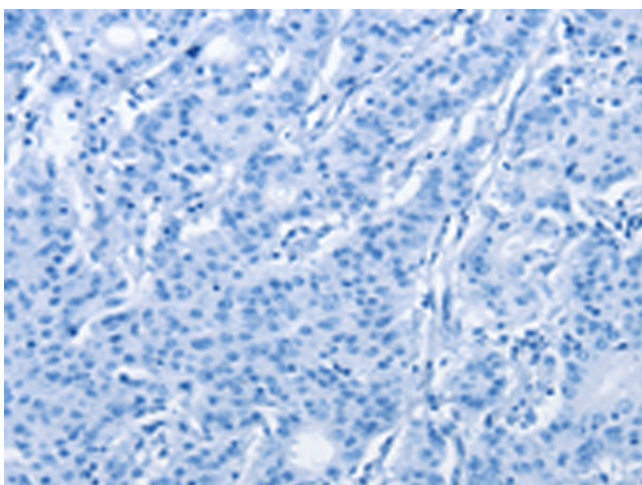
Immunohistochemistry of paraffin-embedded
Human thyroid cancer tissue using [TA351082]
(CLTC Antibody) at dilution 1/60 (Original
magnification: \times 200)



Immunohistochemistry of paraffin-embedded Human thyroid cancer tissue using [TA351082] (CLTC Antibody) at dilution 1/60, treated with synthetic peptide. (Original magnification: $\times 200$)



Immunohistochemistry of paraffin-embedded Human gastric cancer tissue using [TA351082] (CLTC Antibody) at dilution 1/60 (Original magnification: $\times 200$)



Immunohistochemistry of paraffin-embedded Human gastric cancer tissue using [TA351082] (CLTC Antibody) at dilution 1/60, treated with synthetic peptide. (Original magnification: $\times 200$)