

Product datasheet for **TA351081**

CKAP4 Rabbit Polyclonal Antibody

Product data:

Product Type:	Primary Antibodies
Applications:	IHC, WB
Recommended Dilution:	WB: 1000-5000 WB positive control: 293T, hepG2 and A549 cells IHC: 50-200 Positive control: Human lung cancer Predicted cell location: Cytoplasm
Reactivity:	Human, Mouse
Host:	Rabbit
Isotype:	IgG
Clonality:	Polyclonal
Immunogen:	Synthetic peptide of human CKAP4
Formulation:	pH7.4 PBS, 0.05% NaN ₃ , 40% Glycerol
Concentration:	lot specific
Purification:	Antigen affinity purification
Conjugation:	Unconjugated
Storage:	Store at -20°C as received.
Stability:	Stable for 12 months from date of receipt.
Predicted Protein Size:	66 kDa
Gene Name:	cytoskeleton-associated protein 4
Database Link:	NP_006816 Entrez Gene 216197 Mouse Entrez Gene 10970 Human Q07065



[View online »](#)

Background:

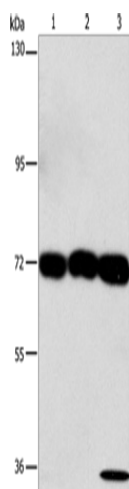
CKAP4 (cytoskeleton-associated protein 4), also known as p63, CLIMP-63 or ERGIC-63, is a 602 amino acid single-pass type II transmembrane protein that links the endoplasmic reticulum (ER) to the cytoskeleton. Considered a novel protein in maintaining ER morphology, CKAP4 anchors the ER to microtubules which is required for maintaining ER spatial distribution during interphase of the cell cycle. CKAP4 can be reversibly palmitoylated and phosphorylated and is a major substrate of the palmitoyl acyltransferase, ZDHHC2.

Synonyms:

CLIMP-63; ERGIC-63; p63

Protein Families:

Druggable Genome, Transmembrane

Product images:

Gel: 6%SDS-PAGE

Lysate: 40 μ g

Lane 1-3: 293T cells

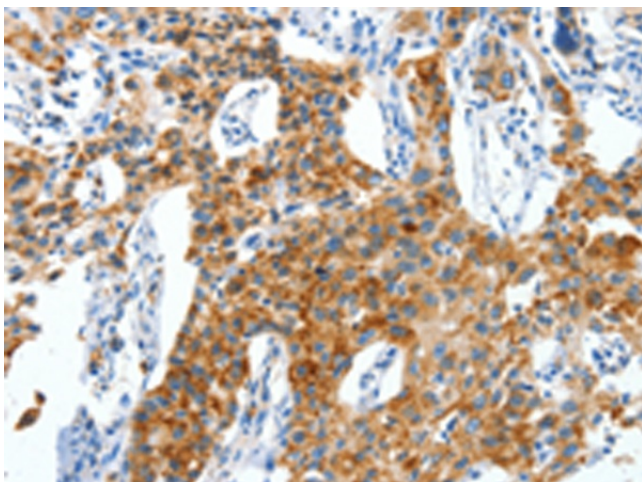
hepG2 cells

A549 cells

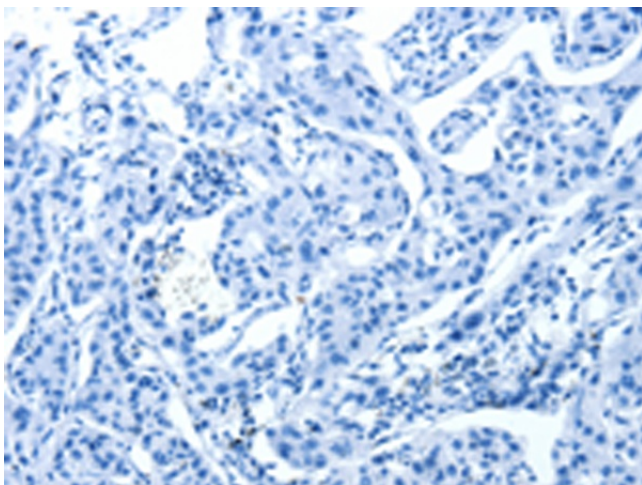
Primary antibody: TA351081 (CKAP4 Antibody) at dilution 1/1250

Secondary antibody: Goat anti rabbit IgG at 1/8000 dilution

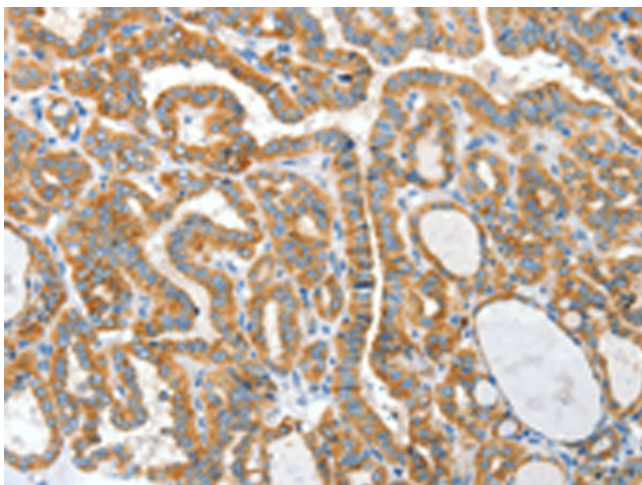
Exposure time: 30 seconds



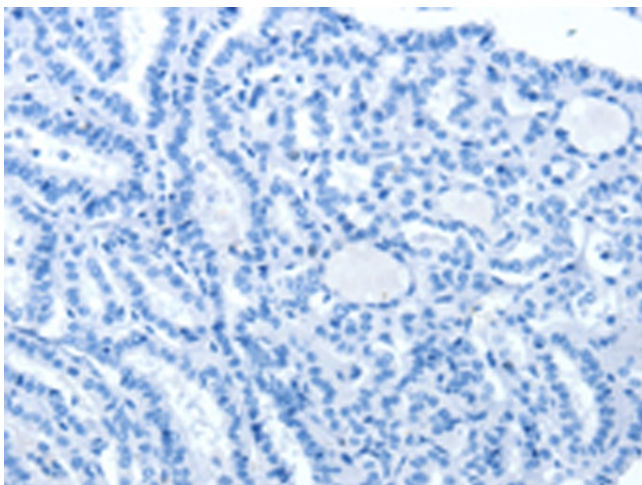
Immunohistochemistry of paraffin-embedded Human lung cancer tissue using TA351081 (CKAP4 Antibody) at dilution 1/50 (Original magnification: \times 200)



Immunohistochemistry of paraffin-embedded Human lung cancer tissue using TA351081 (CKAP4 Antibody) at dilution 1/50, treated with synthetic peptide. (Original magnification: $\times 200$)



Immunohistochemistry of paraffin-embedded Human thyroid cancer tissue using TA351081 (CKAP4 Antibody) at dilution 1/50 (Original magnification: $\times 200$)



Immunohistochemistry of paraffin-embedded Human thyroid cancer tissue using TA351081 (CKAP4 Antibody) at dilution 1/50, treated with synthetic peptide. (Original magnification: $\times 200$)