

## Product datasheet for **TA351078S**

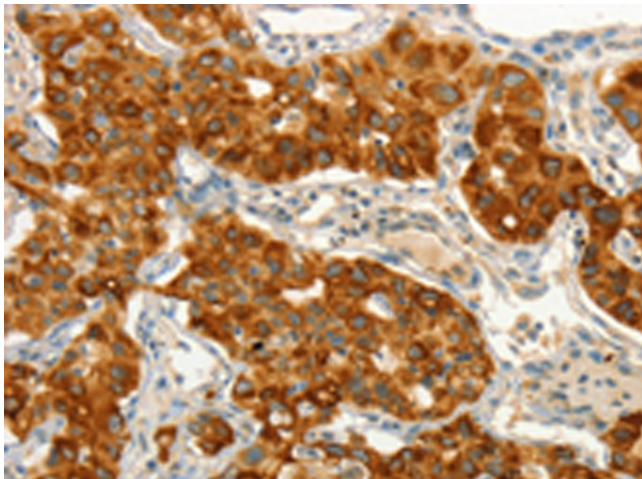
### CIB1 Rabbit Polyclonal Antibody

#### Product data:

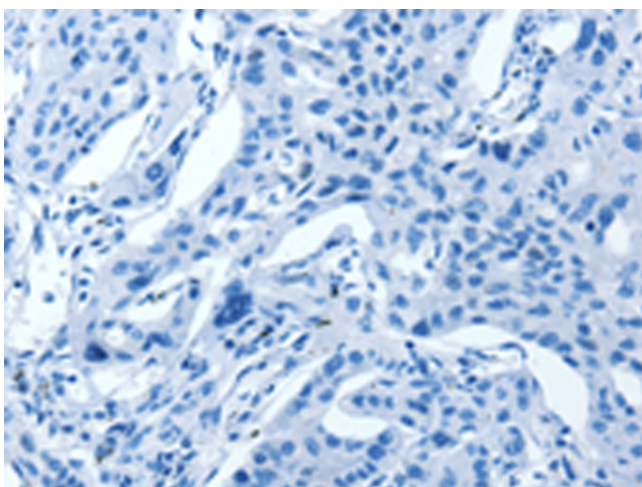
Product Type:	Primary Antibodies
Applications:	IHC
Recommended Dilution:	IHC: 50-200 Positive control: Human lung cancer Predicted cell location: Cytoplasm
Reactivity:	Human, Mouse, Rat
Host:	Rabbit
Isotype:	IgG
Clonality:	Polyclonal
Immunogen:	Synthetic peptide of human CIB1
Formulation:	pH7.4 PBS, 0.05% NaN <sub>3</sub> , 40% Glycerol
Purification:	Antigen affinity purification
Conjugation:	Unconjugated
Storage:	Store at -20°C as received.
Stability:	Stable for 12 months from date of receipt.
Gene Name:	calcium and integrin binding 1
Database Link:	<a href="#">NP_006375</a> <a href="#">Entrez Gene 23991 Mouse</a> <a href="#">Entrez Gene 81823 Rat</a> <a href="#">Entrez Gene 10519 Human</a> <a href="#">Q99828</a>
Background:	This gene encodes a member of the EF-hand domain-containing calcium-binding superfamily. The encoded protein interacts with many other proteins, including the platelet integrin alpha-IIb-beta-3, DNA-dependent protein kinase, presenilin-2, focal adhesion kinase, p21 activated kinase, and protein kinase D. The encoded protein may be involved in cell survival and proliferation, and is associated with several disease states including cancer and Alzheimer's disease. Alternative splicing results in multiple transcript variants.
Synonyms:	CIB; CIBP; KIP1; PRKDCIP; SIP2-28



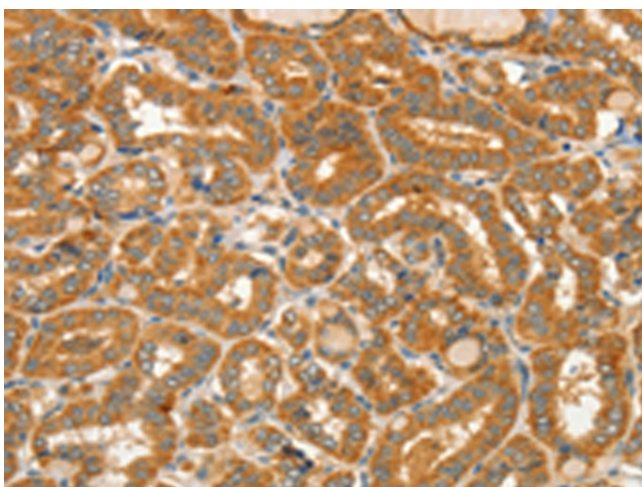
[View online »](#)

**Product images:**

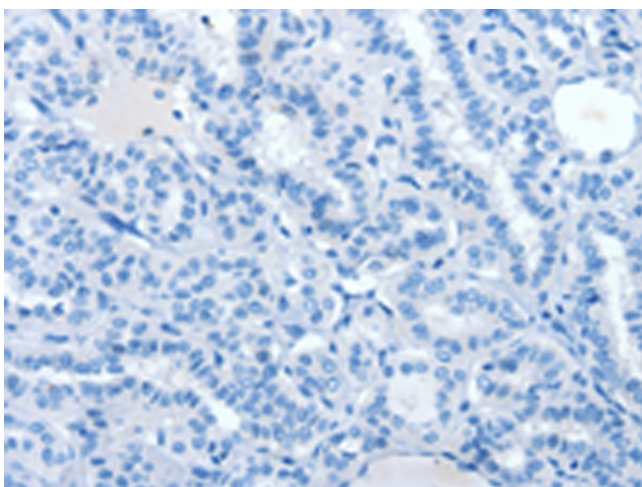
Immunohistochemistry of paraffin-embedded Human lung cancer tissue using [TA351078] (CIB1 Antibody) at dilution 1/50 (Original magnification:  $\times 200$ )



Immunohistochemistry of paraffin-embedded Human lung cancer tissue using [TA351078] (CIB1 Antibody) at dilution 1/50, treated with synthetic peptide. (Original magnification:  $\times 200$ )



Immunohistochemistry of paraffin-embedded Human thyroid cancer tissue using [TA351078] (CIB1 Antibody) at dilution 1/50 (Original magnification:  $\times 200$ )



Immunohistochemistry of paraffin-embedded Human thyroid cancer tissue using [TA351078] (CIB1 Antibody) at dilution 1/50, treated with synthetic peptide. (Original magnification:  $\times 200$ )