

Product datasheet for **TA351076**

CHRDL2 Rabbit Polyclonal Antibody

Product data:

Product Type:	Primary Antibodies
Applications:	IHC, WB
Recommended Dilution:	WB: 500-2000 WB positive control: Human fetal brain tissue IHC: 25-100 Positive control: Human thyroid cancer Predicted cell location: Cytoplasm
Reactivity:	Human
Host:	Rabbit
Isotype:	IgG
Clonality:	Polyclonal
Immunogen:	Synthetic peptide of human CHRDL2
Formulation:	pH7.4 PBS, 0.05% NaN ₃ , 40% Glycerol
Concentration:	lot specific
Purification:	Antigen affinity purification
Conjugation:	Unconjugated
Storage:	Store at -20°C as received.
Stability:	Stable for 12 months from date of receipt.
Predicted Protein Size:	48 kDa
Gene Name:	chordin-like 2
Database Link:	NP_056239 Entrez Gene 25884 Human Q6WN34



[View online »](#)

Background:

CHRDL2 (chordin-related protein 2), also known as BNF1 (breast tumor novel factor 1) or CHL2 (chordin-like 2), is a 429 amino acid protein that belongs to the chordin family of proteins. CHRDL2 contains three VWFC (von Willebrand Factor type C) domains and is predominantly expressed in uterus and moderately expressed in prostate, liver, ovary, heart and testis. Due to alternative splicing events, CHRDL2 exists as five isoforms, namely isoform I, isoform II, isoform VII, isoform VIII and isoform IX. Two of these isoforms are secreted, while the other three localize to the cytoplasm. Functioning as a BMP-binding inhibitor, CHRDL2 directly interacts with BMPs and blocks their binding to BMP receptors, thereby inhibiting BMP activity. In breast, lung and colon tumors, CHRDL2 expression is upregulated, suggesting a possible role in tumorigenesis.

Synonyms:

BNF1; CHL2

Protein Families:

Secreted Protein

Product images:

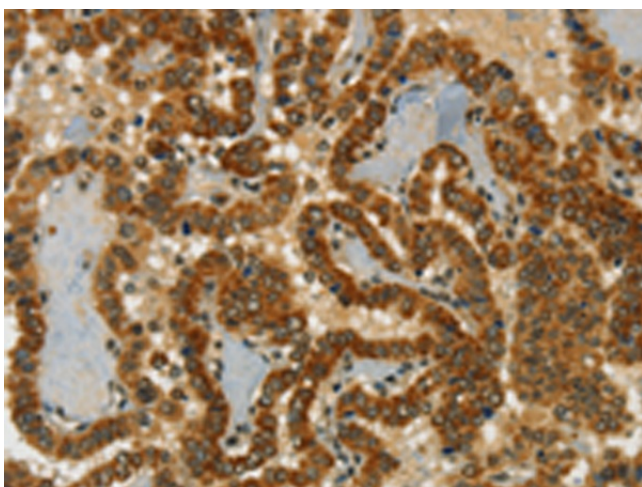
Gel: 8%SDS-PAGE

Lysate: 40 µg

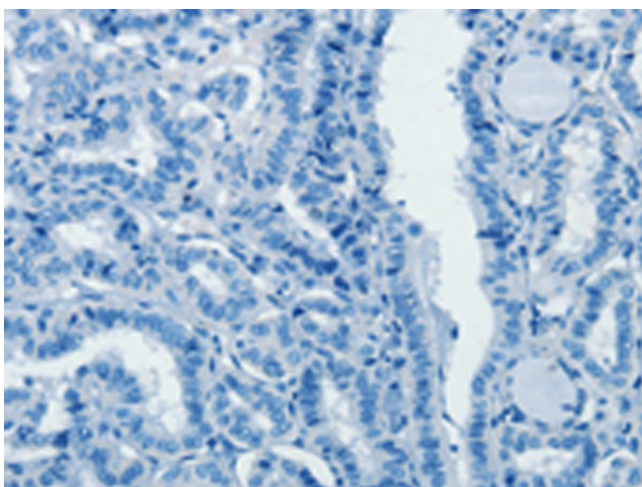
Lane: Human fetal brain tissue

Primary antibody: TA351076 (CHRDL2 Antibody)
at dilution 1/600Secondary antibody: Goat anti rabbit IgG at
1/8000 dilution

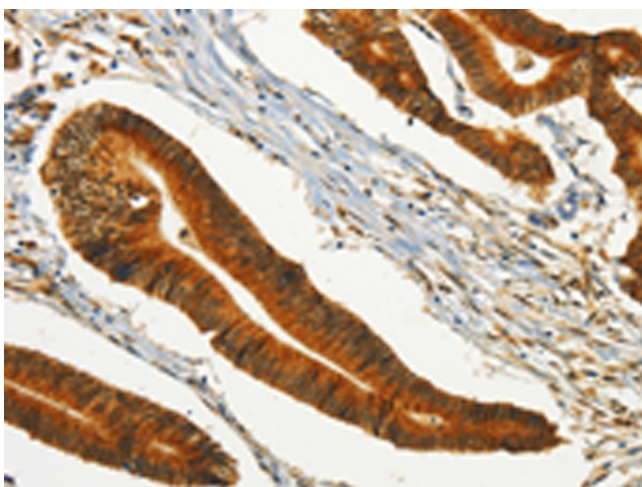
Exposure time: 1 minute



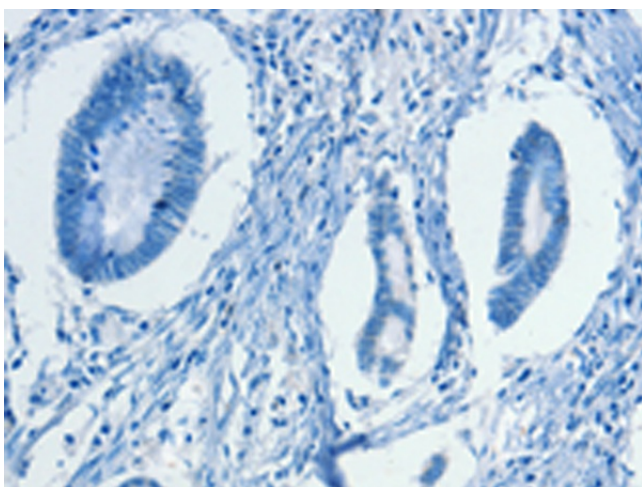
Immunohistochemistry of paraffin-embedded Human thyroid cancer tissue using TA351076 (CHRDL2 Antibody) at dilution 1/20 (Original magnification: $\times 200$)



Immunohistochemistry of paraffin-embedded Human thyroid cancer tissue using TA351076 (CHRDL2 Antibody) at dilution 1/20, treated with synthetic peptide. (Original magnification: $\times 200$)



Immunohistochemistry of paraffin-embedded Human colon cancer tissue using TA351076 (CHRDL2 Antibody) at dilution 1/20 (Original magnification: $\times 200$)



Immunohistochemistry of paraffin-embedded Human colon cancer tissue using TA351076 (CHRDL2 Antibody) at dilution 1/20, treated with synthetic peptide. (Original magnification: ×200)