

Product datasheet for **TA351075**

CERKL Rabbit Polyclonal Antibody

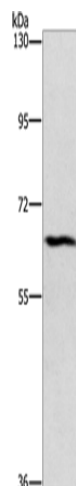
Product data:

Product Type:	Primary Antibodies
Applications:	WB
Recommended Dilution:	WB: 500-2000 WB positive control: Hela cells
Reactivity:	Human
Host:	Rabbit
Isotype:	IgG
Clonality:	Polyclonal
Immunogen:	Synthetic peptide of human CERKL
Formulation:	pH7.4 PBS, 0.05% NaN ₃ , 40% Glycerol
Concentration:	lot specific
Purification:	Antigen affinity purification
Conjugation:	Unconjugated
Storage:	Store at -20°C as received.
Stability:	Stable for 12 months from date of receipt.
Predicted Protein Size:	63 kDa
Gene Name:	ceramide kinase like
Database Link:	NP_001025482 Entrez Gene 375298 Human Q49MI3
Background:	This gene encodes a protein with ceramide kinase-like domains, however, the protein does not phosphorylate ceramide and its target substrate is currently unknown. This protein may be a negative regulator of apoptosis in photoreceptor cells. Mutations in this gene cause a form of retinitis pigmentosa characterized by autosomal recessive cone and rod dystrophy (arCRD).
Synonyms:	RP26
Protein Families:	Druggable Genome



[View online »](#)

Product images:



Gel: 6%SDS-PAGE

Lysate: 40 µg

Lane: HeLa cells

Primary antibody: TA351075 (CERKL Antibody) at dilution 1/1100

Secondary antibody: Goat anti rabbit IgG at 1/8000 dilution

Exposure time: 1 minute