

Product datasheet for **TA351073**

Centaurin gamma 1 (AGAP2) Rabbit Polyclonal Antibody

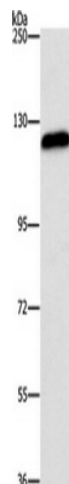
Product data:

Product Type:	Primary Antibodies
Applications:	IHC, WB
Recommended Dilution:	ELISA: 2000-5000, WB: 500-2000, IHC: 50-200
Reactivity:	Human
Host:	Rabbit
Isotype:	IgG
Clonality:	Polyclonal
Immunogen:	Synthetic peptide of human AGAP2
Formulation:	pH7.4 PBS, 0.05% NaN ₃ , 40% Glycerol
Concentration:	lot specific
Purification:	Antigen affinity purification
Conjugation:	Unconjugated
Storage:	Store at -20°C as received.
Stability:	Stable for 12 months from date of receipt.
Predicted Protein Size:	125 kDa
Gene Name:	ArfGAP with GTPase domain, ankyrin repeat and PH domain 2
Database Link:	NP_001116244 Entrez Gene 116986 Human Q99490
Background:	The protein encoded by this gene belongs to the centaurin gamma-like family. It mediates anti-apoptotic effects of nerve growth factor by activating nuclear phosphoinositide 3-kinase. It is overexpressed in cancer cells, and promotes cancer cell invasion. Alternatively spliced transcript variants encoding different isoforms have been described for this gene.
Synonyms:	CENTG1; GGAP2; PIKE
Protein Pathways:	Endocytosis

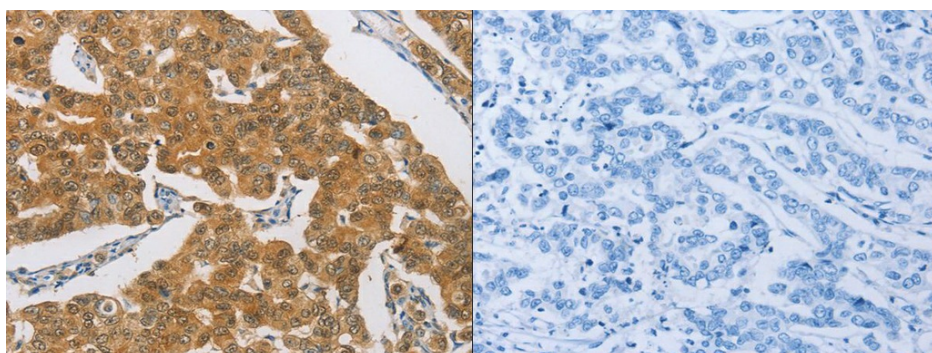


[View online »](#)

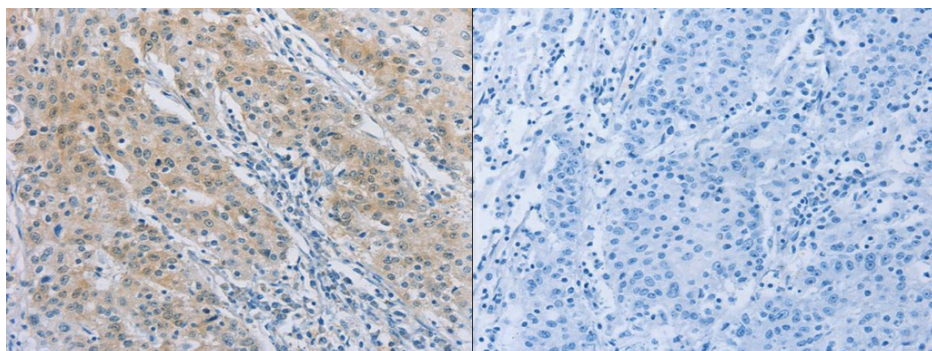
Product images:



Gel: 6%SDS-PAGE, Lysate: 40 ug, Lane: Hela cells, Primary antibody: (AGAP2 Antibody) at dilution 1/700, Secondary antibody: Goat anti rabbit IgG at 1/8000 dilution, Exposure time: 40 seconds



The image on the left is immunohistochemistry of paraffin-embedded Human breast cancer tissue using (AGAP2 Antibody) at dilution 1/30, on the right is treated with synthetic peptide. (Original magnification: ×200)



The image on the left is immunohistochemistry of paraffin-embedded Human gastric cancer tissue using (AGAP2 Antibody) at dilution 1/30, on the right is treated with synthetic peptide. (Original magnification: ×200)