

## Product datasheet for **TA351066S**

### NUF2 Rabbit Polyclonal Antibody

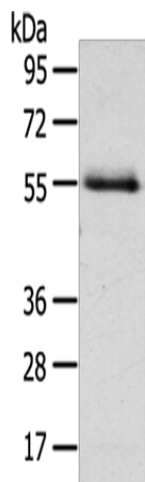
#### Product data:

|                         |  |
|-------------------------|--|
| Product Type:           | Primary Antibodies   |
| Applications:           | WB   |
| Recommended Dilution:   | WB: 200-1000<br>WB positive control: Human normal liver tissue   |
| Reactivity:             | Human  |
| Host:                   | Rabbit   |
| Isotype:                | IgG  |
| Clonality:              | Polyclonal   |
| Immunogen:              | Synthetic peptide of human NUF2  |
| Formulation:            | pH7.4 PBS, 0.05% NaN <sub>3</sub> , 40% Glycerol   |
| Purification:           | Antigen affinity purification  |
| Conjugation:            | Unconjugated   |
| Storage:                | Store at -20°C as received.  |
| Stability:              | Stable for 12 months from date of receipt.   |
| Predicted Protein Size: | 54 kDa   |
| Gene Name:              | NUF2, NDC80 kinetochore complex component  |
| Database Link:          | <a href="#">NP_663735</a><br><a href="#">Entrez Gene 83540 Human</a><br><a href="#">Q9BZD4</a>   |
| Background:             | This gene encodes a protein that is highly similar to yeast Nuf2, a component of a conserved protein complex associated with the centromere. Yeast Nuf2 disappears from the centromere during meiotic prophase when centromeres lose their connection to the spindle pole body, and plays a regulatory role in chromosome segregation. |
| Synonyms:               | CDCA1; CT106; NUF2R  |
| Protein Families:       | Druggable Genome   |



[View online »](#)

## Product images:



Gel: 8%SDS-PAGE  
Lysate: 40  $\mu$ g  
Lane: Human normal liver tissue  
Primary antibody: [TA351066] (NUF2 Antibody) at dilution 1/200  
Secondary antibody: Goat anti rabbit IgG at 1/8000 dilution  
Exposure time: 1 minute