

Product datasheet for **TA351064S**

CDC34 Rabbit Polyclonal Antibody

Product data:

Product Type:	Primary Antibodies
Applications:	IHC, WB
Recommended Dilution:	WB: 500-2000 WB positive control: Hela and A431 cells IHC: 100-300 Positive control: Human Lymphoma Predicted cell location: Cytoplasm
Reactivity:	Human, Mouse
Host:	Rabbit
Isotype:	IgG
Clonality:	Polyclonal
Immunogen:	Synthetic peptide of human CDC34
Formulation:	pH7.4 PBS, 0.05% NaN ₃ , 40% Glycerol
Purification:	Antigen affinity purification
Conjugation:	Unconjugated
Storage:	Store at -20°C as received.
Stability:	Stable for 12 months from date of receipt.
Predicted Protein Size:	27 kDa
Gene Name:	cell division cycle 34
Database Link:	NP_004350 Entrez Gene 216150 Mouse Entrez Gene 997 Human P49427
Background:	The protein encoded by this gene is a member of the ubiquitin-conjugating enzyme family. Ubiquitin-conjugating enzyme catalyzes the covalent attachment of ubiquitin to other proteins. This protein is a part of the large multiprotein complex, which is required for ubiquitin-mediated degradation of cell cycle G1 regulators, and for the initiation of DNA replication.
Synonyms:	E2-CDC34; UBC3; UBCH3; UBE2R1



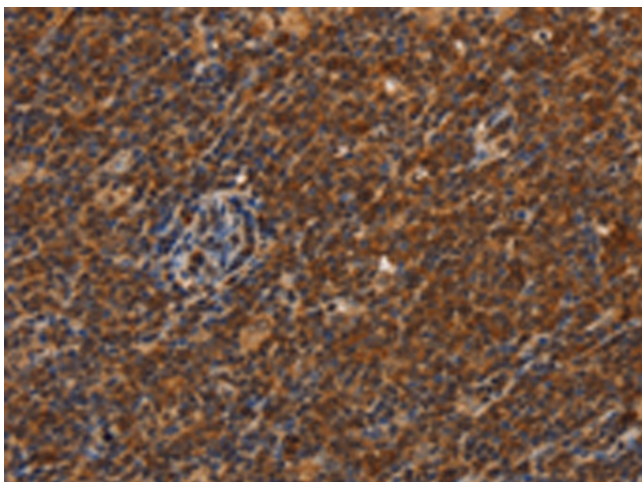
[View online »](#)

Protein Pathways: Ubiquitin mediated proteolysis

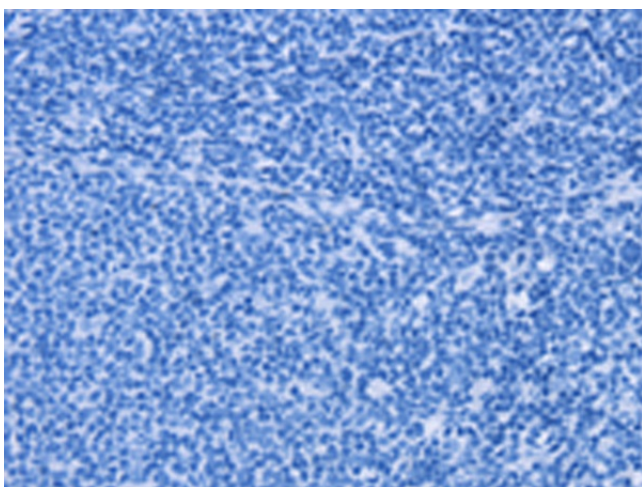
Product images:



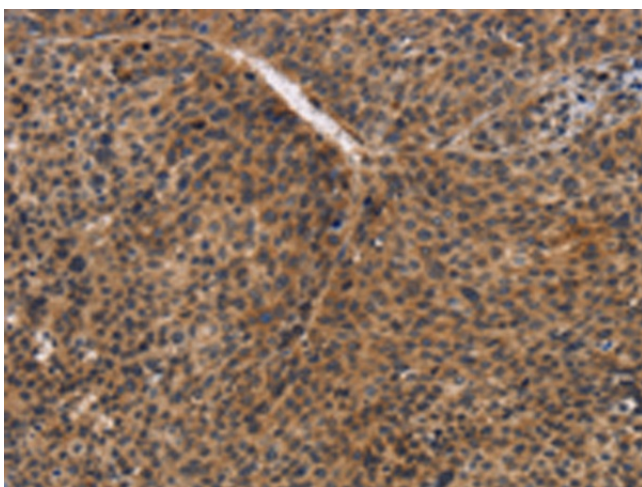
Gel: 15%SDS-PAGE
Lysate: 40 µg
Lane 1-2: HeLa cells
A431 cells
Primary antibody: [TA351064] (CDC34 Antibody)
at dilution 1/900
Secondary antibody: Goat anti rabbit IgG at
1/8000 dilution
Exposure time: 1 minute



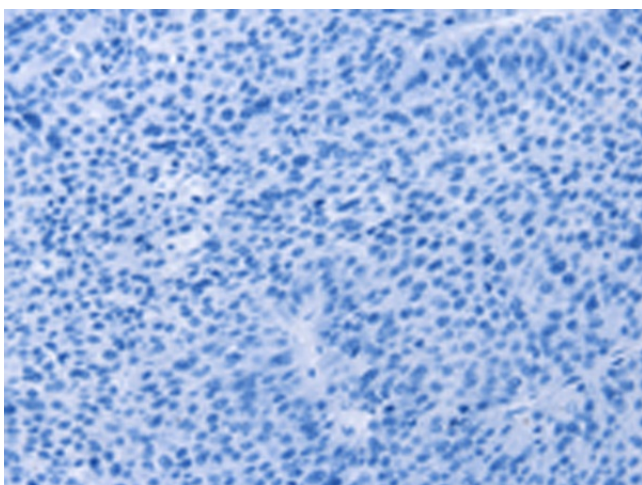
Immunohistochemistry of paraffin-embedded
Human Lymphoma tissue using [TA351064]
(CDC34 Antibody) at dilution 1/50 (Original
magnification: ×200)



Immunohistochemistry of paraffin-embedded Human Lymphoma tissue using [TA351064] (CDC34 Antibody) at dilution 1/50, treated with synthetic peptide. (Original magnification: $\times 200$)



Immunohistochemistry of paraffin-embedded Human liver cancer tissue using [TA351064] (CDC34 Antibody) at dilution 1/50 (Original magnification: $\times 200$)



Immunohistochemistry of paraffin-embedded Human liver cancer tissue using [TA351064] (CDC34 Antibody) at dilution 1/50, treated with synthetic peptide. (Original magnification: $\times 200$)