

## Product datasheet for **TA351064**

### CDC34 Rabbit Polyclonal Antibody

#### Product data:

Product Type:	Primary Antibodies
Applications:	IHC, WB
Recommended Dilution:	WB: 500-2000 WB positive control: Hela and A431 cells IHC: 100-300 Positive control: Human Lymphoma Predicted cell location: Cytoplasm
Reactivity:	Human, Mouse
Host:	Rabbit
Isotype:	IgG
Clonality:	Polyclonal
Immunogen:	Synthetic peptide of human CDC34
Formulation:	pH7.4 PBS, 0.05% NaN <sub>3</sub> , 40% Glycerol
Concentration:	lot specific
Purification:	Antigen affinity purification
Conjugation:	Unconjugated
Storage:	Store at -20°C as received.
Stability:	Stable for 12 months from date of receipt.
Predicted Protein Size:	27 kDa
Gene Name:	cell division cycle 34
Database Link:	<a href="#">NP_004350</a> <a href="#">Entrez Gene 216150 Mouse</a> <a href="#">Entrez Gene 997 Human</a> <a href="#">P49427</a>

**Background:** The protein encoded by this gene is a member of the ubiquitin-conjugating enzyme family. Ubiquitin-conjugating enzyme catalyzes the covalent attachment of ubiquitin to other proteins. This protein is a part of the large multiprotein complex, which is required for ubiquitin-mediated degradation of cell cycle G1 regulators, and for the initiation of DNA replication.



[View online »](#)

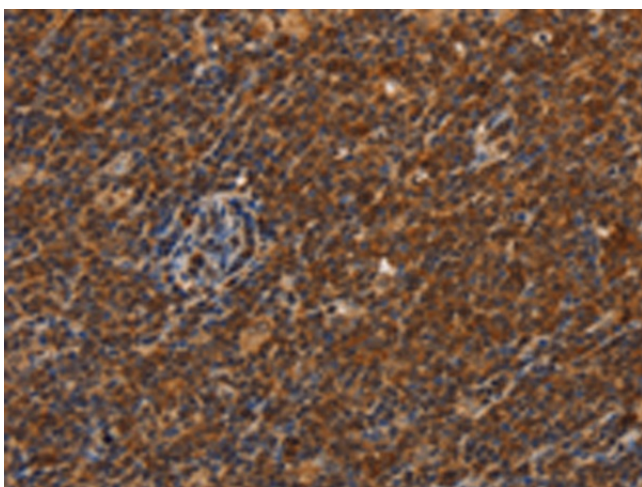
**Synonyms:** E2-CDC34; UBC3; UBCH3; UBE2R1

**Protein Pathways:** Ubiquitin mediated proteolysis

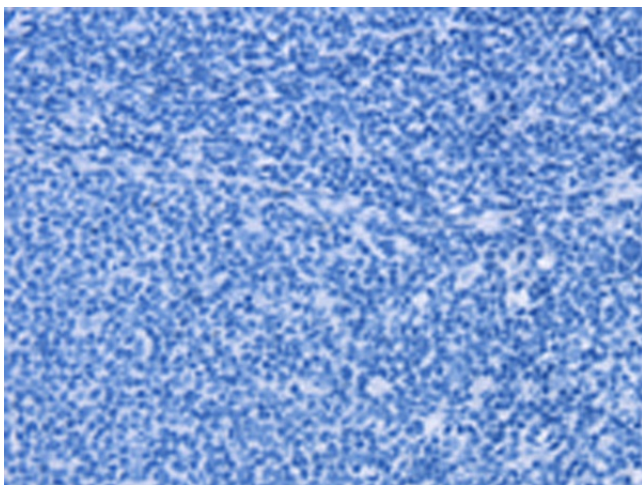
**Product images:**



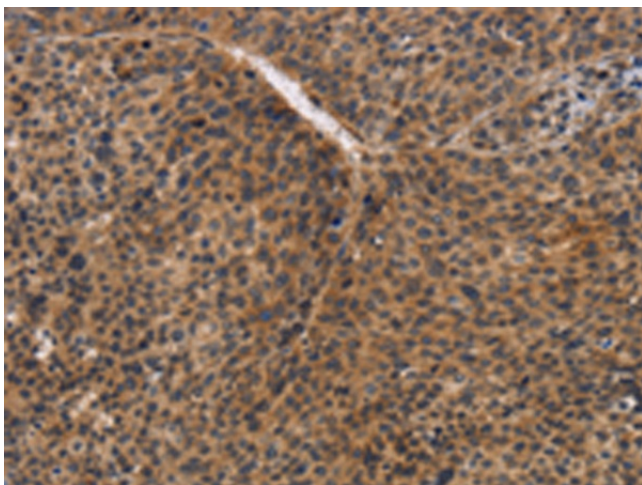
Gel: 15%SDS-PAGE  
Lysate: 40  $\mu$ g  
Lane 1-2: HeLa cells  
A431 cells  
Primary antibody: TA351064 (CDC34 Antibody) at dilution 1/900  
Secondary antibody: Goat anti rabbit IgG at 1/8000 dilution  
Exposure time: 1 minute



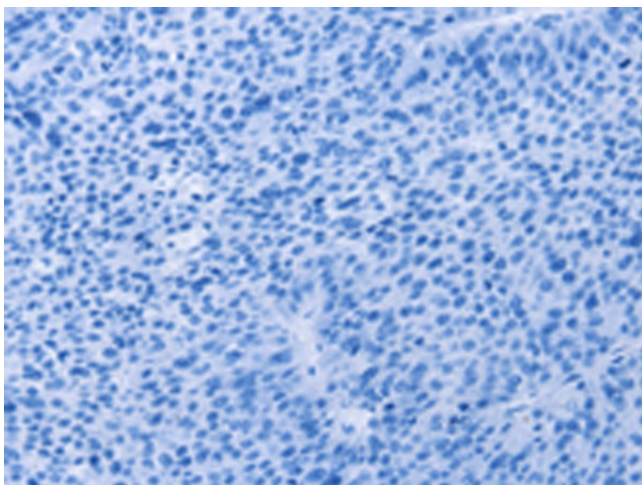
Immunohistochemistry of paraffin-embedded Human Lymphoma tissue using TA351064 (CDC34 Antibody) at dilution 1/50 (Original magnification:  $\times$ 200)



Immunohistochemistry of paraffin-embedded Human Lymphoma tissue using TA351064 (CDC34 Antibody) at dilution 1/50, treated with synthetic peptide. (Original magnification:  $\times 200$ )



Immunohistochemistry of paraffin-embedded Human liver cancer tissue using TA351064 (CDC34 Antibody) at dilution 1/50 (Original magnification:  $\times 200$ )



Immunohistochemistry of paraffin-embedded Human liver cancer tissue using TA351064 (CDC34 Antibody) at dilution 1/50, treated with synthetic peptide. (Original magnification:  $\times 200$ )