

## Product datasheet for **TA351063S**

### CDC2L6 (CDK19) Rabbit Polyclonal Antibody

#### Product data:

Product Type:	Primary Antibodies
Applications:	IHC, WB
Recommended Dilution:	WB: 500-2000 WB positive control: Mouse eye tissue lysate IHC: 50-200 Positive control: Human esophagus cancer Predicted cell location: Cytoplasm
Reactivity:	Human, Mouse
Host:	Rabbit
Isotype:	IgG
Clonality:	Polyclonal
Immunogen:	Synthetic peptide of human CDK19
Formulation:	pH7.4 PBS, 0.05% NaN <sub>3</sub> , 40% Glycerol
Purification:	Antigen affinity purification
Conjugation:	Unconjugated
Storage:	Store at -20°C as received.
Stability:	Stable for 12 months from date of receipt.
Predicted Protein Size:	57 kDa
Gene Name:	cyclin-dependent kinase 19
Database Link:	<a href="#">NP_001287889</a> <a href="#">Entrez Gene 78334 Mouse</a> <a href="#">Entrez Gene 23097 Human</a> <a href="#">Q9BWU1</a>
Background:	This gene encodes a protein that is one of the components of the Mediator coactivator complex. The Mediator complex is a multiprotein complex required for transcriptional activation by DNA binding transcription factors of genes transcribed by RNA polymerase II. The protein encoded by this gene is similar to cyclin-dependent kinase 8 which can also be a component of the Mediator complex.
Synonyms:	bA346C16.3; CDC2L6; CDK11



[View online »](#)

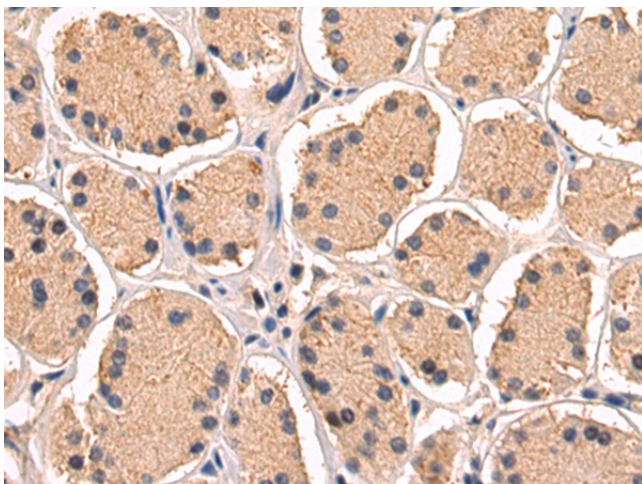
Protein Families: Druggable Genome, Protein Kinase

### Product images:

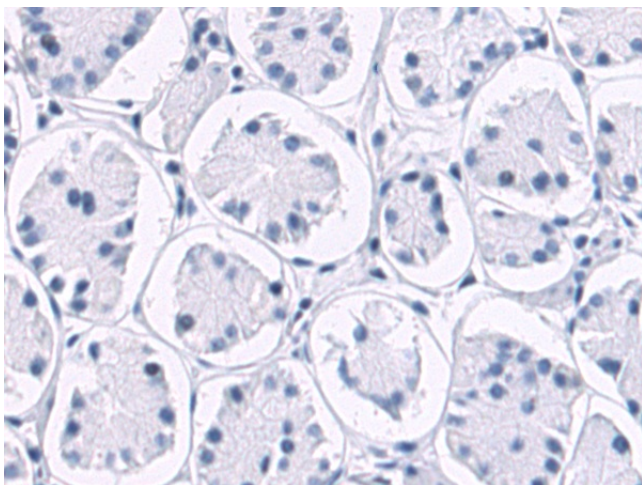
kDa  
130—  
95—  
72—  
55—  
36—  
28—  
17—



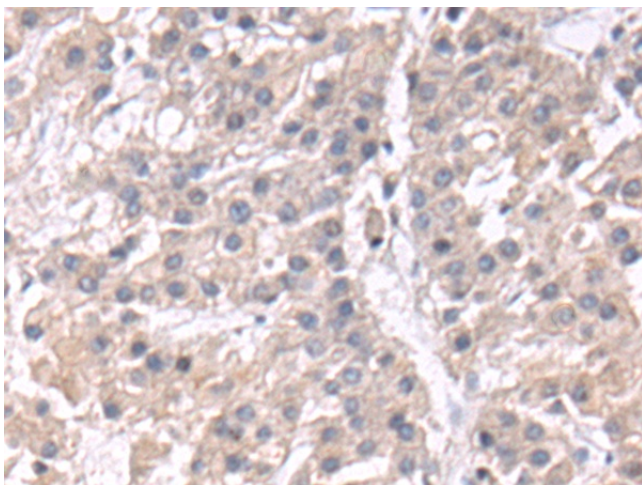
Gel: 8%SDS-PAGE  
Lysate: 40  $\mu$ g  
Lane: Mouse eye tissue lysate  
Primary antibody: [TA351063] (CDK19 Antibody) at dilution 1/800  
Secondary antibody: Goat anti rabbit IgG at 1/5000 dilution  
Exposure time: 3 minutes



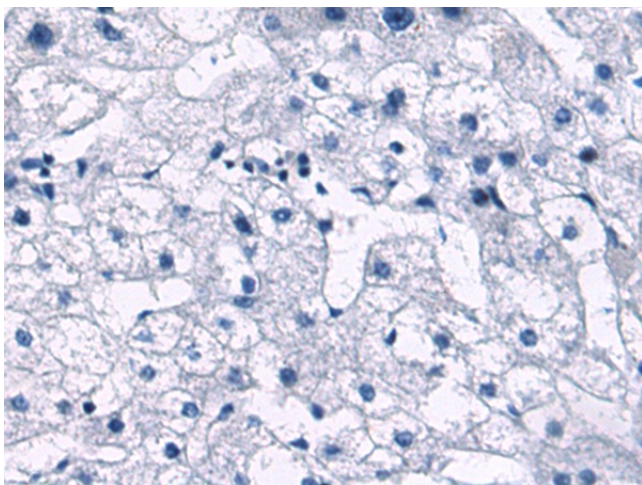
Immunohistochemistry of paraffin-embedded Human esophagus cancer tissue using [TA351063] (CDK19 Antibody) at dilution 1/50 (Original magnification:  $\times$ 200)



Immunohistochemistry of paraffin-embedded Human esophagus cancer tissue using [TA351063] (CDK19 Antibody) at dilution 1/50, treated with synthetic peptide. (Original magnification: ×200)



Immunohistochemistry of paraffin-embedded Human liver cancer tissue using [TA351063] (CDK19 Antibody) at dilution 1/50 (Original magnification: ×200)



Immunohistochemistry of paraffin-embedded Human liver cancer tissue using [TA351063] (CDK19 Antibody) at dilution 1/50, treated with synthetic peptide. (Original magnification: ×200)