

Product datasheet for **TA351061S**

CDC27 Rabbit Polyclonal Antibody

Product data:

Product Type:	Primary Antibodies
Applications:	IHC, WB
Recommended Dilution:	WB: 500-2000 WB positive control: HepG2 and K562 cells IHC: 25-100 Positive control: Human lung cancer Predicted cell location: Cytoplasm
Reactivity:	Human, Mouse, Rat
Host:	Rabbit
Isotype:	IgG
Clonality:	Polyclonal
Immunogen:	Synthetic peptide of human CDC27
Formulation:	pH7.4 PBS, 0.05% NaN ₃ , 40% Glycerol
Purification:	Antigen affinity purification
Conjugation:	Unconjugated
Storage:	Store at -20°C as received.
Stability:	Stable for 12 months from date of receipt.
Predicted Protein Size:	92 kDa
Gene Name:	cell division cycle 27
Database Link:	NP_001247 Entrez Gene 217232 MouseEntrez Gene 360643 RatEntrez Gene 996 Human P30260



[View online »](#)

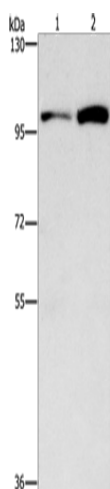
Background: The protein encoded by this gene shares strong similarity with *Saccharomyces cerevisiae* protein Cdc27, and the gene product of *Schizosaccharomyces pombe* nuc 2. This protein is a component of anaphase-promoting complex (APC), which is composed of eight protein subunits and highly conserved in eucaryotic cells. APC catalyzes the formation of cyclin B-ubiquitin conjugate that is responsible for the ubiquitin-mediated proteolysis of B-type cyclins. This protein and 3 other members of the APC complex contain the TPR (tetratricopeptide repeat), a protein domain important for protein-protein interaction.

Synonyms: ANAPC3; APC3; CDC27Hs; D0S1430E; D17S978E; H-NUC; HNUC; NUC2

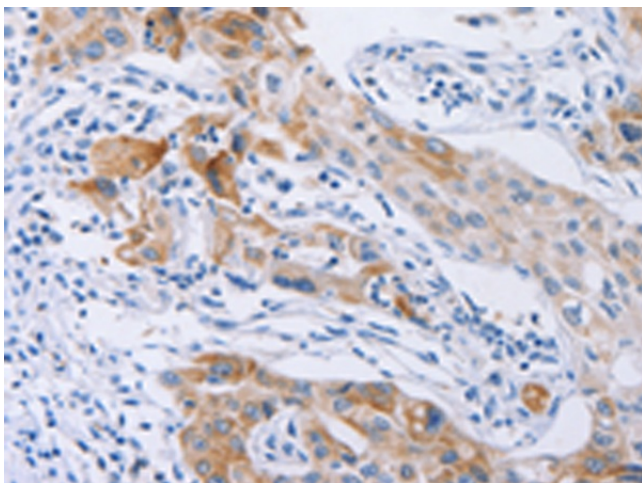
Protein Families: Druggable Genome

Protein Pathways: Cell cycle, Oocyte meiosis, Progesterone-mediated oocyte maturation, Ubiquitin mediated proteolysis

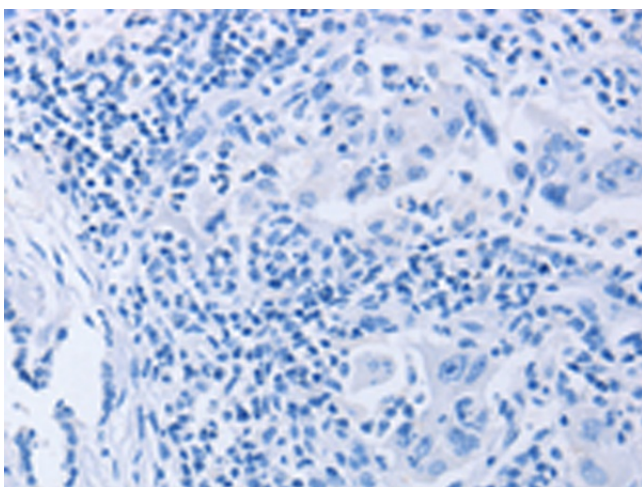
Product images:



Gel: 6%SDS-PAGE
Lysate: 40 µg
Lane 1-2: HepG2 cells
K562 cells
Primary antibody: [TA351061] (CDC27 Antibody)
at dilution 1/750
Secondary antibody: Goat anti rabbit IgG at
1/8000 dilution
Exposure time: 5 seconds



Immunohistochemistry of paraffin-embedded
Human lung cancer tissue using [TA351061]
(CDC27 Antibody) at dilution 1/40 (Original
magnification: ×200)



Immunohistochemistry of paraffin-embedded Human lung cancer tissue using [TA351061] (CDC27 Antibody) at dilution 1/40, treated with synthetic peptide. (Original magnification: ×200)